



Esri Chest Webinar

October 2025

Addy Pope & Sam Yates



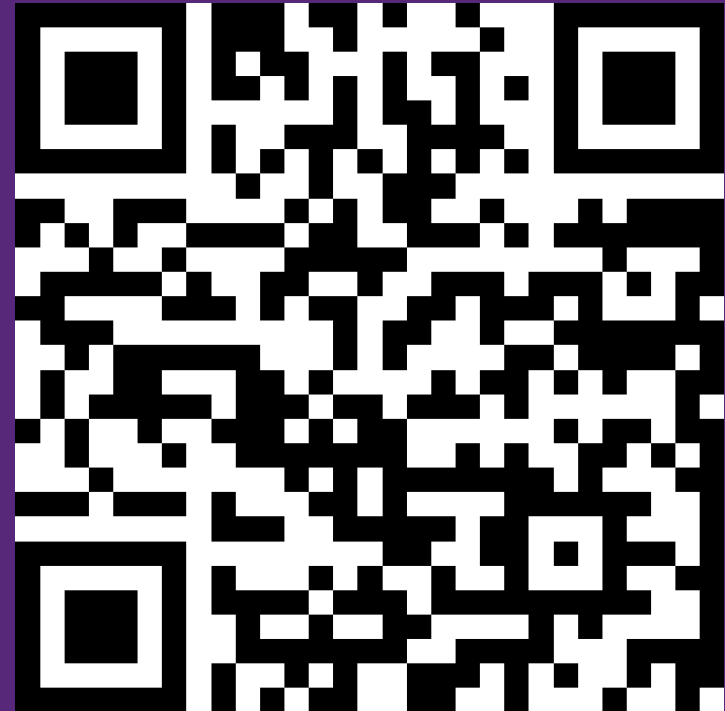
Agenda

- Changes to the Education Site License for the next agreement
- What's new in ArcGIS
- Continual Professional Development for Lecturers
- Cadence of these webinars
- Questions



Questions

- Questions can be asked through SLIDO.
- www.slido.com
- Scan the QR Code → → → → → → →
- Code: **#esri2110**
- We will work through the questions at the end.
- Upvote other people's questions – we will go through them in order of popularity.



An abstract geometric pattern on a dark purple background. The pattern consists of various shapes in shades of purple, yellow, and green. These include squares, circles, and rings. Some shapes contain internal details, such as a globe icon in a yellow square, a person wearing a VR headset in a yellow square, and a four-pointed star in a yellow square. The shapes are arranged in a non-repeating, scattered manner across the entire image.

Who, what, when?

WHO:

- Higher education customers

• WHAT:

- Education Institution Agreements (single, multi-campus)
- Department licenses

• WHEN:

- Current agreement ends: July 31st 2026
- New Agreement to run: 1st August 2026 → 31st July 2029

What will not be there in 2026

ArcMap

- No provision of ArcMap

- **ESU/EFL Codes**

- No EFL/ESU codes in your accounts – these have been there for most through this agreement beyond the stated termination date of 31st July 2024
- Named User licenses only

- **Except:**

- Solution for true Air-Gap deployment environments
- On request only and use case will be reviewed by Esri Inc

New Allocations for Academic Use

	Large	Medium	Small
Professional Plus users	15,000	5,000	2,500
Viewer Users	unlimited	unlimited	unlimited
Credits	1,000,000	500,000	250,000
Additional products	Online apps, Hub Premium, Pro extensions, Enterprise Additional Capability Servers, ArcGIS Monitor, ArcGIS All Source, ArcGIS Drone2Map Standard		

Site license size will be determined by institutions Jisc band



New Allocations for Department License


	Dept
Professional Plus users	50
Viewer Users	-
Credits	12,500
Additional products	Online apps, Pro extensions



New Allocations for Administrative Use

	Large	Medium	Small
Professional Plus users	20	10	5
Mobile User	100	50	20
Viewer Users	unlimited	unlimited	unlimited
Credits	35,000	17,500	7,500
Additional products	Online apps, Hub Premium, Pro extensions, Enterprise Additional Capability Servers, ArcGIS Monitor, ArcGIS All Source, ArcGIS Drone2Map Standard		





Implications & Considerations

Less Credits

With fewer credits we need to think about spring cleaning our ArcGIS Online accounts.

Initial analysis of credit consumption shows that:

- Analysis = 20%
- Storage = 80%
 - 80% of storage credit use may be for legacy data of users who are inactive

Credit Use

ArcGIS Online Credit Consumption

Data current as of:
Oct 19 2025 8:03AM



Subscription for:

SMS ID	Subscription Type	Subscription Status	Term Start	Term End	Consumed Credits	Available Credits	Total Given Credits	Admin Email	New/Renewal	Last Login Date
4081180647	Education Site License	active	8/1/2023	7/31/2026	66,967.66	1849013.6000000000000	2,000,000.00		Renew	10/17/2025

Credits Consumed by Year and Month

Year ● 2023 ● 2024 ● 2025



12 months credit use

Service Group/ Service Name	10/31/2024	11/30/2024	12/31/2024	1/31/2025	2/28/2025	3/31/2025	4/30/2025	5/31/2025	6/30/2025	7/31/2025	8/31/2025	9/30/2025	Total
⊕ Data Storage	2,381.09	2,390.24	2,428.37	2,441.28	2,447.52	2,469.54	2,493.32	2,515.09	2,514.58	2,518.17	2,522.87	2,516.10	29,638.18
⊕ Demographics	0.17		0.53			0.14							0.84
⊕ Feature Services	54,197.77	57,153.85	49,380.26	51,984.42	53,888.34	54,690.98	55,488.60	55,943.85	56,087.87	56,485.16	56,258.48	56,252.63	657,812.20
⊖ Geocoding													
Geocoding - Stored		1.40	1.72		0.64			0.04	0.08			0.56	4.44
⊕ GeoEnrichment	0.03	10.27	0.09		155.73	17.37	0.02	0.04	0.01		0.03	0.01	183.60
⊖ Imagery													
Image Analysis - Summarize Raster Within		1.00											1.00
Imagery Storage - Image Count	299.60	299.16	300.00	300.02	299.53	300.01	299.99	300.01	298.74	300.00	300.01	299.16	3,596.23
⊕ ModelBuilder										25.83			25.83
⊕ Network Analysis	0.57	0.10	0.08	50.02		19.62	0.02	0.01	0.01		0.18		70.60
⊕ Notebooks	0.07	0.07	0.07	0.07	0.07	5.07	0.07	0.07	0.07	0.07	0.07	0.07	5.85
⊕ Scene Services			0.00				0.03						0.03
⊕ Spatial Analysis	0.00	30.51	0.01	45.97	0.00	5.90	0.02	0.02	249.14	0.26		0.25	332.08
⊖ Tile Services													
Tiles Generated	25.04	113.75	96.56	701.65	0.41	0.90	38.07	0.56		7.20	18.68	0.26	1,003.10

Feature Storage

esri ArcGIS Online Credit Consumption

Data current as of:
Oct 19 2025 8:03AM

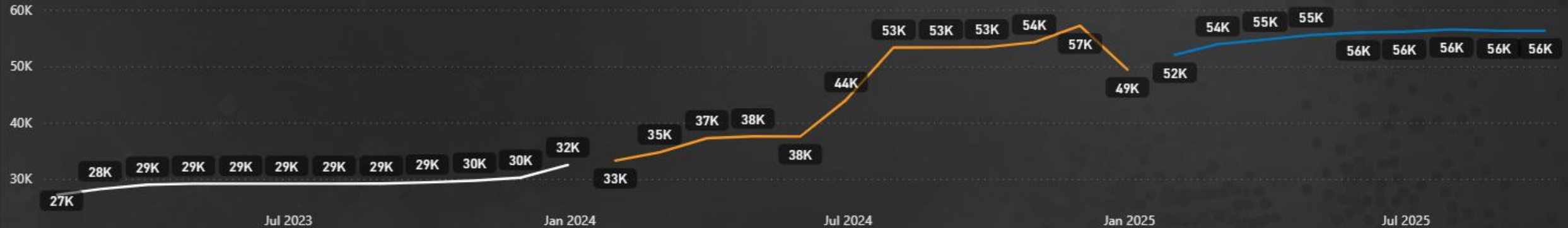


Subscription for:

SMS ID	Subscription Type	Subscription Status	Term Start	Term End	Consumed Credits	Available Credits	Total Given Credits	Admin Email	New/Renewal	Last Login Date
4081180647	Education Site License	active	8/1/2023	7/31/2026	66,967.66	1849013.600000000000	2,000,000.00		Renew	10/17/2025

Credits Consumed by Year and Month

Year ● 2023 ● 2024 ● 2025



Service Group/ Service Name	1/31/2023	2/28/2023	3/31/2023	4/30/2023	5/31/2023	6/30/2023	7/31/2023	8/31/2023	9/30/2023	10/31/2023	11/30/2023	12/31/2023
Feature Services	27,162.34	28,177.64	28,968.87	29,143.55	29,148.84	29,149.61	29,155.88	29,158.19	29,370.71	29,690.62	30,206.23	32,450.00

Data Storage

esri ArcGIS Online Credit Consumption

Data current as of:
Oct 19 2025 8:03AM

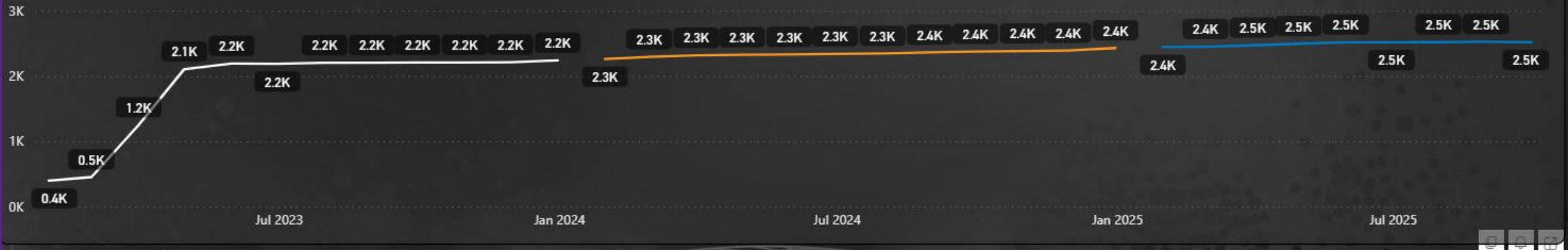


Subscription for:

SMS ID	Subscription Type	Subscription Status	Term Start	Term End	Consumed Credits	Available Credits	Total Given Credits	Admin Email	New/Renewal	Last Login Date
4081180647	Education Site License	active	8/1/2023	7/31/2026	66,967.66	1849013.600000000000	2,000,000.00		Renew	10/17/2025

Credits Consumed by Year and Month


Year ● 2023 ● 2024 ● 2025



Service Group/ Service Name	1/31/2023	2/28/2023	3/31/2023	4/30/2023	5/31/2023	6/30/2023	7/31/2023	8/31/2023	9/30/2023	10/31/2023	11/30/2023	12/31/2023
Data Storage	396.38	450.29	1,249.32	2,105.08	2,189.35	2,185.62	2,201.72	2,202.87	2,206.04	2,206.69	2,209.68	2,231.00

Managing credits

Prototype



AGOL Trawler *(Experience Builder Edition)*

Use the tools on the left to perform tasks.
Each tool creates an output table, click the tool output and add it to the table to inspect.
Use delete tools to remove users and items.

Tools	History
Get_Organisation_User_Information >	
Search_a_Users_Content >	
Delete_User >	
Item_Search >	
Delete_Item >	
Tag_Users >	
Input_BUG >	

Useful tools for our sector

Managing credits



AGOL Trawler (Experience Builder Edition)

Use the tools on the left to perform tasks.
Each tool creates an output table, click the tool output and add it to the table to inspect.
Use delete tools to remove users and items.

Tools

History

← Search_a_Users_Content

Messages

Start time: Oct 21, 2025, 11:06:46 AM GMT+1
Warning: [10/21/2025 10:06:59 AM] You are logged on as apope@esriuk.com_EsriUkeducation with an administrator role, proceed with caution.
Completed: Oct 21, 2025, 11:24:25 AM GMT+1
Elapsed time: 17 min 38 sec

Result

Users_Content

Parameters

Userapope@esriuk.com_EsriUkeducation

Only show private contentTrue

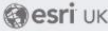
Users_Content

ID	Name	Size	Type	Credits	Carbon	Created
146c43f272b34a899bc2b...	DonifordMeanders_30mD...	50.79 Mb	Image Service	0.06	968.71g	10 Oct 2025
e9a6196a85d34c6a8b680...	Modern GIS	50.72 Mb	StoryMap	0.06	967.42g	23 Feb 2024
4e198841232b4682929b...	Northam_NorthamOvervi...	503.34 Mb	Compact Tile Package	0.56	9600.5g	14 Jan 2025
dc134b678d734faaabf5...	Signpost survey	0.51 Mb	Feature Service	0	9.68g	10 Dec 2024
f9265386eb25447daafea...	Travel30AiirportEnrichedAP	0.5 Mb	Feature Service	0	9.53g	17 Jan 2024
0c839933cfca4cf88abfdf6...	Data Science beyond aca...	46.88 Mb	StoryMap	0.05	894.14g	23 Aug 2023
82eebacd204144a78e8fd...	2023 Licence Renewal	45.7 Mb	Hub Page	0.05	871.71g	25 Mar 2025
b716bae33bbf4c0dbea77...	New Airport for London	4.54 Mb	StoryMap	0.01	86.62g	17 Jan 2024
5df8345d7d0b4c04b0d2...	HigherEducation_Webina...	4.47 Mb	PDF	0	85.24g	18 Dec 2023
3cd4a73cc51c49c986f9d...	Northam_Flight3_DSMhill...	438.27 Mb	Compact Tile Package	0.49	8359.35g	14 Jan 2025
dae6a664e9e24fc0ba4b0...	(Copy) 2023 - Where is th...	43.66 Mb	StoryMap	0.05	832.72g	06 Dec 2023
e851be6ca65b4cb9943e...	ArcGIS Developers 101	43.57 Mb	StoryMap	0.05	831.05g	10 Oct 2025
1f739ffa76b94975a0b355...	Modern GIS for Higher Ed...	4.37 Mb	StoryMap	0	83.44g	06 Nov 2023
cadf881ac9d24a02a64dd...	Northam_Flight2_DSMhill...	432.91 Mb	Compact Tile Package	0.48	8257.01g	13 Jan 2025
87a315f295c8462d9510b...	DonifordMeanders_30mD...	42.13 Mb	Compact Tile Package	0.05	803.62g	10 Oct 2025

A decorative graphic on the left side of the slide, set against a purple background with a faint map pattern. It includes several icons: a yellow square with a green globe and circular arrows, a purple circle with a green center, a purple square with three stacked white diamonds, a purple square with a white globe grid, a yellow square with a green person wearing a VR headset, and various other geometric shapes like circles, squares, and a striped square in yellow and green.

What's new in ArcGIS?

GIST



GIST News



Welcome to your monthly newsletter, GIST News. In this issue, you will discover recent updates to ArcGIS Field Maps, an intriguing case study about the Woodland Trust, information about a new training course and more news from Esri UK.

FEATURED WEBINAR

Thinking spatially - unlocking the power of spatial analysis in ArcGIS

Thursday 23rd October | 11:00 AM (BST)

[Register today →](#)



Join our events

WEBINAR

Natural Capital: mapping the value of nature

21st October 10:00 AM (BST)

In the face of a global climate challenge, the intricate connections between ecosystems and economies have never been more apparent. In this webinar, as part of Virtual GEOBusiness, our live panel of customer experts will explore how GIS can be transformative to your Natural Capital strategy.


[Register →](#)



IN-PERSON

Esri UK Welsh Conference

11th November 2025, The Parkgate Hotel, Cardiff

The agenda is live for the Esri UK Welsh Conference. Join us for expert talks, Welsh success stories from RSPB Cymru, Keep Wales



[Products](#) [Solutions](#) [Support & Services](#) [Resources](#) [About](#) 


GIST

Overview

Your way to keep up-to-date with news from across Esri UK and the ArcGIS system

ArcGIS is continually evolving to offer exciting new functionality. With so many product updates and features to explore, we want to help you to get the gist of everything on offer. Every month we run a webinar, called GIST Live, in which we provide a demonstration of Esri's GIS technology and shine a light on a different capability of ArcGIS. To complement this, we also publish a monthly newsletter, GIST News, which highlights upcoming events, technical updates and more.

[Sign up to get the GIST →](#)



Stay up-to-date on news

Delivered by email, GIST News will keep you informed about ArcGIS product updates and new geospatial content. You will find information about future events, the topics for the next GIST Live webinar and descriptions of upcoming ArcGIS training courses. There are lots of links to further information, so you can explore the areas you are interested in and stay informed.

[Sign up to get the GIST →](#)

Webinars



In-Person Events



Industry Webinars



Technology Webinars

Brush up your GIS skills and discover the latest ArcGIS capabilities by watching our technology webinars, including GIST Live and partner technology demos.



GIST Live

UPCOMING: THUR 23 OCT, 2025 11:00

Thinking spatially - unlocking the power of spatial analysis in ArcGIS

How good is your spatial thinking when carrying out analysis? See how the element of location can reveal insights that traditional analysis might miss. Our technical experts will share hints and tips as they demonstrate the spatial analysis possibilities in Map Viewer and ArcGIS Pro. Join this webinar to start thinking and solving - spatially.



GIST Live

Say hello to AI assistants: a helping hand in ArcGIS

AI is now a familiar part of ArcGIS being used in everyday tasks. This webinar showcases how to utilise and work with AI assistants to streamline tasks like building forms in ArcGIS Survey123, building Arcade expressions in Map Viewer, exploring documentation, and more. See what AI assistants are available to try now and find out what's to come.



GIST Live

Maps to models: Uncover the 3D and indoor capabilities of ArcGIS

Did you know you can create 3D data from 2D features? This webinar steps through the 3D capabilities available with Scene Viewer and ArcGIS Urban. Also see how you can level up your indoor space management and operations. From managing existing floorplans to planning future developments, discover what's possible in ArcGIS.



esri UK

Products ▾

Solutions ▾

Support & Services ▾

Resources ▾

About ▾



Welsh Conference

Overview

About ▾

Registration

Esri UK Welsh Conference

11 November 2025 | The Parkgate Hotel, Cardiff


Registration is open

Join us and fellow GIS professionals to discover the very best in Welsh geospatial innovation, gain new insight, share best practices and learn about the latest in GIS technology. The day provides a unique opportunity to mix and network with the Welsh GIS community and meet Esri experts as we delve into this years theme 'GIS – Uniting our World'.

Register now →

View Agenda →

ArcGIS Blog

 Products ▾ Industries ▾ Support & Services ▾ Stories ▾ About ▾

ArcGIS Blog

OverviewTopicsSearch ArcGIS Blog


ArcGIS Blog

Search ArcGIS Blog

Pro tip: start your search with # to search with tags, or @ for authors.

Browse Topics

[ArcGIS Enterprise](#) [ArcGIS Location Platform](#) [ArcGIS Online](#) [ArcGIS Pro](#) [Browse all topics](#)



Meet the Judges
2025
ArcGIS StoryMaps
Competition

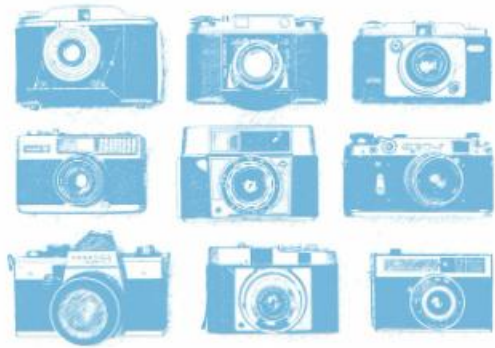
Oct 16, 2025 | Multiple Authors | [Sharing and Collaboration](#)

Meet the judges! Join a conversation about geospatial storytelling

Register for our Meet the Judges webinar to get storytelling, mapping, and design advice from the 2025 ArcGIS StoryMaps Competition judges.

[Read this article](#)

ArcGIS Online



August 10, 2025 | [Bern Szukalski](#) | [Mapping](#)

Pop-ups: image essentials



August 19, 2025 | [Bern Szukalski](#) | [Mapping](#)

Pop-ups: chart element essentials



August 20, 2025 | [Bern Szukalski](#) | [Mapping](#)

Pop-ups: text element essentials

ArcGIS Online



July 30, 2025 | [Emily Garding](#) | [Data Management](#)

5 in 2025: Tips for Easier Editing in Map Viewer



February 20, 2025 | [Stephanie Oliver](#) | [Mapping](#)

Designing Maps for Colorblind Readability



September 3, 2025 | [Deane Kensok](#) | [Announcements](#)

Overture Maps Data in ArcGIS

New data in Living Atlas



[Radon layer](#)



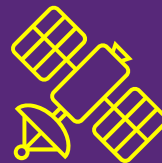
[Lidar layer](#)



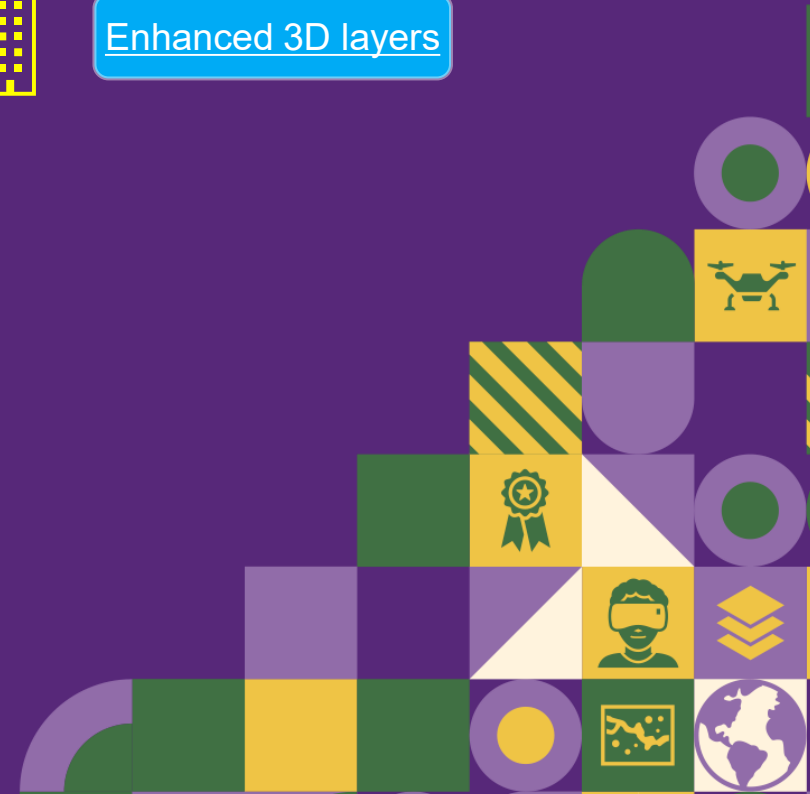
[Enhanced 3D layers](#)



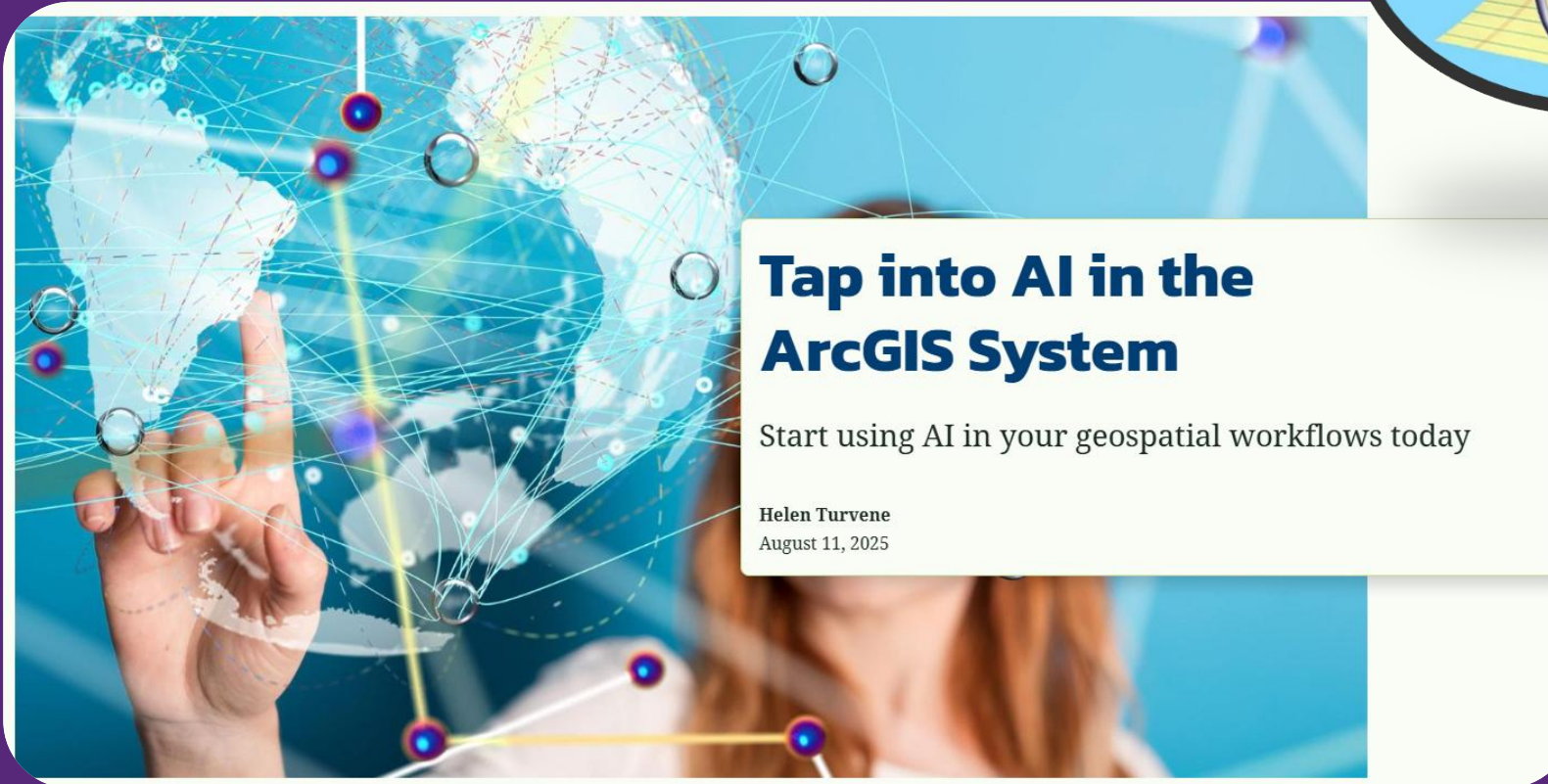
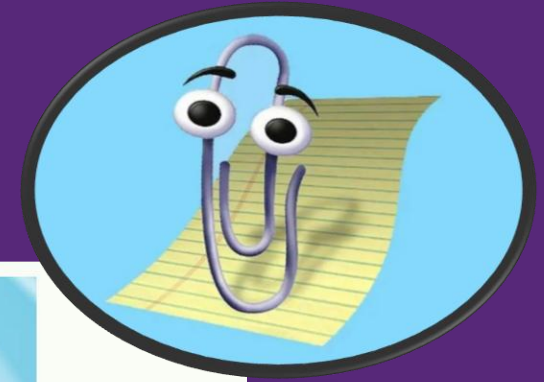
[National Highways](#)



[Sentinel-2 explorer](#)



AI Assistants

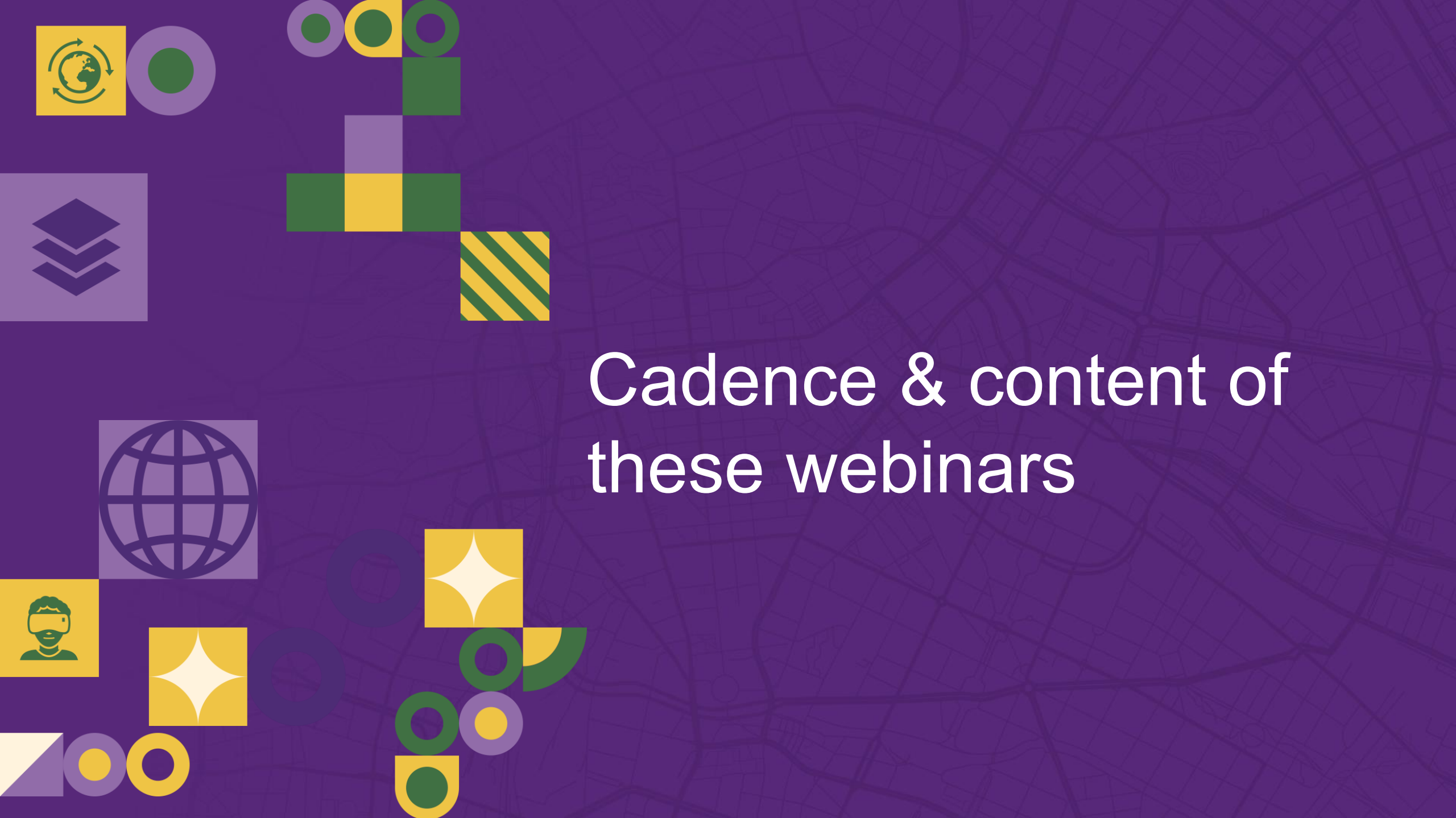


[illegible]

The only constant is change.

- CPD for lecturers
 - Focused on teaching
 - AGOL 1st approach
 - Level 4 examples
 - Pilot run with RGS in Sept 25
-
- We will circulate a form to register your interest





Cadence & content of
these webinars

Thoughts and Ideas

- Follow up on changes with more discussion
- Managing legacy users & data
- SSO (again)
- Teaching & research focus
- We will circulate a form to provide your input



Photo by [Matt Taylor](#) on [Unsplash](#)



Questions