

# Academic year kick off: Update on licensing and what's new in ArcGIS

29<sup>th</sup> October 2024

# Housekeeping

- Mics should be on mute
- Questions in slido
- Should be 30-40mins plus questions

#esri2910





# Future Webinars

#esri2910

- What would you like us to cover?
  - Imagery?
  - Drone2Map?
  - Fieldwork?
  - Spatial Analysis?



<https://app.sli.do/event/xjSWeAFy9igkXHsofS7JD3>

# What are we covering?

- Licensing changes for this academic year
- Offline use
- Resources
- What's new

ArcMap



<https://www.linkedin.com/in/julianamapper/>



# Licensing changes

- All licensing of ArcGIS should be through Named User Identities
- User type is now Professional Plus
- ESU / EFL codes may still be in MyEsri but will disappear at some point so DO NOT rely on them
- Business Analyst retired
  - Replaced by web application CHECK!!!!

# Licensing changes

Changes to ArcGIS licensing in Higher Education



## Changes to ArcGIS licensing in Higher Education

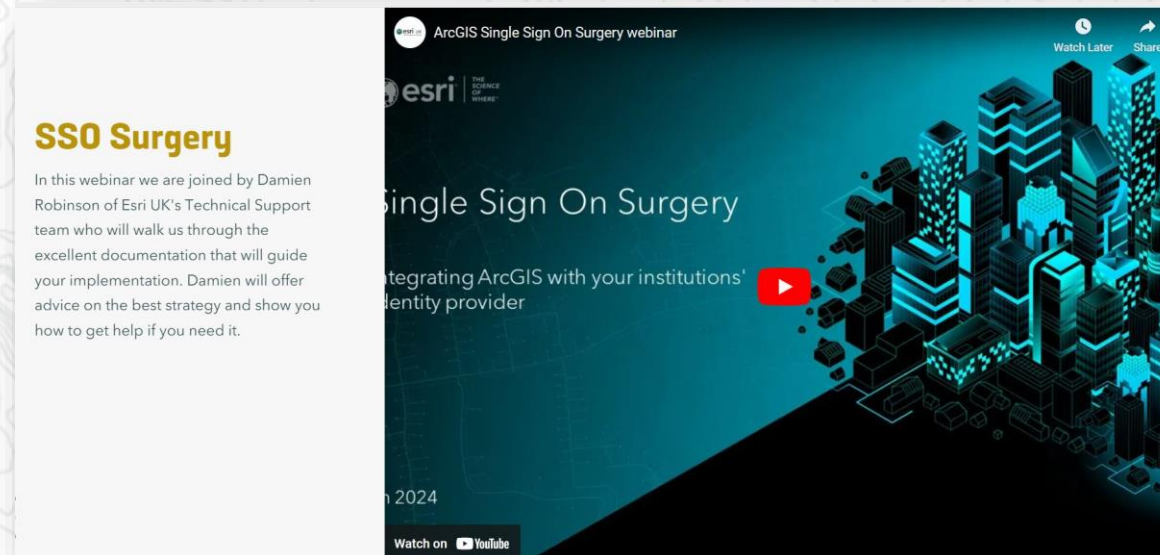
An overview of upcoming changes and guidance for institutions

**Benedek Marozsák**  
5 April 2024



# Licensing - SSO

- Many organisations are now using Single Sign On to help manage ArcGIS Users
- Set and forget\*



- \* there is a bit of work still on data governance when users leave org



# Offline use – do you need it?

- ArcGIS Pro requires a connection to the internet to start – validate license
- Doesn't need a persistent connection to the internet
- You can use ArcGIS Pro on a train with sporadic access to the internet.
- ArcGIS Pro pinging the license server uses minimal data

# Offline use – how to enable?

- Log into ArcGIS Online as admin
- Organisation → Licenses
- Manage ArcGIS Pro settings
- Uncheck the “Prevent users” function

The screenshot shows the ArcGIS Online Administration console. The top navigation bar includes 'Content', 'Organization', 'Overview', 'Members', 'Licenses', 'Status', and 'Settings'. The 'Licenses' tab is selected. A warning message at the top states: 'Some members have licenses assigned twice. These members have access to the same license through their user type and an add-on license. [Unassign duplicate add-on license]'. The main content area is divided into three sections:

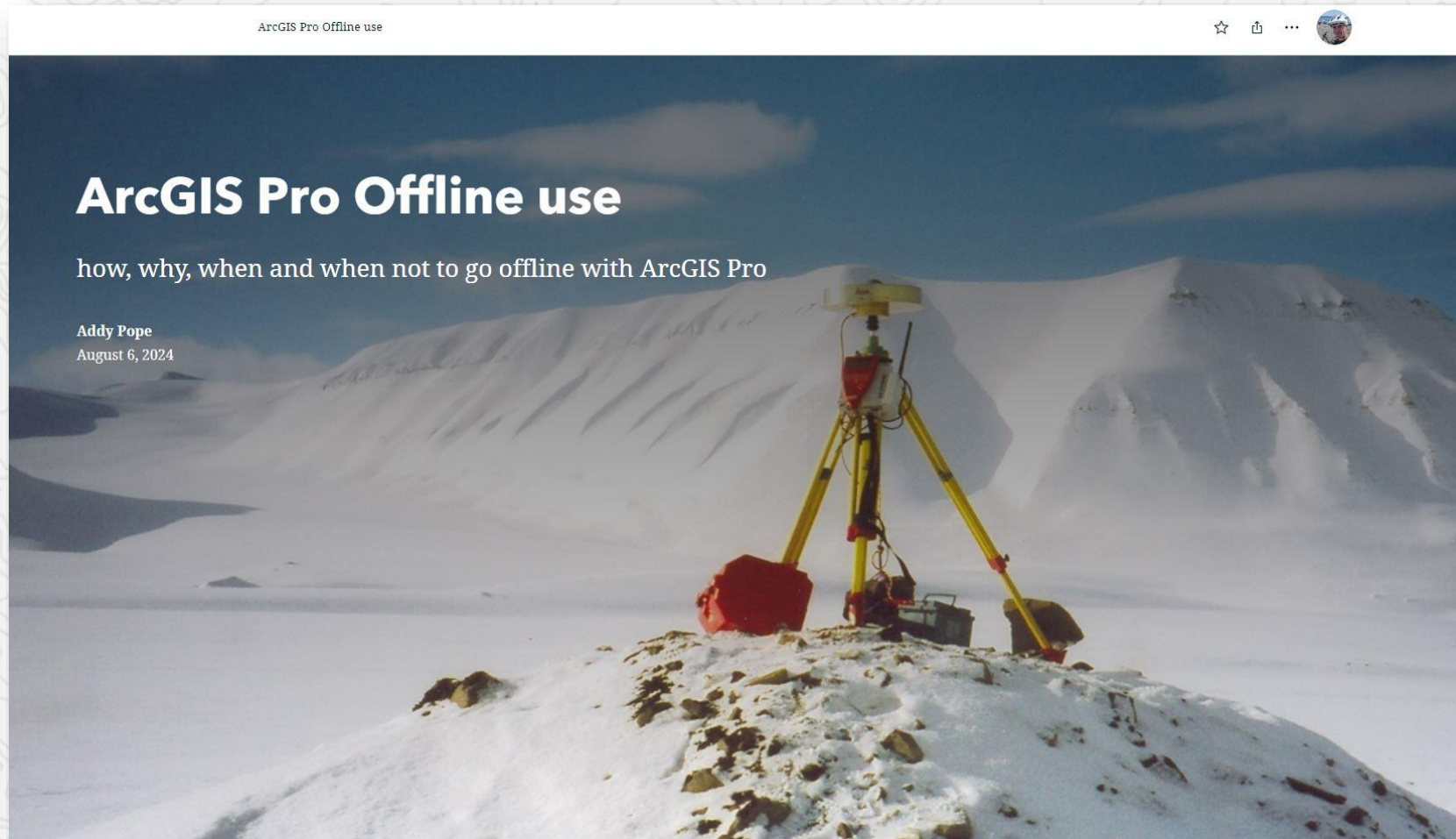
- Esri UK Education** (Edit settings):
  - Subscription ID: 3091184191
  - Feature Data Store: Standard, 4% storage used
  - Regional data hosting: United States
  - Services health dashboard: All systems operational
  - Created: Aug 14, 2012
  - Renewal date: Sep 13, 2025
- Credits** (View status):
  - Total remaining credits: 321,542.06
  - Last 7 days: 1,440.69
  - Last 24 hours: 197.79
  - Last 30 days chart: Storage (green), Analytics (blue), Subscriber content (orange). The chart shows a steady decline in credits over the 30-day period.
- Members** (Invite members | Manage members):
  - 96 members with unverified email addresses
  - Email verification helps members ensure they can receive critical information from ArcGIS Online, such as password resets and account changes. Members can verify their emails on the 'My settings' page, or when prompted at sign in.
- Add-on licenses** (Manage add-on licenses):
  - ArcGIS Pro Basic: 0 assigned, 500 available, 500 total
  - ArcGIS Pro Standard: 0 assigned, 500 available, 500 total



# Offline use – Issues

- Offline use solves 1 problem but introduces some points that should be considered:
- If a license is “checked out” on 1 machine – the user cannot log into another machine with their named user
- Users may go to the comp lab and find they cannot access ArcGIS Pro
  - Communicate why Offline use is only needed for remote field use
  - Discourage students for using it unless they really need
  - For field laptops – create a “laptop user” and check the license out onto that device.

# Offline use – How to enable





# Air-Gap

- Available on request
- Applications will be vetted
- Examples:
  - Secure data environments
  - Research vessels
  - Deep field
    - Arctic/Antarctic
    - Long off grid (>6 months)



# Resources

Get ArcGIS Learn About Find Data Manage ArcGIS Estates GIS & Climate Careers

## Lecture with GIS

Supporting the use of modern GIS to enable teaching and research across further and higher education in the UK and Ireland. Find out more about Modern GIS:

[Learn about Modern GIS](#)

**SERVICE UPDATE**  
*License changes for ArcGIS - 1st August 2024*

<b><u>GET</u></b> <i>Access to ArcGIS</i>	<b><u>LEARN</u></b> <i>Through subject-specific lessons</i>	<b><u>DATA</u></b> <i>Ready to use</i>
<b><u>MANAGE</u></b> <i>ArcGIS Licenses</i>	<b><u>CLIMATE</u></b> <i>Analysis with ArcGIS</i>	<b><u>CAREERS</u></b> <i>with GIS</i>



# Fieldwork

## Fieldwork With GIS

Find out how to collect your own data with ArcGIS and a smartphone.

Collecting data in the field using your smartphone is really easy with apps like Survey123 and FieldMaps for ArcGIS. Find out how to collect your own data or even collect data as a group.



### Capture Data

Capture data in the field quickly & easily on your mobile phone.



### Field Maps

Prepare and take maps into the field with ArcGIS Field Maps.



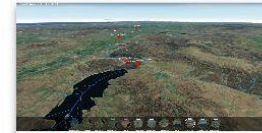
### Field Maps Designer

Collecting data in the field with ArcGIS Field Maps smart forms.



### Digital Field Notebooks

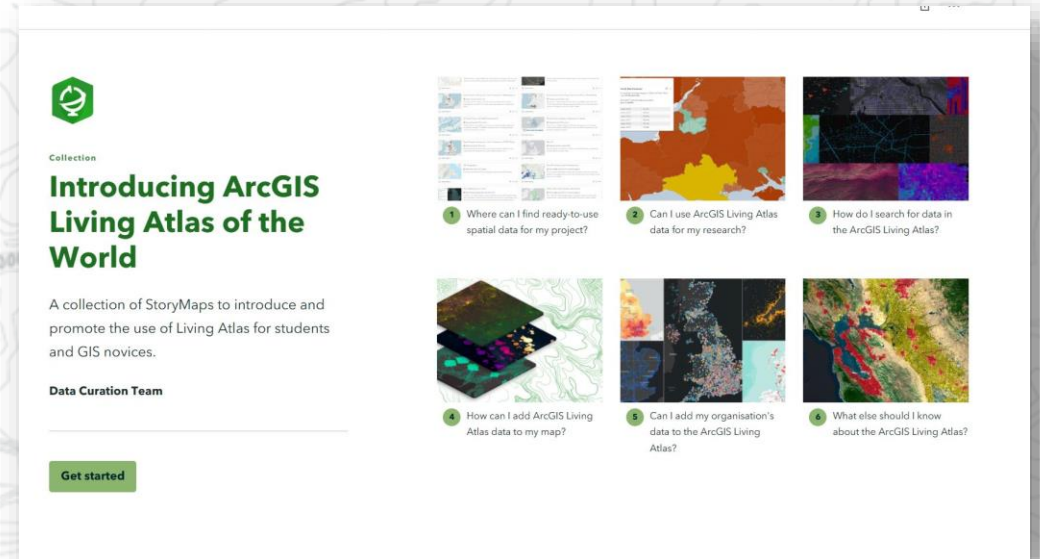
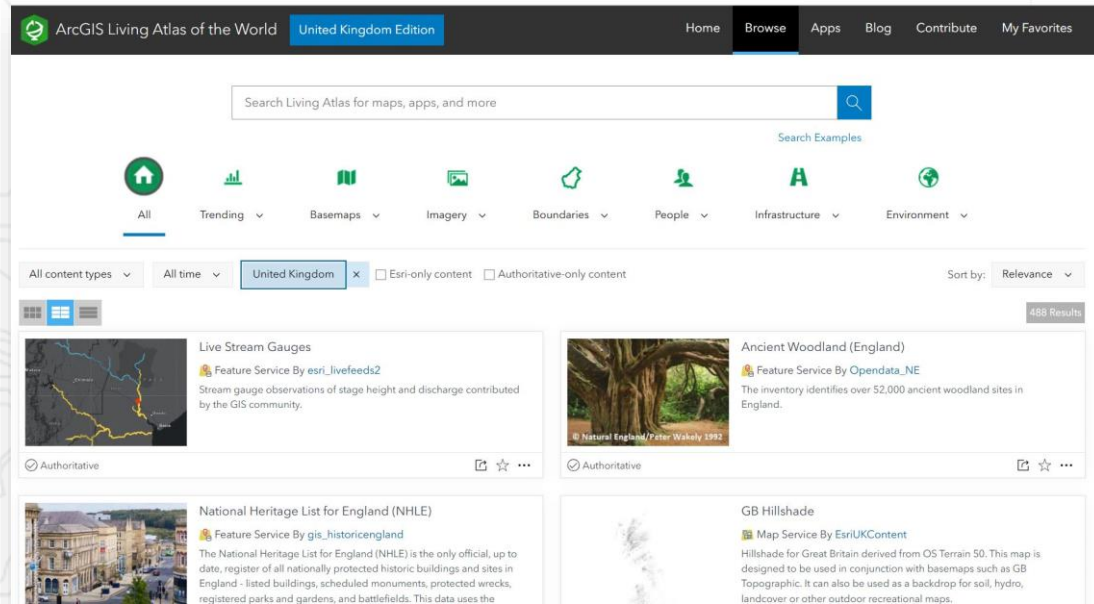
Use your phone as a digital note book in the field.



### Virtual Field Trips

Create an interactive virtual field trips in ArcGIS.

# Living Atlas - Data



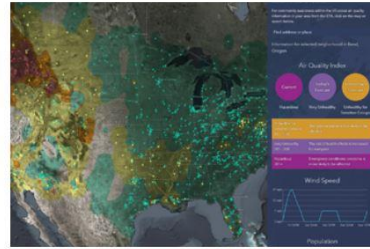
[More info](#)



# Living Atlas - Apps



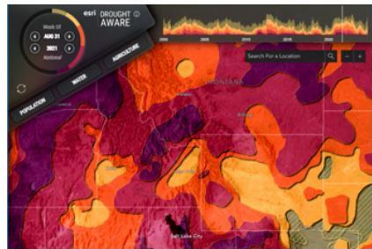
Wildfire Aware



Air Quality Aware



Hurricane Aware



Drought Aware



Sentinel-2 Land Cover Explorer



Landsat Explorer





# Esri Blogs



October 16, 2024 | [Diana Lavery](#) | [Decision Support](#)

**Calculating Median Household Income from Grouped Data**



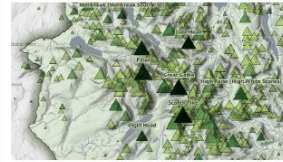
October 28, 2024 | [Multiple Authors](#) | [Mapping](#)

**Podcast 25 - Brian Baldwin, Esri - Be bold and go put yourself out there**



October 25, 2024 | [John Nelson](#) | [Mapping](#)

**Dashing Maps**



October 24, 2024 | [Heather Smith](#) | [Mapping](#)

**New tutorial series: Cartographic creations with web maps**



October 23, 2024 | [Multiple Authors](#) | [Constituent Engagement](#)

**Collaborating to Improve Communities with GIS**



October 23, 2024 | [Ian Muehlenhaus](#) | [Mapping](#)

**Navigation tools: Take Control of Geography in ArcGIS for MS365**



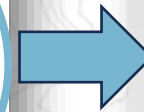
October 23, 2024 | [Multiple Authors](#) | [Data Management](#)

**ArcGIS Data Pipelines in Action: Real-World Benefits and Tips from a GIS Professional at the City of Cambridge**



October 23, 2024 | [Heidi Daulton](#) | [Constituent Engagement](#)

**Setting yourself up for a successful ArcGIS StoryMaps project**



## Cartographic creations with web maps

Map the Lake District of England with symbology, pop-ups, and layout techniques.

**Cartographic creations - About this tutorial series**

This 2-minute video describes what you will learn and make in the following 5 tutorials.

2 mins  
Video

**Cartographic creations - Style thematic data**

Map mountains with color, size, blending, effects, filters, and visibility ranges.

40 mins  
Tutorial

**Cartographic creations - Customize a basemap**

Add hillshading, contours, and hydrography to a basemap, and use it to change the map's projection.

30 mins  
Tutorial

**Cartographic creations - Make pop-ups and labels**

Create custom pop-ups and labels with text formatting, attribute expressions, and images.

30 mins  
Tutorial

**Cartographic creations - Guide users through a map**

Use ArcGIS StoryMaps to guide your audience through the important features of your map.

20 mins  
Tutorial

**Cartographic creations - Style and credit a story**

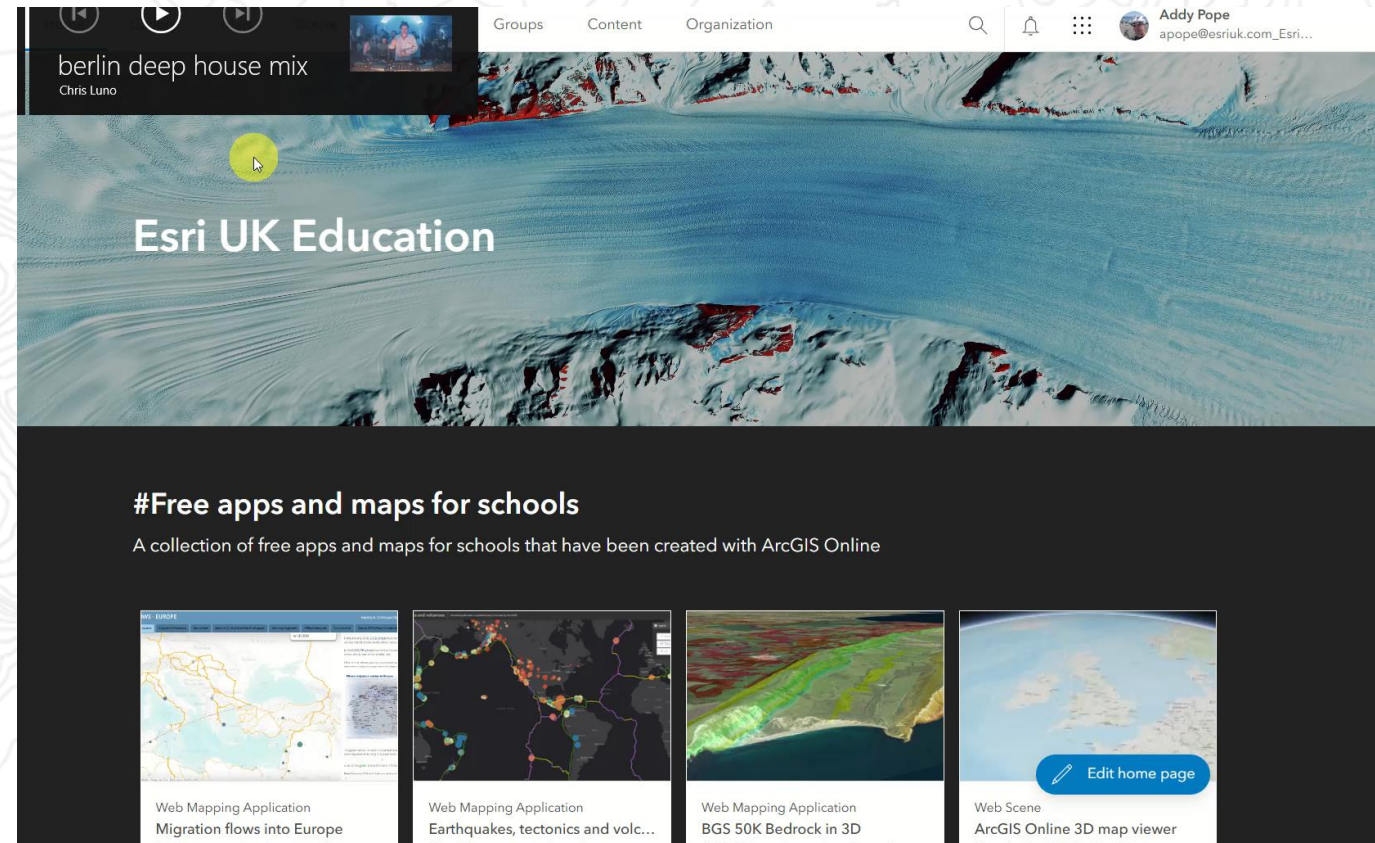
Customize a theme, add images, and credit data sources in ArcGIS StoryMaps.

33 mins  
Tutorial



# What's new?

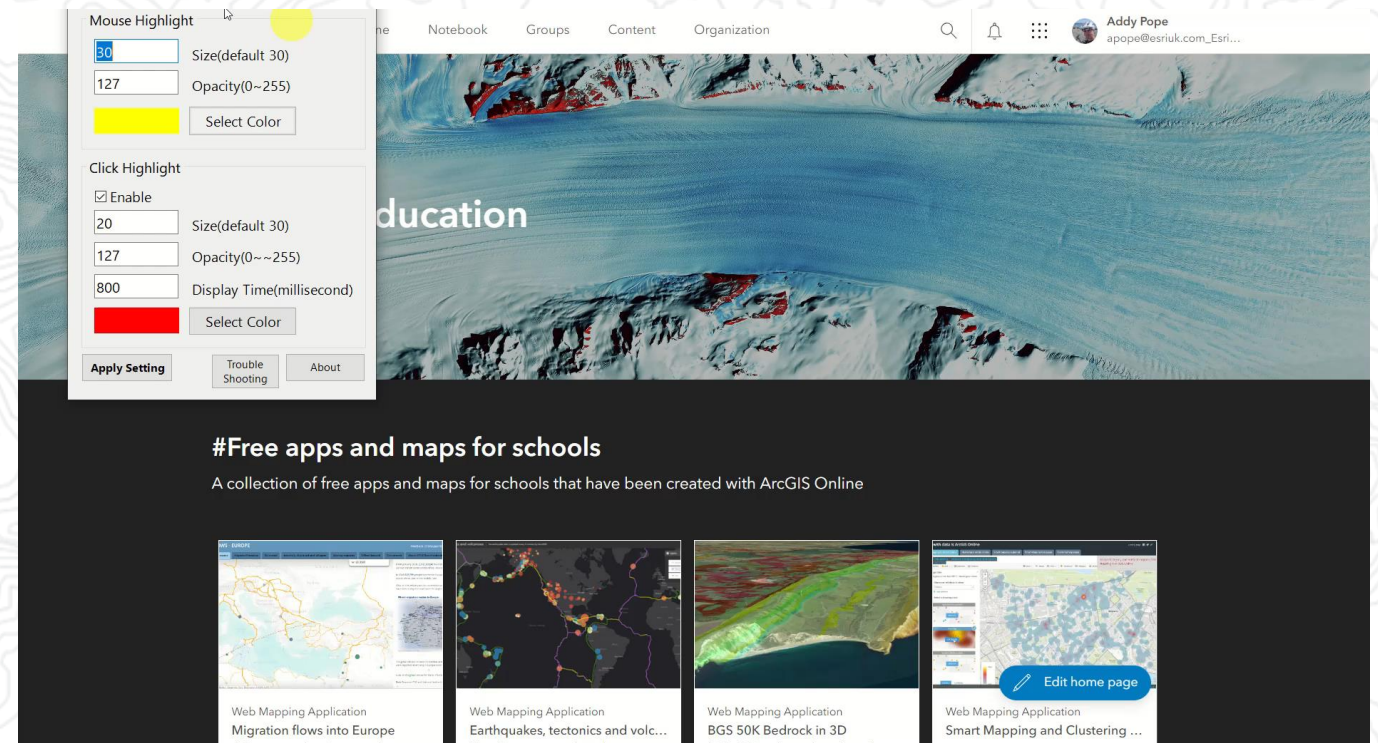
- ArcGIS Online - Recycle Bin
  - Admin sets up for organisation
  - Recycle bin or permanently delete
  - Items can be restored for a period of 14 days
  - Can turn off, but why would you!
  - It's a get out of jail card when you, or student make a mistake!





# What's new?

- Credit reporting
  - Enhanced reporting
  - Credits/ users / items
  - Export to excel
  - Schedule reports
  - Find issues early!





# What's new?

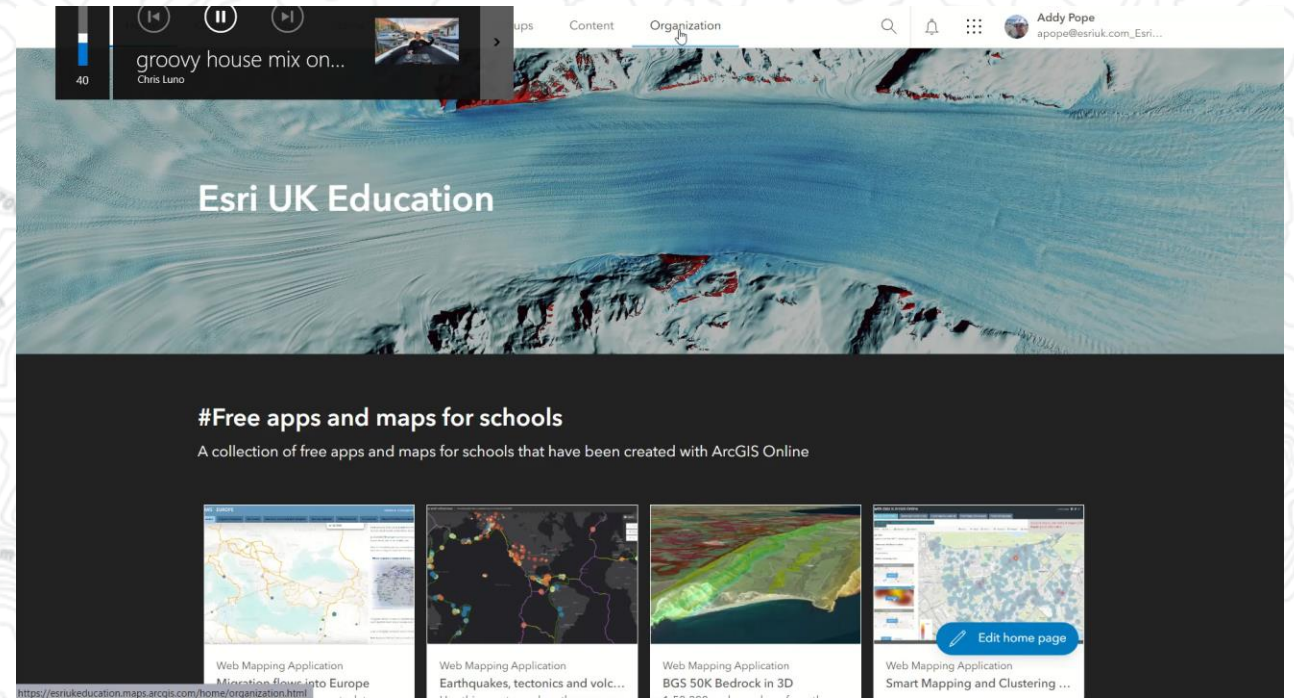
- Find issues early!

One to investigate!

	A	B	C	D	E	F	G	H	I	J	K	L	M	N	O	P	Q	R	S	T	U	V	W
1	Organization: Esri UK Education																						
2	StartTime: 1711929600																						
3	EndTime: 1719791999																						
4	Credits Co	App Title	ArcGIS No	ArcGIS No	Closest Fa	Demograp	Feature Re	Geocoding	GeoEnrich	Location-A	Multi-Vehic	Optimized	Origin Des	Scene Laye	Service Arc	Simple Rou	Spatial Ana	Tile Gener	Data Pipeli	Data Pipeli	Image	Feature Sto	File Storag
5	BMAROSZ/	ArcGIS Onl	0	0	0	0	0	0	0	0	0	0	0	0	0	0	0.01	0	0	0	0	0	0
6	DMorgan@	ArcGIS Onl	0	0	0	0	0	0	0	0	0	0	0	0	0	0	0.67	0	0	0	0	0	0
7	DMorgan@	ArcGIS Onl	0	0	0	0	0	0	0	0	0	0	0	0	0	0	0	0	0	0	0	0	0
8	DMorgan@	ArcGIS Bus	0	0	0	0	0	0	0.05	0	0	0	0	0	0	0	0	0	0	0	0	0	0
9	DMorgan@	ArcGIS Exp	0	0	15	0	0	0.44	0	0.2	0	0	0	0	0	0	0.29	0	0	0	0	0	0
10	Esri UK Education		0	0	0	0	0	0	0	0	0	0	0	0	0	0	0	0	0	0	0	13190.03	1368.57
11	acosse_es	ArcGIS Onl	0	0	0	0	0	0	0	0	0	0	0	0	0	0	1.12	0	0	0	0	0	0
12	apope@es	ArcGIS Onl	0	0	0	0.04	0	0	0	0	0	0	0	0	0	0	0.27	0	0	0	0	0	0
13	isadmin_esriukeducati		0	3.5	0	0	0	0	0	0	0	0	0	0	0	0	0	0	0	0	0	0	0
14	khall@esri	ArcGIS Onl	0	0	0	0	0	6.96	0	0	0	0	0	0	0	0	0.11	0	0	0	0	0	0
15	khall@esri	ArcGIS Bus	0	0	0	0.08	0	0	0	0	0	0	0	0	0	0	0	0	0	0	0	0	0
16	acosse_esriukeducati		0	0	0	0	0	0	0	0	0	0	0	0	0	0	0	0	0	0	0	0	0
17	Addy_Education		0	0	0	0	0	0	0	0	0	0	0	0	0	0	0	0	0	0	0	0	0

# Credit Budgeting

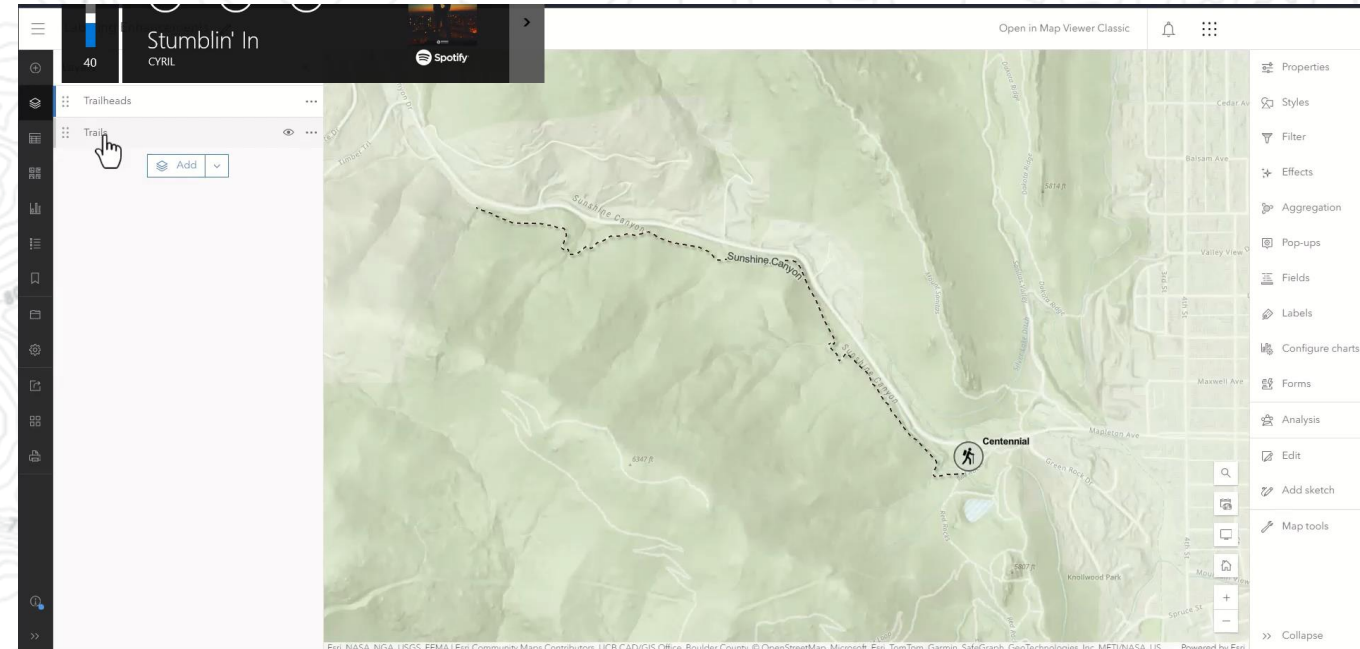
- Enable credit budgeting
- Set students at 1 level
- Set staff at a higher level
- Additional credits are available at a cost ~ £150 for 100,000





# ArcGIS Online - Labeling

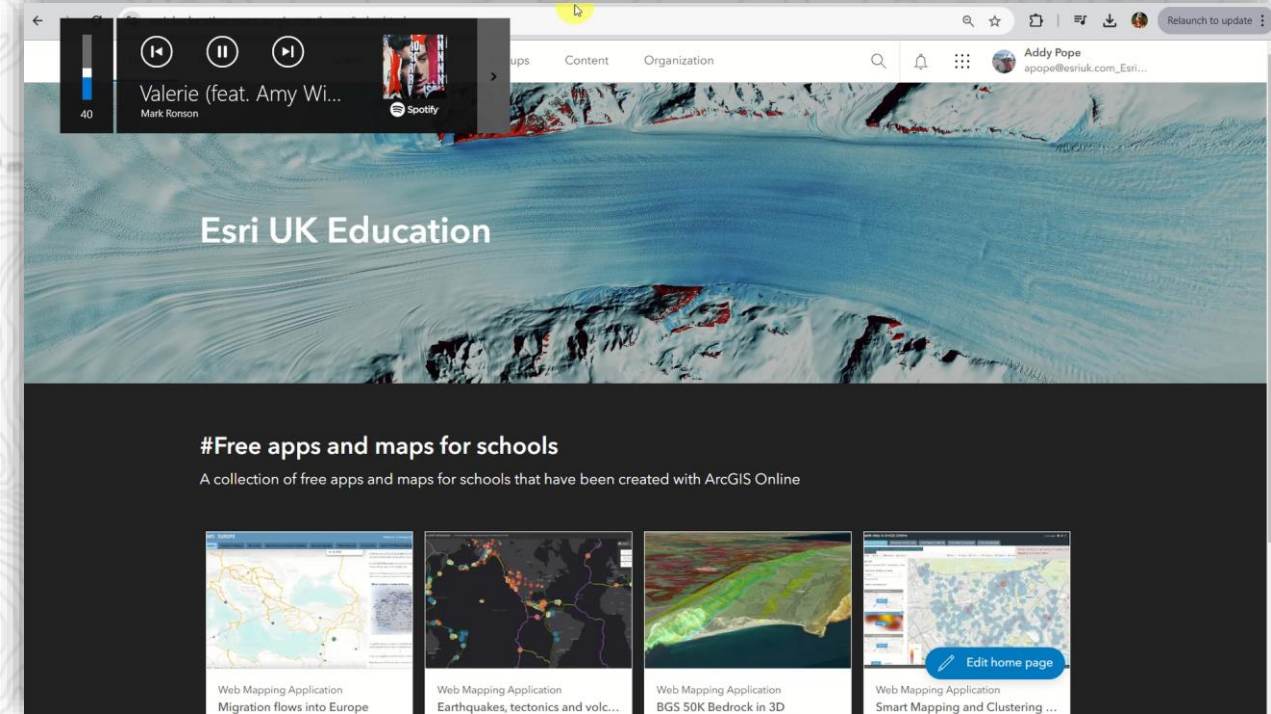
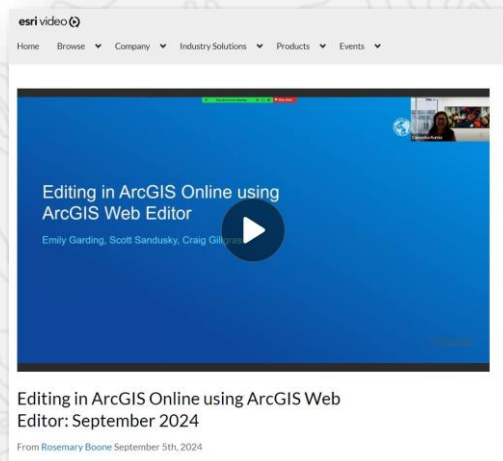
- Align labels to features
- Add backgrounds to labels
- Add halos



# ArcGIS Web Editor

Editing spatial data just got easier!

- Make data editing easier
- Maintain data rules





# ArcGIS Pro – Flood simulation

- Shallow water equations -
- Run “*what if*” simulations
- Configure the following behaviors
  - How water is added through rainfall, water source points, and initial depth
  - How barriers and channels redirect flow
  - How water is removed by infiltration and evaporation



[More info](#)

# What's new links

- [ArcGIS Online](#)
- [ArcGIS Pro](#)
- [Experience Builder](#)



# Next Webinar - GIS Day - 20<sup>th</sup> November



WEDNESDAY 20TH NOVEMBER 2024, 16:00 TO 18:00

## GIS Day Careers Webinar

Fancy a career in the geospatial industry? Not sure what the geospatial industry is actually like? Join this webinar to find out. A range of Esri UK staff will guide you through what they do day-to-day, how they got to where they are, and what the next step of their career might look like. There will also be lots of useful tips and tricks from new grads to senior management. Plus, plenty of time to ask questions to help you land the job you want in the growing Geospatial sector.

## GIS Day Careers Webinar

[More info](#)

Wed, Nov 20, 2024 4:00 PM - 6:00 PM GMT

[Show in My Time Zone](#)

Fancy a career in the geospatial industry? Not sure what the geospatial industry is actually like? Join this webinar to find out.

A range of Esri UK staff will guide you through:

- what they do day to day
- how they got to where they are
- what the next step of their career might look like

There will also be lots of useful tips and tricks from new grads, to senior management. Plus, plenty of time to ask questions to help you land the job you want in the growing Geospatial sector.



# Next Webinar – ArcGIS Imagery – 21<sup>st</sup> Nov



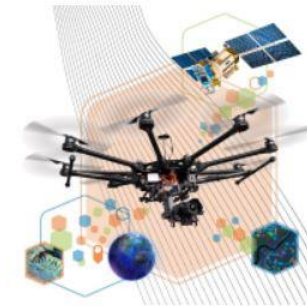
## Scaling up your knowledge of ArcGIS imagery

Thu, Nov 21, 2024 11:00 AM - 11:45 AM GMT

[Show in My Time Zone](#)

Join our webinar to learn more about the data, imagery types and possibilities with GIS.

We will discuss LiDAR data, showcasing the tools available in ArcGIS Pro, before moving onto 3D meshes and point clouds to uncover the possibilities when combining drone data with GIS through Site Scan for ArcGIS. We'll also cover the capabilities for ground-based captured imagery. Whether you're capturing your own imagery, looking for open libraries or dreaming of perfect premium imagery, this webinar will showcase the imagery sources and capabilities available with ArcGIS.



[More info](#)