

# Chest Agreements 2022

Software  
Online Resources

Licences for Universities,  
Colleges and the Research  
Sector in the UK and Ireland



# Introduction

## Welcome to the 2022 Chest Agreements Catalogue

**Chest Agreements are contracts with suppliers of commercially available software and online resources. They guarantee licence pricing and terms and conditions. Education and research communities in the UK and Ireland can take part.**

Chest Agreements saved more than £85 million in licence fees and efficiency savings in 2020/21.

There are currently 67 Agreements from 37 vendors.

**Software Agreements** cover products widely used in teaching and research, as well as administrative functions, and can be used to benefit the entire institution. They include:

- software from Microsoft and Adobe
- software in specialist areas such as GIS, statistics and maths, qualitative data analysis, mind mapping and more
- tools for software asset management and security
- software for administration of the institution

**Online Resource Agreements** include all types of digital resources: from eJournals, eBooks, backfiles, databases, reference materials, standards, to videos... and more.

### In the last year we have introduced 5 new Agreements:

- **Citavi**, from NVivo parent company QSR, is the only reference management program for teams that gives you the option of storing your information on your own server instead of in the cloud.
- **Maple Learn** is Maplesoft's online tool for teaching and learning mathematics that provides all the visualisation, solving tools, and interactivity you want while also giving you the flexibility to work through steps like you would on paper.
- **OxMetrics** is a family of software packages providing an integrated solution for the econometric analysis of time series, forecasting, financial econometric modelling and statistical analysis of cross-section and panel data.
- **ProWritingAid** is an AI-powered writing coach that helps students and faculty produce better papers in less time, going beyond standard grammar and spellchecking to provide in-depth text analysis.
- **Verbit** serves as a one-stop-shop for all university transcription and captioning needs, providing seamless integration and real-time service at competitive pricing that doesn't compromise on accuracy or speed.

## Working for you, with you

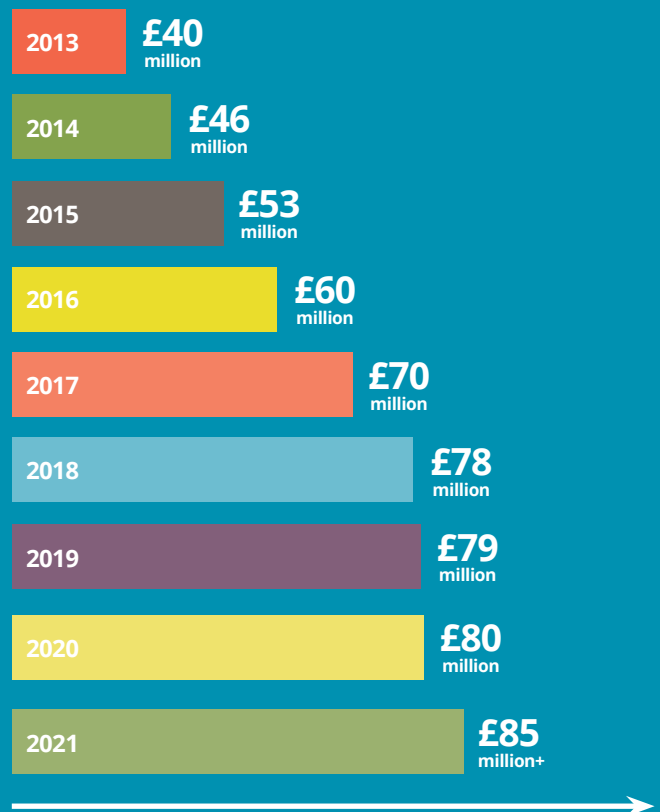
The continuing success of Chest relies on the support of our customers. They take the time to:

- provide constructive feedback on Agreement proposals
- suggest new resources to investigate
- attend meetings
- complete surveys, and
- much more...

### So a huge thank you to you all.

We look forward to working with and for you throughout 2022.

### 2021 Annual Savings\*



\*The method we use to calculate the savings compares the prices available under the Chest Agreements with the prices otherwise payable outside of them. Chest obtains the prices from the suppliers and other sources. Included in the savings is an estimate of the process time saved by institutions by not having to undertake negotiations themselves. The Higher Education Funding Council for England (HEFCE) approved the methodology some years ago and we continue to use the same approach today.

## Getting in touch

### Questions?

Please contact Chest Help:

Tel: **0300 121 0878**

(calls to 0300 numbers are charged at local rate)

Email: **[help@chest.ac.uk](mailto:help@chest.ac.uk)**

### Staying in touch

To join our mailing list for the latest news, event information and resources simply provide your email address in the form at the foot of the Chest website.

### Request a Catalogue

Like last year, due to the high proportion of people working from home and lack of physical events, we have taken the decision not to print the Chest Catalogue. Hopefully by 2023 normality will have returned and we will go back to making hard copies available as required.

## Table of contents

<b>Getting in touch</b>	<b>3</b>
<b>Other aspects of 2021</b>	<b>4</b>
<b>Keys to the Agreements</b>	<b>4</b>
<b>More about Chest Agreements</b>	<b>5</b>
<b>Software Agreements</b>	<b>6</b>
<b>Online Resource Agreements</b>	<b>16</b>
<b>Find out more about Chest</b>	<b>26</b>
<b>How to order</b>	<b>26</b>
<b>Collaboration</b>	<b>26</b>
<b>Being a Chest Representative</b>	<b>26</b>
<b>Agreements A-Z</b>	<b>27</b>
(including type of purchase/subscription, Agreement end dates, Licence and Invoice details)	

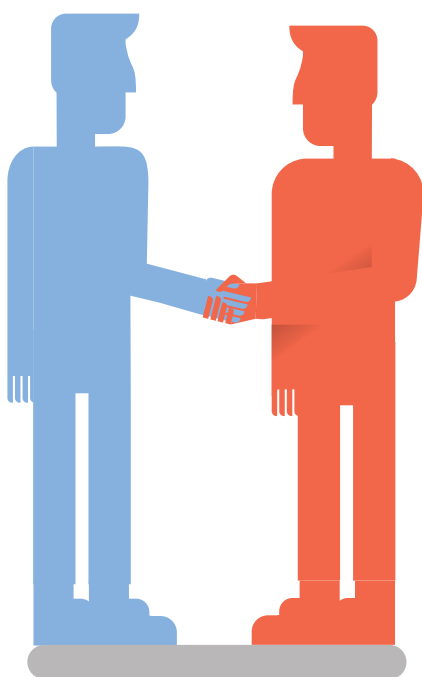
## Other aspects of 2021

### Agreement renewals completed:

- Brill
- Euromonitor
- Hexagon
- License Dashboard
- New Scientist
- Nielsen
- OECD
- OpenText
- Snow

### Coming soon – negotiations for these Agreements have already started:

- Adobe
- AMS (MathSciNet and AMS Journals)
- ESDU
- Faculty Opinions
- MarketLine
- PressReader
- QSR (NVivo and Citavi)
- SciFinder
- SciWheel



## Key to the Agreements

### Agreement categories

**ArtsHum** – Arts and Humanities

**Bus** – Business, Economics, Management and Law

**Creative** – Creative, Graphics, Media

**GIS** – Geographical Information Systems, geospatial data and maps

**MedPsc** – Medicine, Health and Psychology

**MedSci** – Medical Sciences

**Research** – Research and Analytic Tools and Reference Works

**SocSci** – Social Sciences

**STEM** – Science, Technology, Engineering, Maths including statistics and analysis

**SysServ** – Systems and Services

### Licence terms

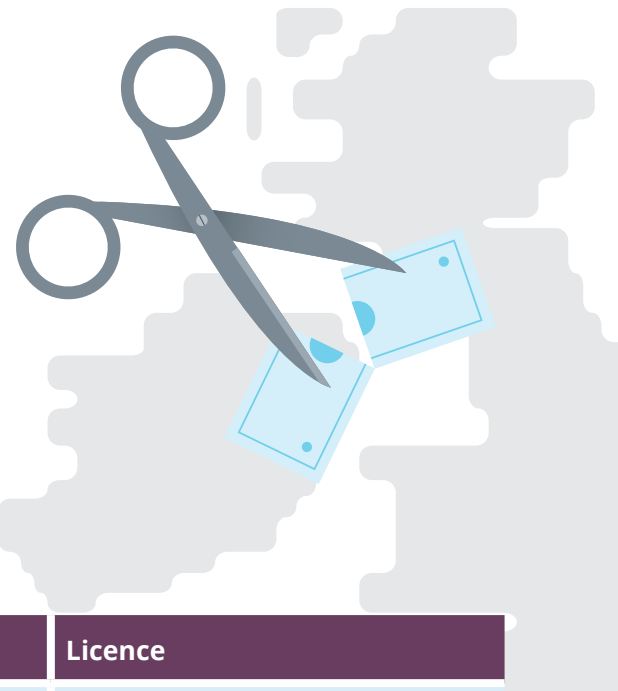
**Subscription** – multi-year subscriptions, usually paid annually, provide the right to use the products that you license during the licence period. Software assurance/maintenance/product updates are usually included at no extra charge. Typically, you may not use the resources once your subscription expires unless the licence is renewed.

**Perpetual** – you buy the resources outright and have perpetual use rights once the supported licence period ends. Most providers offer optional maintenance programmes to ensure that your resources are kept up to date or that you can continue to access the latest versions.

**Maintenance** – maintenance or software assurance, or ongoing access fees are available under the Chest Agreement.

**Home use** – this term is used usually for software that can be deployed on staff and/or students' personal computers. Check the website for specific details.

**Alumni** – remote access to resources for alumni is offered though other restrictions or additional charges may apply. Check the website for details.



# More about Chest Agreements

## What are Chest Agreements?

A Chest Agreement is a contract that guarantees licence pricing and terms and conditions for valuable software and online resources, negotiated on behalf of the education and research communities in the UK and Ireland.

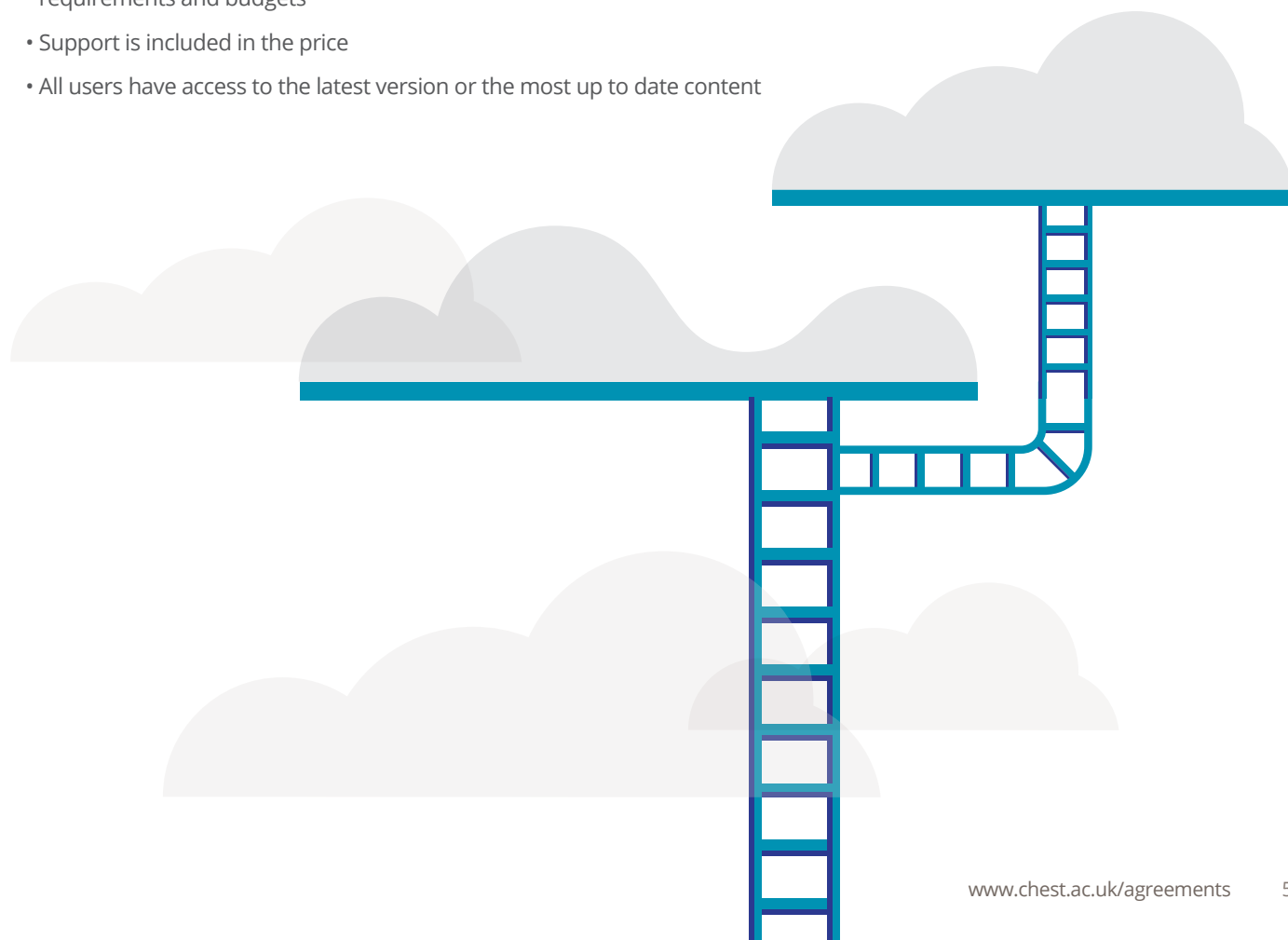
In 2020/21 Chest Agreements saved the academic community in excess of £85 million in licence fees and in efficiency savings.

## Features of a typical Chest Agreement

Preferential terms and conditions	Guaranteed pricing	Licence
Standard licence	Transparent, fixed, banded	Between the institution and the vendor or service provider
Based on UK Law	Usually over three-year term	Site licences cover use by all staff and students
Consistent and easy to understand language	Opt-out options or one-year licences are common	Administration and Management use often included

## Other benefits:

- The guaranteed pricing simplifies budgeting
- Pricing is often banded or tiered according to numbers of students or staff
- Many agreements offer flexible licensing options to meet different requirements and budgets
- Support is included in the price
- All users have access to the latest version or the most up to date content





# Software



## Adobe Creative Software

Adobe tools empower students to think creatively, communicate expressively, and gain invaluable skills that will help set them apart in the job market. The Adobe Chest Agreements provide a range of cost-effective ways for universities and colleges to bring the technology and creativity to the classroom and provide teachers with what they need to teach digital media skills.

### Adobe ETLA

#### Subscriptions and maintenance for Adobe's Creative Cloud Desktop Apps

This Agreement's renewal is currently being negotiated. Please see our website for the latest update.

 [www.chest.ac.uk/agreements/adobe-etla](http://www.chest.ac.uk/agreements/adobe-etla)

[Creative](#) [Subscription](#) [Maintenance](#) [Home use](#)

### Adobe Linked VIP

#### Flexible volume subscription licensing for the latest versions of Creative Cloud

The Value Incentive Plan (VIP) offers a lower cost way to deploy the right tools to the right people. Licences can be:

- used for administrative purposes
- bought on an ad-hoc basis
- purchased for departments or for students' labs

Chest consolidates purchases to achieve the highest level of discount available for all participants (there are normally four levels of discount based on the number of licences purchased). The individual institutions maintain control of deployment and management of their licences under their own Value Incentive Plans.

The annual fee to join the scheme is £0.

 [www.chest.ac.uk/agreements/adobe-vip](http://www.chest.ac.uk/agreements/adobe-vip)

[Creative](#) [Subscription](#) [Home use](#)

### RENEWED TO 2023

### Adobe Master CLP

#### Perpetual Licences for Adobe's most popular desktop products

The Cumulative Licensing Program (CLP) is a two-year membership licensing program in which universities and colleges can purchase perpetual software licences and optional upgrade plans for some of Adobe's most popular desktop products. These include Acrobat Pro, Captivate, ColdFusion and Director. It doesn't matter how small your organisation or your order – through the Chest scheme everyone gets the highest level of discount from the start.

The annual fee to join is £0.

 [www.chest.ac.uk/agreements/adobe-clp-2021](http://www.chest.ac.uk/agreements/adobe-clp-2021)

[Creative](#) [Perpetual](#) [Home use](#)

### Adobe Student ETLA

#### Bulk purchase Creative Cloud licences for students' own machines

Universities, colleges and sixth form colleges can bulk purchase Adobe Creative Cloud Licences for their students to install on their own PCs/Macs and mobile devices. The licence includes Adobe Creative Cloud desktop applications, mobile applications and cloud services. Minimum purchase numbers apply.

This Agreement's renewal is currently being negotiated. Please see our website for the latest update.

 [www.chest.ac.uk/agreements/adobe-student-etla](http://www.chest.ac.uk/agreements/adobe-student-etla)

[Creative](#) [Subscription](#) [Home use](#) – for students

### Savings

Institutions in the UK and Ireland will have saved over £110 million during the previous three years of our Adobe ETLA Agreement. The Agreement also gives many sites access to a site licence that they would normally be too small to obtain.

### Adobe Focus Group

All participants in the Adobe Agreements are welcome to attend meetings. There are usually two per year. See Software Messenger and [www.chest.ac.uk/events](http://www.chest.ac.uk/events) for details. For news join the mailing list: email [chest-adobe@jiscmail.ac.uk](mailto:chest-adobe@jiscmail.ac.uk) including 'SUBSCRIBE forename surname' within the body of your message.

### ESDU



IHS Markit®

#### The knowledge and experience of hundreds of engineers for your students

ESDU provides validated engineering design methods, empirical and theoretical data, worked examples and software tools that address a wide range of engineering disciplines. Much of the information is often only available through ESDU.

Many universities use ESDU in their curriculum to equip students with the necessary tools and knowledge used in industry by:

- including data into lecture notes, handouts, and visual aids
- setting coursework assignments that use ESDU data and/or software
- setting project work that uses the industrial methods

This Agreement will be renewed during 2022.

 [www.chest.ac.uk/agreements/esdu](http://www.chest.ac.uk/agreements/esdu)

STEM

Subscription

Home use

### Esri



esri UK

#### Equip your students with GIS data visualisation and spatial analysis skills

Esri's ArcGIS desktop, web and mobile apps are used by staff and students for teaching, research, estate management and reducing operational costs.

ArcGIS is a fully integrated suite of software for mapping, analysing, and sharing data.

This Agreement offers unlimited licences for institutions, allowing deployment way beyond the traditional uses.

Once equipped with data visualisation and spatial analysis skills, your students will qualify for occupations in countless fields.

 [www.chest.ac.uk/agreements/esri](http://www.chest.ac.uk/agreements/esri)

GIS

Subscription

Home use

### Esri UK Annual Conference 2022

Tuesday 17 May

Queen Elizabeth II Conference Centre, London

#### Discover the Power of Location

Bringing together over 2,500 GIS enthusiasts from a wide range of industries, to share knowledge and expertise at a sensational event you won't want to miss!

### Esri UK Steering Group

This group consists of representatives from Esri UK, Chest, institutions with knowledge of licensing and users of ArcGIS software in the academic community. It typically holds a couple of meetings a year (virtual/in person). If you would like to participate, please contact: [help@chest.ac.uk](mailto:help@chest.ac.uk)



## Examity



### A leading solution for online invigilation, offering a secure high-quality experience for those sitting exams remotely

Offering a choice of Live Proctoring and Auto Proctoring depending on your institution's needs and priorities, the Examity Chest Agreement is the only place where institutions can pre-purchase exam hours.

Pricing is dependent on the number of exams you wish to purchase but also the length of exams you are intending to run. Purchases are valid for two years from point of purchase for additional peace of mind.

[www.chest.ac.uk/agreements/examity](https://www.chest.ac.uk/agreements/examity)

Suitable for all subject areas

## Flexera



### Flexera's software asset management solution helps optimise licence consumption and reduce software costs

The Flexera Chest Agreement offers a package comprised of FlexNet Manager for Clients, FlexNet Manager for Datacentres, and Flexera SaaS Manager. Find more details on the webpages.

Pricing is based on institutional FTE numbers, making it a practical solution for any institution regardless of size. Keep an eye on the Chest webpages and newsletter for news of activities to support the Agreement throughout 2022.

[www.chest.ac.uk/agreements/flexera](https://www.chest.ac.uk/agreements/flexera)

SysServ

Subscription

**RENEWED TO 2024**

## Hexagon Geospatial



### Geospatial image processing, photogrammetry, GIS and server technologies

**Essentials Bundle** – a base version of the world-leading ERDAS IMAGINE and GeoMedia products, this single bundle spans both raster and vector processing.

**Desktop Imaging & GIS Bundle** – a complete image processing suite including ERDAS IMAGINE and ER Mapper, from ingestion and correction through to enhancement, classification, feature extraction and change detection; and GeoMedia, a complete GIS product encompassing all the functionality you would expect, from import and vector creation to editing, analysis, transaction management, linear networking parcel management, validation, and finally product preparation, creation, and printing.

**Enterprise Bundle** – offers licences of ERDAS APOLLO Professional, GeoMedia WebMap Professional, GeoMedia Smart Client Professional, Geospatial Portal and Geospatial SDI, designed to be installed and used as an enterprise solution.

**M.App Enterprise** – a privately hosted cloud platform for creating geospatial apps across multiple platforms including browser, desktop and mobile. The powerful geoprocessing engine offers hundreds of operators and analytical routines taken from ERDAS IMAGINE and GeoMedia, giving the optimal advanced raster and vector solution.

[www.chest.ac.uk/agreements/hexagon](https://www.chest.ac.uk/agreements/hexagon)

GIS

Subscription

Home use

## Discover Hexagon Geospatial U

**Hexagon Geospatial U** is an online community for all Hexagon Geospatial university educators, containing thousands of pages of curriculum including presentations for lectures, lecture notes, example data and step-by-step tutorials for students to follow for lab exercises. The curriculum materials are available to download and use as is or as a template with local datasets.



**RENEWED TO 2024**



## License Dashboard

### Innovative and adaptive solutions that track and manage software assets

License Dashboard will help you establish, understand, optimise and manage your software licences. All of which can lead to savings of up to 30% in overall IT spend.

The License Dashboard Chest Agreement offers "SAM Agile 3" which is comprised of the License Manager platform and portal, Connectors, Implementation, 3 Vendors onboarded, Quarterly Core Services, Account Management and End User Support.

License Manager is a powerful yet easy-to-use platform which allows organisations to accurately manage software licences.

The License Dashboard Chest Agreement offers three-year licences for the above products, with tiered pricing based on staff FTE count to make it as accessible as possible. Institutions purchase the SAM Agile package but can then add options as required.

[www.chest.ac.uk/agreements/license-dashboard](http://www.chest.ac.uk/agreements/license-dashboard)

SysServ

Subscription

## Maplesoft



### High-performance software tools for engineering, science, and mathematics

**Maple** helps make maths easier to learn, understand, and use. It combines the world's most powerful maths engine with an interface that makes it easy to analyse, explore, visualise, and solve mathematical problems.

**Maple Flow** is a whiteboard-style environment that allows engineers to easily brainstorm, develop, and document their design calculations.

**Maple Learn** is an online tool for teaching and learning mathematics that puts all the visualisation, solving tools, and interactivity you want at your fingertips.

**MapleSim** is an advanced modelling tool for complex engineering design projects.

**MapleSim Connector for FMI** (Functional Mockup Interface) allows sharing of high-fidelity, multidomain models created in MapleSim with other modelling tools.

**Maple Overseas Campus** expands your licence to cover on-site use at your overseas campuses.

#### Student and Staff Distribution/Virtualisation Extension

– Distribution allows users to install Maplesoft software on their personally-owned computers, Virtualisation allows users to access Maplesoft software remotely from any computer using an internet connection.

[www.chest.ac.uk/agreements/maplesoft](http://www.chest.ac.uk/agreements/maplesoft)

STEM

Subscription

Home use

**NEW**



## Maple Learn for FE & Schools

### Maplesoft's online tool for teaching and learning mathematics that puts all the visualisation, solving tools, and interactivity you want at your fingertips

With over 30 years of experience of working with educators to bring software to the mathematics classroom, Maplesoft has developed Maple Learn, an online teaching and learning environment that supports and enriches how you teach, making it easy to bring the benefits of technology to your students.

With Maple Learn you can:

- provide illuminating graphs, computations, explanations, and interactive explorations in a single online document
- focus students' attention on the most important steps
- provide more engaging examples
- parameterise expressions at the click of a button
- easily create and share documents and applications with your class
- use one tool to teach all your subjects

A three-year licence covers access from both institutional and personal devices (there is also an annual opt out without penalty clause).

[www.chest.ac.uk/agreements/maple-learn-for-fe-and-schools](http://www.chest.ac.uk/agreements/maple-learn-for-fe-and-schools)

STEM

Subscription

Home use

## Microsoft Education Solutions



Easy, cost-effective licensing and software assurance on-premises, in cloud and hybrid IT environments such as Office, SharePoint, SQL Server and Exchange, operating systems such as Windows Server and Windows Desktop Upgrades. These programmes provide an EU compliant procurement route through a choice of resellers that are on the National Framework Agreement for Software Resellers.

### Microsoft EES Education Qualified User

#### Affordable volume-based licensing for enterprise desktop products

The Chest Microsoft EES EQU Agreement provides the following benefits over a standard Microsoft EES EQU Agreement:

- minimum staff EQU requirement reduced from 1,000 EQU to 100 EQU
- English law rather than Irish
- Level B pricing for all sites, which is normally only available to institutions with more than 3,000 EQU (around a 7% saving on core products)

Additionally, sites committing for three years with Microsoft can access the following benefits:

- additional discount for M365 A3 in year one only of your agreement, normally only available to sites with more than 10,000 EQU
- transitional relief for sites moving from an FTE EES to an EQU EES
- for sites that chose 100% M365 A5 in year one of your enrolment, additional discounts will apply in all three years of your agreement

For institutions that enrol with Microsoft for one year only and choose 100% M365 A5 coverage, there will be an additional discount over and above normal Level B pricing.

[.../agreements/microsoft-ees-education-qualified-user](https://www.chest.ac.uk/agreements/microsoft-ees-education-qualified-user)

Subscription

Home use

### Microsoft Select Plus

#### Perpetual purchases of desktop and server products

For academic customers who purchase software licences in quantity and manage software across multiple devices, this Agreement offers a cost-effective and efficient way to buy.

By enrolling in this scheme universities and colleges can purchase perpetual licences for Microsoft desktop products, in addition to server software such as SQL Server, SharePoint, Exchange and Windows Server.

Other benefits include:

- free to join for members of Chest Microsoft EES EQU Agreement
- ability to buy single licences – there's no need to commit to buy in volume
- availability of software assurance

[www.chest.ac.uk/agreements/microsoft-select-plus](https://www.chest.ac.uk/agreements/microsoft-select-plus)

Perpetual

Maintenance

### Microsoft Special Interest Group

All participants in the Chest Microsoft Agreements are welcome to attend meetings of this group. We normally hold one or two meetings per year. Check the events section on the Chest website for details.

[www.chest.ac.uk/events](https://www.chest.ac.uk/events)

### Microsoft EES Savings

The unique Chest Microsoft EES EQU Agreement saves UK universities and colleges in excess of £1.9 million per year.



## MindGenius



### Bring MindGenius cognitive power tools to your campus

MindGenius mind mapping can stimulate creativity, improve communication skills, and increase productivity for your students and faculty.

With a variety of built-in tools, MindGenius helps people create, organise, and prioritise as they work with ideas and information – for writing projects, class notes, lesson plans, class presentations, project management, and much more.

The Campus-Wide program provides MindGenius for Windows and cloud-based MindGenius Online – for both PC and Mac users.

[www.chest.ac.uk/agreements/mindgenius](http://www.chest.ac.uk/agreements/mindgenius)

Research

Subscription

Home use



## Noteable



### A cloud-based service platform for computational notebooks with an auto-grading assignment feature

Developed by EDINA at the University of Edinburgh, Noteable provides access to the most popular computational notebooks including Python 3, R and RStudio and specialist library notebooks such as Language and Machine Learning, SageMath, Chemistry, and GeoScience.

Notebooks that are available within Noteable come with a large number of libraries and extensions pre-installed. There is also an auto-grading feature, enabling teachers to set assignments for learners in a virtual class with defined rules to generate automated marking of the code that the learner has written; an excellent way to quickly mark assessments in a course.

Licensing is based on the number of users with both a one and a three-year licence available.

[www.chest.ac.uk/agreements/noteable](http://www.chest.ac.uk/agreements/noteable)

STEM

Subscription

Home use

## NAG



### Enhancing learning and enabling cutting-edge research in maths and high-performance computing

NAG resources are used to solve complex mathematical problems in a diverse range of mathematical areas such as financial analysis, business analytics, science, engineering and research.

The NAG Library is a collection of high quality, robust, documented, tested and maintained mathematical and statistical algorithms. It is available for use with a variety of programming languages, platforms and operating systems.

NAG also produces the NAG Fortran Compiler which offers improved code portability and detailed error reporting.

[www.chest.ac.uk/agreements/nag](http://www.chest.ac.uk/agreements/nag)

STEM

Bus

Subscription

Home use

NAG encourages students by sponsoring PhD candidates, offering student placements and internships and work experience positions. They recognise and reward exceptional talent through their NAG Student Award Programme.

RENEWED TO 2026

## OpenText

OPENTEXT  
The Content Experts™

### Fast, reliable access to a variety of enterprise applications

OpenText products provide access to a variety of enterprise applications, including host systems such as UNIX and Linux, Microsoft Windows, mainframes, network file systems and more.

The OpenText Chest Agreement offers **OpenText Exceed** (connecting Windows desktops to graphical applications running X Window hosts), **OpenText NFS Solo and Server** (allowing access to NFS resources from Microsoft Windows PCs) and several other popular OpenText products including **OpenText Exceed 3D**, **OpenText Exceed OnDemand**, **OpenText Host Explorer**, **OpenText Secure Shell**, and **OpenText Business Intelligence**. See the Agreement webpages for more information.

The Agreement offers the choice of three or five-year licences at a discount of c.95% versus commercial rates. It also allows sites to 'pick and mix' products meaning you only need to licence what you want.

[www.chest.ac.uk/agreements/opentext](http://www.chest.ac.uk/agreements/opentext)

SysServ

Subscription

NEW



## OxMetrics

**OxMetrics is a family of software packages created by academics for academics, providing an integrated solution for the econometric analysis of time series, forecasting, financial econometric modelling and statistical analysis of cross-section and panel data**

The OxMetrics Chest Agreement offers a three-year licence with simple fixed pricing. It allows unlimited access to all modules for the entire institution. The modules included are: OxMetrics Enterprise Edition 8; CATS 3 (Cointegration of Time Series Analysis); Ox Professional 8; PcGive Professional 15; G@RCH 8.0; STAMP 8.3; SsfPack 3.

[www.chest.ac.uk/agreements/oxmetrics](http://www.chest.ac.uk/agreements/oxmetrics)

STEM

Bus

Home use

## Practice Labs



**Powering-up digital skills for your staff and students**

What if your students, your staff and your IT team could all develop their hands-on digital skills in a safe, live environment – without any risk to your critical business systems? Now they can.

The Practice Labs Private Cloud hosts hundreds of pre-configured virtual machines containing live-lab environments – from entry-level guided labs covering fundamental computer skills and cyberawareness through to technical labs and freestyle sandboxes for your IT staff to utilise for testing and experimentation.

The Agreement offers a choice of Single Lab or an Unlimited Library, and named or concurrent user models, with installation and customisation also available.

Pricing is for a one or three-year term, with an additional discount available to Institutes of Technology who place multiple orders above a certain threshold.

[www.chest.ac.uk/agreements/practice-labs](http://www.chest.ac.uk/agreements/practice-labs)

SysServ

Subscription

## Prolifiko

## Prolifiko

**Improving the writing and publishing productivity of academics and researchers**

Writing and publishing is vital to scholarly success and institutional reputation.

Prolifiko offers coaching and online workshops for your academics that help to combat the blocks and barriers to writing.

**Prolifiko Digital Productivity Package:** six-months' access to the Prolifiko Digital productivity platform and an online writing productivity coaching course.

**Prolifiko Digital plus Tailored Workshop:** a six-month subscription to Prolifiko Digital, an online course, and a live expert-led workshop/webinar and Q&A tailored to the needs of the Licensor's authors.

**Writing Productivity Workshop:** a face-to-face workshop delivered on-campus by productivity experts. Content is tailored and includes practical exercises and on-site advice.

**Consultancy/White-labelled Content:** Prolifiko designed and developed faculty and researcher development training, or bespoke productivity content such as email and/or video courses or webinars.

[www.chest.ac.uk/agreements/prolifiko](http://www.chest.ac.uk/agreements/prolifiko)

Research

Subscription

NEW



ProWritingAid

## ProWritingAid

**ProWritingAid offers world-class grammar and style checking combined with more in-depth reports to help you strengthen your writing. The unique combination of suggestions, articles, videos, and quizzes makes writing fun and interactive**

This competitor to Grammarly is now available through Chest, allowing institutions to purchase as many unlimited one or three-year licences as they would like at discounted prices. Institutions can also choose between 'Academic' and 'Academic Plus' licences, the latter adding in a plagiarism checker.

Secure data handling and no data storage means ProWritingAid is the preferred choice of many academic and corporate organisations. Learn more on the Agreement's webpages; we'll be running a number of events over the year to support this Agreement.

[www.chest.ac.uk/agreements/prowritingaid](http://www.chest.ac.uk/agreements/prowritingaid)

Suitable for all subject areas

## QSR



QSR International is a qualitative research software developer with global reach. Their qualitative and mixed-methods data analysis software tools are much-used by academics and professional researchers, helping them to make sense of data – text, videos, social media and more.

The QSR Agreements will be being renewed during 2022.

## NEW

## Citavi



**Citavi is the only reference management program for teams that gives you the option of storing your information on your own server instead of in the cloud**

This all-in-one referencing and notetaking solution, designed for individuals and teams, allows you to search resources from around the world, create tasks, analyse texts, save quotations and ideas, create outlines for drafts, and write reports, articles, or books.

In 2021 QSR acquired the EndNote competitor Citavi, and this is now available to order through Chest either as part of a bundle with NVivo or as a standalone product.

Like NVivo, pricing is banded, with three and five-year unlimited site licences available. Trials are available and encouraged.

[www.chest.ac.uk/agreements/citavi](http://www.chest.ac.uk/agreements/citavi)

Research

Subscription

Home use

## NVivo



**#1 software chosen by academics for qualitative research**

NVivo is software that supports qualitative and mixed methods research. It lets users collect, organise and analyse content from text, images, video, audio, emails, spreadsheets, online surveys, web and social media data in virtually any language. It is ideal for complex research projects, whether working solo or in a team.

The NVivo Chest Agreement offers huge discounts and unlimited licences.

The Agreement also offers licences for NVivo Collaboration Server (formerly NVivo for Teams), a separate application installed on a server at your institution. It allows multiple users in the network, on their local NVivo installations (Windows only), to work on the same project at the same time. Users see other users' changes in real time.

A new version of NVivo was released in 2020 and is available now at no extra cost. Ask Chest Help for more information.

[www.chest.ac.uk/agreements/nvivo](http://www.chest.ac.uk/agreements/nvivo)

Research

Subscription

Home use

## NVivo Collaboration Cloud



**NVivo Collaboration Cloud uses the power of the cloud to enable teams to work together on NVivo projects**

As research teams expand in size and geography, so does the importance of collaboration with colleagues. Share data, expertise, and insights with NVivo's collaboration solutions. Collaboration Cloud allows teams to bring together the right people to deliver the best research outcomes in one central project.

The Agreement allows institutions to purchase annual licences for the number of users they require, with those licences being effectively unlimited. The discounted academic pricing also offers tiers dependant on the number of users.

[www.chest.ac.uk/agreements/nvivo-collaboration-cloud](http://www.chest.ac.uk/agreements/nvivo-collaboration-cloud)

Research

Subscription

Home use

## NVivo Transcription



**Automated transcription assistant integrated into NVivo**

The NVivo Transcription Agreement now offers per user annual licences with banded pricing.

With NVivo Transcription researchers simply upload their audio file and let the software do the rest, saving time and money versus manual processes. With good quality audio, they can expect up to 90% accuracy and a file transcribed in a timespan of half the length of the audio. They can then make amendments, notes and tag speakers using the specialised editor and directly import transcribed files into NVivo.

NVivo Transcription works both with and without NVivo; more and more institutions are looking at it as a standalone transcription tool.

[www.chest.ac.uk/agreements/nvivo-transcription](http://www.chest.ac.uk/agreements/nvivo-transcription)

Research

Subscription

Home use



SAS



## Prepare your students and researchers to meet the increased demand for advanced analytics skills

SAS Analytics skills are highly sought after in today's employment market.

The Education Analytical Suite for teaching and academic research integrates several commonly used SAS Analytics foundation software products in a bundle. There are options to add individual products from SAS's Advanced Analytics and Business Intelligence Technologies Groups.

The flexible licensing options are designed to meet the distinct needs of departments, schools/faculties or an entire campus.

Users get free access to SAS's award-winning e-learning courses as part of their licence.

The Agreement also offers licences for SAS Viya, SAS's new cloud-enabled analytics engine.

 [www.chest.ac.uk/agreements/sas](http://www.chest.ac.uk/agreements/sas)

STEM

Bus

Subscription

Home use

RENEWED TO 2024

Snow



## Drive down software costs and ensure licence compliance

Snow License Manager gives a unified view of hardware and software assets and usage metrics.

The renewed Chest Agreement offers a unique academic unlimited site licence with banded pricing for five key components:

- EUC & DC Adoption Tracker
- EUC & DC Technology Spend Optimization
- Snow Productivity Optimizer
- Snow ITSM Enhancer
- SaaS Technology Spend Optimization Bundle

It also offers a range of supporting services to provide a comprehensive and cost-effective SAM solution tailored specifically for universities, colleges and more.

 [www.chest.ac.uk/agreements/snow](http://www.chest.ac.uk/agreements/snow)

SysServ

Subscription

With free access to the **SAS Joint Certificates Programme** included with their SAS licence universities can prepare their staff to support students who intend to research or work in a data-rich business environment and help bridge the analytic skills gap.

NEW

Verbit



## Verbit is one of the leading providers of transcription and captioning services, offering an interactive solution of technology and a human touch

They provide seamless integration and real-time service at competitive pricing that doesn't compromise on accuracy or speed. They make captions not just an accommodation feature, but a learning feature to benefit all students.

Verbit partners with institutions to help promote access and engagement – from the classroom to commencement. Verbit's technology is purpose-built, so its post-production and live integrations allow you to automatically caption sessions with accuracy to meet compliance requirements seamlessly and engage more effectively with others.

The Verbit Chest Agreement offers a choice of 24/48/72 hour turnaround on transcription and captioning, with Human Layers plus Automatic Speech Recognition software. Institutions purchase credit to a certain value and then call off services as required.

 [www.chest.ac.uk/agreements/verbit](http://www.chest.ac.uk/agreements/verbit)

Suitable for all subject areas



# Online Resources



## American Mathematical Society



The AMS, founded in 1888 to further the interests of mathematical research and scholarship, serves the mathematical community through its publications, meetings, advocacy, conferences and other programs.

**These Agreements will be being renewed during 2022.**

### AMS Journals

#### Mathematics Journal backfiles from 1891 covering a broad range of mathematics

AMS journals backfile titles include:

- The Journal of the AMS, and Mathematics of Computation
- Proceedings, Transactions, and Memoirs of the AMS
- Transactions of the Moscow Mathematical Society
- Theory of Probability and Mathematical Statistics
- St Petersburg Mathematical Journal, and Sugaku Expositions

The subscription price depends on the number of participants.

 [www.chest.ac.uk/agreements/ams-journals](http://www.chest.ac.uk/agreements/ams-journals)

STEM

Subscription

### AMS MathSciNet

#### Reviews, abstracts and bibliographic information for mathematical sciences literature

MathSciNet is a searchable database of reviews, abstracts and bibliographic information of mathematical sciences literature, dating back to the early 1800s. Over 125,000 new items are added each year, and most is classified according to the Mathematics Subject Classification.

New subscribers help to reduce the cost for all participants and benefit from lower charges in their first and second year.

 [www.chest.ac.uk/agreements/mathscinet](http://www.chest.ac.uk/agreements/mathscinet)

STEM

Subscription

### AMS Memoirs of the AMS

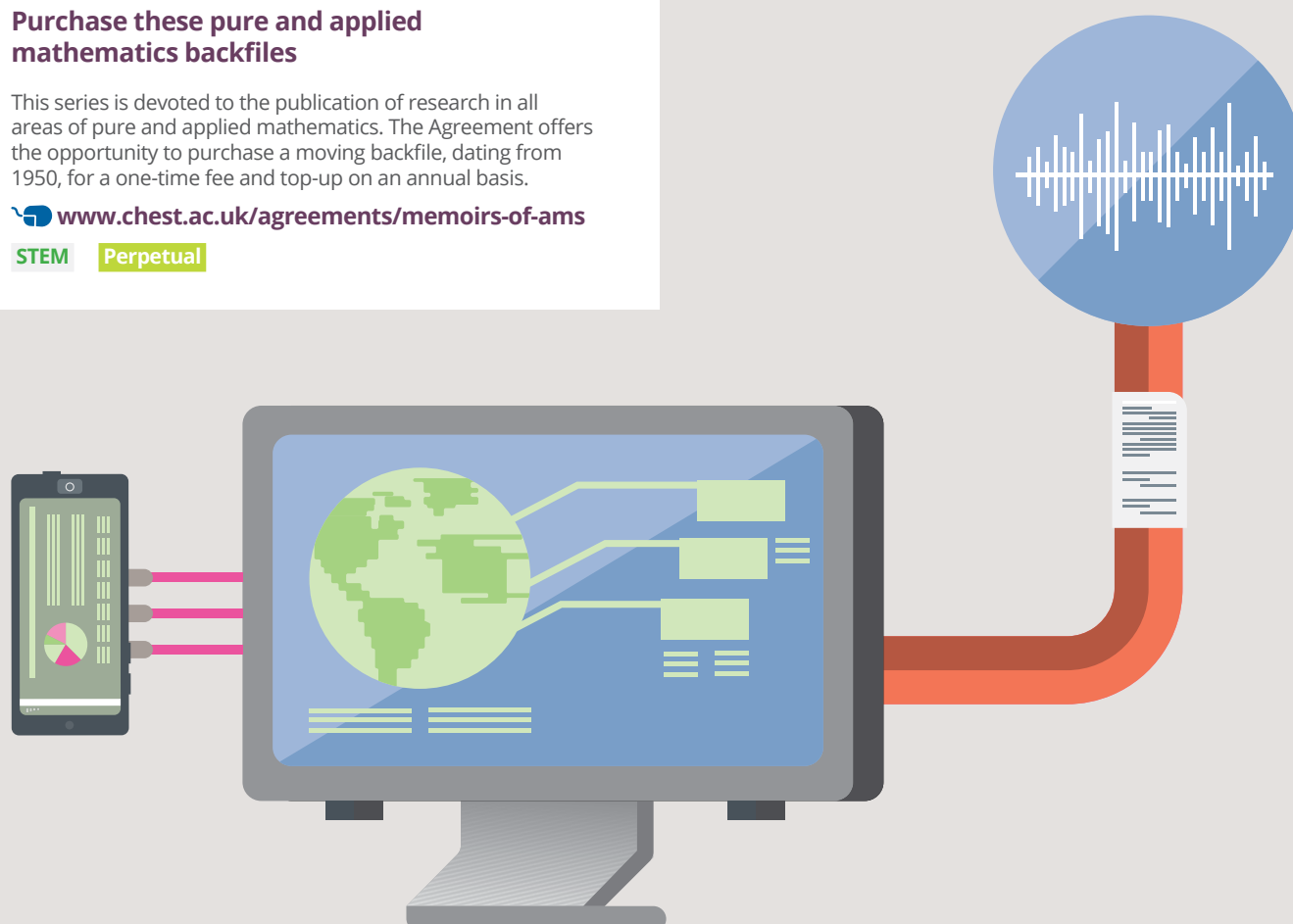
#### Purchase these pure and applied mathematics backfiles

This series is devoted to the publication of research in all areas of pure and applied mathematics. The Agreement offers the opportunity to purchase a moving backfile, dating from 1950, for a one-time fee and top-up on an annual basis.

 [www.chest.ac.uk/agreements/memoirs-of-ams](http://www.chest.ac.uk/agreements/memoirs-of-ams)

STEM

Perpetual





# American Psychological Association

APA is a leading scientific and professional organisation whose mission is to advance the creation, communication and application of psychological knowledge to benefit society and improve people's lives. A range of publications and collections are available covering topics ranging from Addictions, Anxiety, Children, Depression, Ethics, Race, Sexuality, Stress, Therapy, Workplace Issues, and more.

With the exception of APA Books E-Collections and Handbooks, APA Agreements are banded by FTE, with each of the following titles available in **the appropriate Agreement**.

## APA Books E-Collections

### Annual collections of APA-published scholarly and professional books

Purchase individual copyright year collections of leading scholarly and professional American Psychological Association books. They provide in-depth coverage of sub-fields in psychology and related disciplines. Available from 2001 onwards and delivered exclusively on the APA PsycNET® platform. Now Includes 2022 E-collections.

[.../agreements/apa-ebooks-and-handbooks](#)

MedPsyc

SocSci

Perpetual

## APA Handbooks in Psychology

### Authoritative reference series detailing a wide variety of psychology sub-disciplines

These reference books provide a one-stop shop of essential knowledge and in-depth analyses of a variety of sub-fields within psychology. New titles are added annually.

[.../agreements/apa-ebooks-and-handbooks](#)

MedPsyc

SocSci

Perpetual

## APA PsycArticles

### Delve into the science of psychology and behavioural research

PsycArticles contains the full text of some of the most highly cited publications in psychology, including all APA journals, the Canadian Psychological Association, and the Hogrefe Publishing Group. With current coverage of 119 journals and historical content, in some cases dating back to 1894, the collection provides access to a wide range of research in the field.

MedPsyc

SocSci

Subscription

## APA PsycBooks

### Current and comprehensive library of APA-published scholarly and professional books

A subscription to PsycBooks offers access to the current library of APA published scholarly books, including all the reference titles in the APA Handbooks in Psychology® Series. Along with the expansive backfile that includes classic works dating back to the 17th century, it provides an important research tool for the behavioural sciences. New titles are added annually.

MedPsyc

SocSci

Subscription



# American Psychological Association



## APA PsycExtra

### New developments and research in psychology and the behavioral sciences

PsycExtra provides hard-to-find content from authoritative sources, beyond traditional peer-reviewed research materials: conference proceedings, newsletters, reports, patient-oriented factsheets and brochures, magazines, monographs, standards and guidelines, and more. PsycExtra complements PsycInfo and there is no overlap of records.

[MedPsyc](#)
[Research](#)
[SocSci](#)
[Subscription](#)

## APA PsycInfo

### Explore the breadth of research in the behavioural and social sciences

PsycInfo is a world-class resource for abstracts and citations of behavioural and social science research.

Focused on the interdisciplinary aspects of the behavioural and social science research and literature, PsycInfo is a perfect resource for locating scholarly research findings in psychology and related fields across a host of academic disciplines, from the historical to the cutting edge.

[MedPsyc](#)
[Research](#)
[SocSci](#)
[Subscription](#)

## APA PsycTests

### A one-of-a-kind resource for psychological measurement and instrumentation tools

PsycTests is an extensive collection of psychological measures, scales, surveys, and other instruments essential to the research needs of professionals, students, and educators across the behavioural and social sciences. It provides an essential resource for researchers looking to conduct, create, or measure research in multiple fields of study.

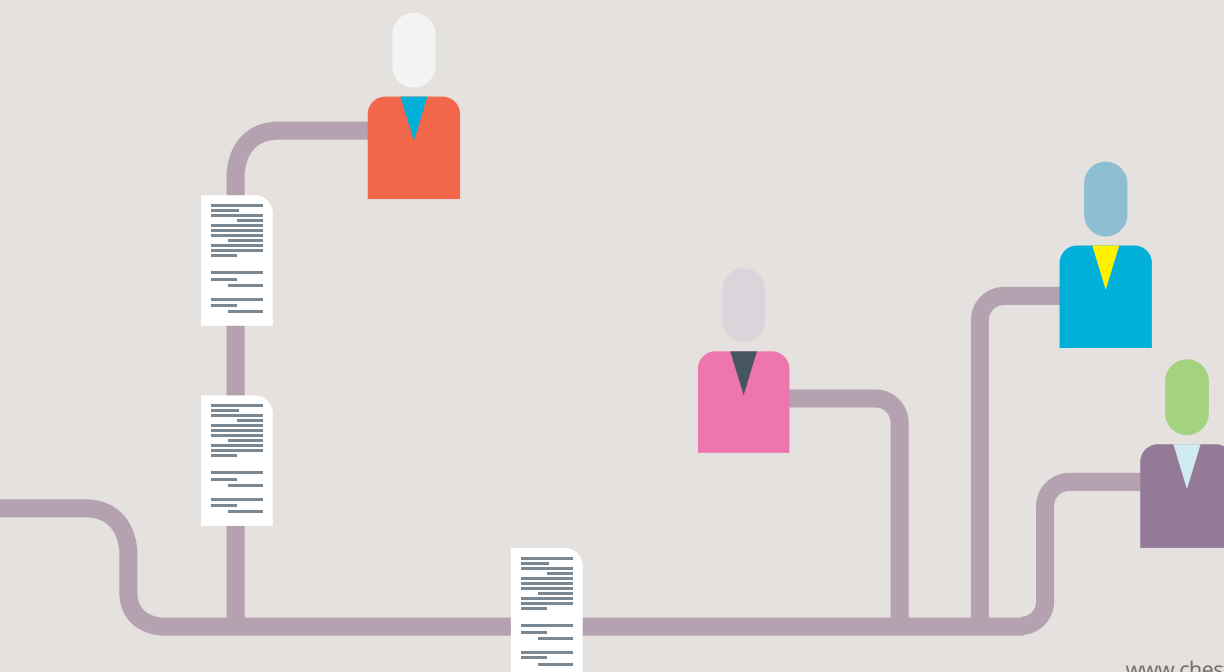
[MedPsyc](#)
[Research](#)
[SocSci](#)
[Subscription](#)

## APA PsycTherapy

### Streaming videos for teaching and learning psychotherapy techniques

PsycTherapy provides academics, researchers and students the opportunity to observe candid psychotherapy videos. This proven counselling training method is an invaluable tool to remain abreast of the latest psychotherapy techniques.

Therapists cover more than 100 approaches, such as integrated behavioural health care, cognitive behaviour therapy, and acceptance and commitment therapy.

[MedPsyc](#)
[Research](#)
[SocSci](#)
[Subscription](#)


RENEWED TO 2024



## Brill

Founded in 1683, Brill is a Dutch publishing house with a rich history and a strong international focus. Brill's publications focus on the humanities and social sciences, international law and selected areas in the sciences.

As well as the below Agreements, 'Brill Bespoke Packages' are also available to previously subscribed sites. Contact Chest for more information.

### Brill E-Book Collections

#### Purchase collections of titles by subject and copyright year

The expanded e-Book collection offers multiple-purchase discounts. Subject areas covered include Humanities and Social Sciences, Law, and Biology. Other content includes Brill | Sense, Ferdinand Schöningh, Wilhelm Fink, Mentis, and Brill | Rodopi.

The eBooks are exclusively available from Brill.

 [www.chest.ac.uk/agreements/brill-ebooks](http://www.chest.ac.uk/agreements/brill-ebooks)

ArtsHum

MedPsych

Research

SocSci

Perpetual

### Brill Hague Academy Collected Courses Online

#### Nearly 100 years of scholarship of international law in French and English

Founded in 1923, The Hague Academy of International Law is a leading centre for teaching and research in public and private international law.

Experts from all over the world deliver courses and seminars to an international audience of young lawyers with a view to promote knowledge and contribute to the establishment of peace. The lectures are published in the Collected Course Online.

 [www.chest.ac.uk/agreements/brill-hacco](http://www.chest.ac.uk/agreements/brill-hacco)

Bus

Research

Subscription

Perpetual

### Brill Online Reference Works and Databases

#### Subscriptions to prestigious reference works and primary source materials

Brill offers reference works and databases, including prestigious publications such as the Encyclopaedia of Islam and Brill's New Pauly. Packages include:

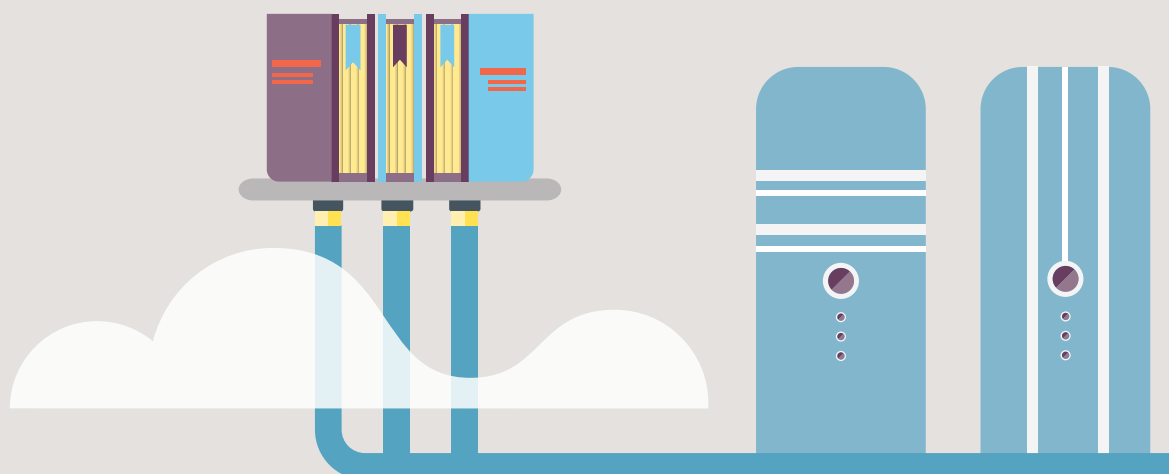
- Classical World Online Package comprising New Pauly Online, Jacoby Online and Supplementum Epigraphicum Graecum
- Index Islamicus Online
- Encyclopaedia of Islam and Encyclopaedia of the Qur'an Online
- World Religion Database
- World Christian Database

 [www.chest.ac.uk/agreements/brill-online-reference](http://www.chest.ac.uk/agreements/brill-online-reference)

ArtsHum

Research

Subscription



## COBRA



### Cobweb Information's range of factsheets, start-up guides and sector reports

The **Complete Business Reference Adviser** offers reliable, practical content that explains regulations, trading issues, opportunities and developments in over 550 small business trades and sectors. The range of business start-up guides, regulatory factsheets, industry reports and updates, as well as a UK-wide directory of local business support schemes make it ideal for someone who is thinking of setting up their own small business.

COBRA is used in university and college libraries, careers services, enterprise centres, and in knowledge transfer activities.

 [www.chest.ac.uk/agreements/cobra](http://www.chest.ac.uk/agreements/cobra)

Bus Research Subscription

## Compendex and EI Backfile



### A holistic and global view of peer-reviewed engineering literature

**Compendex**, engineering bibliographic database with over 20 million records from 77 countries across 190 engineering disciplines, is indexed using the Engineering Index Thesaurus. Compendex covers these related areas:

- Applied Physics, including Optics
- Bioengineering and Biotechnology
- Food Science and Technology
- Materials Science
- Instrumentation, including Medical Devices
- Nanotechnology

**Engineering Index Backfile**: a comprehensive, historical view of engineering developments and innovations described in literature from 1884-1969.

 [www.chest.ac.uk/agreements/ei-compindex](http://www.chest.ac.uk/agreements/ei-compindex)

Research STEM Subscription Perpetual





## Emerald

Emerald is a global publisher that champions new ideas that advance the research and practice in business and management and in applied fields including health and social care, education and engineering.

Access to Emerald content can be extended to education partners and alumni with optional licence extensions.

Institutions are also able to purchase pre-paid APC vouchers to cover the cost of publishing open access and minimise the administration associated with open access payments through [the Emerald Gold Open Access APC Bundles](#).

### Emerald eBooks Select

#### eBooks reflecting the latest emerging trends and fresh thinking

Choose from more than 2,600 titles across the complete eBook catalogue to create your bespoke package. Subjects covered include accounting, HR, engineering, transport, humanities, social care, education, social sciences and more.

 [www.chest.ac.uk/agreements/emerald-ebooks](http://www.chest.ac.uk/agreements/emerald-ebooks)

Bus Perpetual Alumni

### Emerald eCase Collection

#### Global case materials to engage and inspire your students

A single, annual subscription to the Emerald eCase Collection provides unlimited access to a continuously developing digital library of more than 1,500 real-world case studies.

The collection features teaching material licensed from global case method advocates, that supports tailored discussion based on student experience, expectation and capability.

 [www.chest.ac.uk/agreements/emerald-ecases](http://www.chest.ac.uk/agreements/emerald-ecases)

Bus Subscription Alumni

### Emerald Emerging Market Case Studies

#### Authentic examples of organisational challenges within emerging markets

This peer-reviewed collection of case studies focusing on business decision making and management development throughout key global emerging markets provides a powerful teaching aid.

Each case is accompanied by teaching notes that have been compiled at some of the world's best business schools.

 [www.chest.ac.uk/agreements/emerald-emcs](http://www.chest.ac.uk/agreements/emerald-emcs)

Bus Perpetual Alumni

### Emerald Expert Briefings

#### Position teaching and research in a real-world context

Powered by Oxford Analytica and providing impartial analysis of macro-economic and geopolitical events in real time, Emerald Expert Briefings help global political and business leaders understand the implications. Subscribers receive a daily briefing.

 [.../agreements/emerald-expert-briefings](http://.../agreements/emerald-expert-briefings)

Bus Subscription Alumni

### Emerald Subject Collections FE

#### Comprehensive coverage across key disciplines offering new perspectives

Colleges can choose packages to fit their curriculum and budget, selected from over 300 titles:

- Emerald Management eJournals Portfolio is divided over 9 management disciplines
- Four Emerald Subject Collections comprised of Education, Engineering, Health & Social Care and Library Studies
- Subscription enables compliance with funder open access policies

 [.../agreements/emerald-subject-collections-fe](http://.../agreements/emerald-subject-collections-fe)

Bus Subscription Alumni

### Emerald Subject Collections HE

#### Subscribe to the entire Emerald Premier cross-disciplinary eJournal database or pick specific collections

Emerald eJournals are divided into 9 management and 4 complementary specialist subject areas. HE institutions can pick across the nine Management and the four Specialist Collections. Alternatively, the Premier Collection consists of all 13 collections.

Emerald eJournals features the latest peer-reviewed, international research in established and emerging areas of interest. Premier combines Management and Specialist Collections, and provides the full breadth of Emerald's high quality publishing from leading researchers around the world.

 [.../agreements/emerald-subject-collections-he](http://.../agreements/emerald-subject-collections-he)

Bus Subscription Alumni



## ESDU Validated Engineering Data

### Prepare your engineering students with the latest tools, design methods and data

ESDU's methods, best practices, data and software tools that help solve complex Aerospace, Automotive, Mechanical, Structural and Process Engineering problems.

Representing the collective knowledge of hundreds of engineers, the data and information is often only available through ESDU.

Many major universities use ESDU data and software in teaching and graduate and postgraduate research projects.

This Agreement will be being renewed during 2022.

[www.chest.ac.uk/agreements/esdu](http://www.chest.ac.uk/agreements/esdu)

STEM Subscription

RENEWED TO 2025



## Euromonitor Passport

### Data and insight on industries, economies and consumers worldwide

Offering internationally comparable market research, Passport provides intelligence on the industry and economic landscape in more than 200 countries and territories.

**Students** gain experience using the same professional-level research database that successful companies rely on, increasing their employment prospects.

**Academics and researchers** can leverage the intelligence for independent research projects and teaching across a range of disciplines.

**Library staff** use the research to answer a broad range of enquiries.

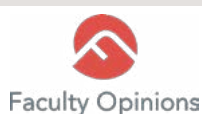
Subscriptions can be extended to educational partners and wholly owned overseas campuses with optional licence extensions.

[www.chest.ac.uk/agreements/euromonitor-passport-fe](http://www.chest.ac.uk/agreements/euromonitor-passport-fe)

[www.chest.ac.uk/agreements/euromonitor-passport-he](http://www.chest.ac.uk/agreements/euromonitor-passport-he)

Bus Subscription

## Faculty Opinions



### Faculty Opinions (Formerly F1000Prime) is a powerful literature discovery service led by a Faculty of 8,000 experts in biology and medicine

Faculty Opinions is a powerful discovery tool blending the rigor and expertise of a faculty of over 8,000 leading experts in life science and medicine with superior technology, to fuel your discovery of research with precision and confidence. The faculty provides comment, opinion and validation of key papers in their field including not only the most acclaimed studies but also the lesser-known gems that often go undiscovered.

This Agreement will be being renewed during 2022.

[www.chest.ac.uk/agreements/faculty-opinions](http://www.chest.ac.uk/agreements/faculty-opinions)

Research STEM MedSci Subscription

## Isle of Man Map Data



### Project licences for map and spatial data

The Isle of Man Government provides licences for academic projects to use their digital map data and spatial data.

In DXF or Esri compatible geodatabase formats, and other derived datasets, the data is free of charge, though users are required to declare the research or teaching project for which the data will be used.

[www.chest.ac.uk/agreements/iom](http://www.chest.ac.uk/agreements/iom)

FOC GIS

### MarketLine



MarketLine, a trading name of Progressive Digital Media Ltd, publishes profiles covering every major industry and marketplace in the world.

**This Agreement will be being renewed during 2022.**

#### MarketLine

##### Company, industry, country and financial data

MarketLine is an interactive platform, providing access to a unique and exclusive mix of company, industry, country, city and financial data. It covers most major industries from aerospace and automotive to media, mining and textiles. News, financial deals, comment, and analyst insights complement this data.

- Market data and insights
- Competitor intelligence
- Macroeconomic indicators
- Real-time intelligence

 [www.chest.ac.uk/agreements/marketline](http://www.chest.ac.uk/agreements/marketline)

Bus Subscription

#### GlobalData Explorer

NEW

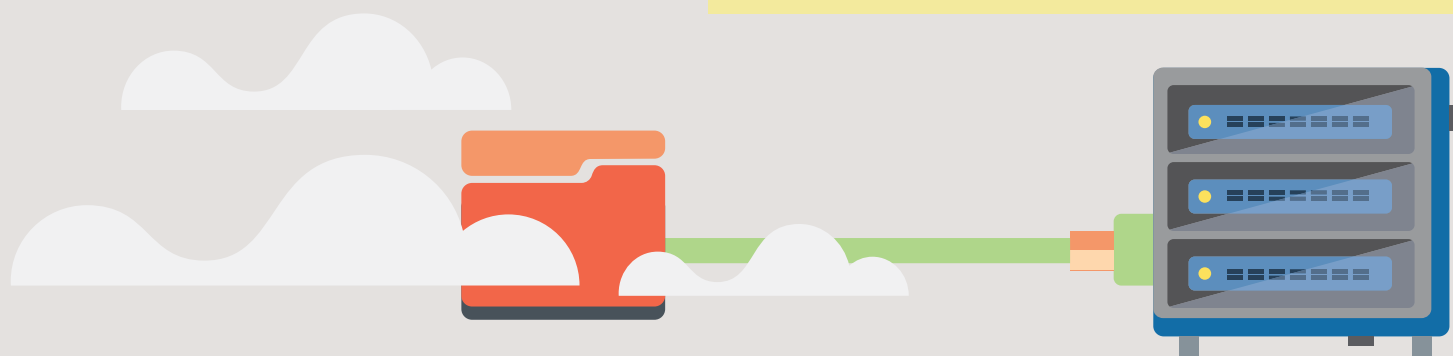
##### Newly added to the MarketLine Agreement at the start of 2022 is GlobalData's flagship 'Explorer' product

Explorer offers you broad yet detailed coverage of the global trends that are shaping industries, impacting companies and driving innovation. A versatile resource for multiple academic courses, including Business, Engineering, Finance, Automotive, Retail, Medicine, IT, Travel and Tourism and more besides. Explorer covers 22 sectors and over 120 sub-sectors, with over 15,000 reports from over 600,000 companies.

Institutions can buy Explorer as a standalone product or add it to an existing MarketLine subscription and receive additional discounts.

 [www.chest.ac.uk/agreements/marketline](http://www.chest.ac.uk/agreements/marketline)

Bus Subscription



RENEWED TO 2024

#### New Scientist Online

New  
Scientist

##### Low cost subscriptions to this leading science and technology magazine

New Scientist is the world's most popular weekly science and technology magazine. It covers international news from a scientific standpoint, and asks the bigger-picture questions about life, the universe and what it means to be human.

Readers get access to current editions and the archive back to 1989, at cheaper than direct prices.

 [www.chest.ac.uk/agreements/new-scientist](http://www.chest.ac.uk/agreements/new-scientist)

STEM Subscription

RENEWED TO 2024

#### Nielsen BookData Online

nielsen  
.....

##### Comprehensive data for English-language titles published worldwide

BookData Online UK & Ireland and International are databases of books and related products.

As well as fast and efficient search and discovery of up to date, comprehensive and content-rich product information, this service also provides the facility to order from all UK book suppliers, track orders online, and obtain real-time price and stock information.

 [www.chest.ac.uk/agreements/nielsen](http://www.chest.ac.uk/agreements/nielsen)

SysServ Subscription



RENEWED TO 2025

## OECD iLibrary



### Wide ranging research and knowledge on international development from the OECD

The OECD iLibrary is the Organisation for Economic Co-operation and Development's online library for Books, Papers and Statistics and the gateway to OECD's analysis and data. As well as its own publications, it contains all the publications and datasets released by the International Energy Agency (IEA), Nuclear Energy Agency (NEA), OECD Development Centre, Programme for International Student Assessment (PISA), and International Transport Forum (ITF).

All the content is presented so users can find – and cite – tables and databases as easily as articles or chapters.

The content from the OECD is widely used in universities and research organisations.

[www.chest.ac.uk/agreements/oecd](http://www.chest.ac.uk/agreements/oecd)

Bus Research STEM Subscription

## PressReader



### Unlimited access to thousands of magazines and newspapers from around the world

This Agreement is for PressReader's Global Publications Package. Subscribers get access to more than 7,000 of the world's top newspapers and magazines from more than 120 countries, often before they're available on shelves.

There are no limits on downloads and back issues, allowing users to read titles offline whenever, wherever. Users can instantly translate foreign language content in up to 18 languages, allowing international perspectives on topics of interest. Plus, they can share access across 5 of their devices.

PressReader's Global Publications Package includes access to up to one-year rolling archive. An extended rolling archive published from 2004 is also available.

This Agreement will be being renewed during 2022.

[www.chest.ac.uk/agreements/pressreader](http://www.chest.ac.uk/agreements/pressreader)

Bus Research STEM Subscription

## SciFinder



### Research and discovery tool for delving into multiple STEM disciplines

SciFinder, from CAS, is a research discovery application that provides integrated access to the world's most comprehensive and authoritative source of references, substances and reactions in chemistry and related sciences. Many academic researchers rely on SciFinder to keep up to date on and leverage the latest advances in science.

This is a non-standard Chest Agreement – contact Chest Help for more information.

This Agreement will be being renewed during 2022.

[www.chest.ac.uk/agreements/scifinder](http://www.chest.ac.uk/agreements/scifinder)

MedPsc Research STEM Subscription

## Sciwheel



### Award-winning technology that provides customisable, intuitive and accessible tools to progress research and discovery

Sciwheel is a new generation reference manager. It helps users to organise their research, save references on the go, add notes to web pages and PDFs, and work seamlessly across any computer, phone or tablet. Users create their own easy-to-manage library that they can access from anywhere in the world, on any device. Pricing is based on the FTE count for the institution.

This Agreement will be being renewed during 2022.

[www.chest.ac.uk/agreements/sciwheel](http://www.chest.ac.uk/agreements/sciwheel)

MedSci Research STEM Subscription



## Find out more about Chest

For more background information, visit the FAQ page [www.chest.ac.uk/frequently-asked-questions](http://www.chest.ac.uk/frequently-asked-questions). You will find a wide range of information such as how we choose products for Chest Agreements, things that you need to know if you participate in an Agreement, the role of licence contacts, legal stuff such as the Chest Standard licences, what being a Chest Site Rep means, a section on jargon busting, and what you need to consider if you want to provide access to your partners.

## How to order

All publicly funded Universities and Colleges of Further Education in the UK are eligible to subscribe to Chest Agreements. Other organisations, for example, universities and third-level colleges in Ireland, private universities, colleges, other training bodies, and not-for-profit organisations, can benefit, though this is usually at the discretion of the supplier.

Contact [help@chest.ac.uk](mailto:help@chest.ac.uk) if you would like to know if your organisation is eligible.

The first step to ordering is to register on the Chest website.

### Why register?

- Once logged in you will be able to order online
- Some content is only accessible once you are logged in
- You won't need to enter your details next time
- You can view details of the resources that your organisation is licensed for
- You can administer your own account details and preferences
- You can view suggestions that other people have made for new Chest Agreements, vote for them and suggest other products

### Who can register?

Members of staff at institutions and other organisations that are eligible to participate in Chest Agreements; people who hold an appropriate position at their organisation and are responsible for making decisions about purchasing online resources and software for use by their students and staff.

To find out more about registering see [www.chest.ac.uk/registering-on-the-chest-website](http://www.chest.ac.uk/registering-on-the-chest-website).

### Ordering

The order process is outlined at [www.chest.ac.uk/how-to-order](http://www.chest.ac.uk/how-to-order). The precise steps vary depending on the Agreement.

The most efficient way is to order online. Alternatively, download a partially completed order form and fill in the rest of the details offline, or download a blank pdf order form, complete all the details offline, and return your form as an email attachment to Chest Help: [help@chest.ac.uk](mailto:help@chest.ac.uk).

## Collaboration

The success of Chest Agreements relies on collaboration between the academic community, suppliers, and the Chest Team. Chest runs free-to-attend meetings, often in partnership with suppliers, collaborates with groups that represent the academic community such as the Academic Applications Forum, Alumni Library Forum, Business Librarians Association, National Acquisitions Group, sheriff, and the University Science and Technology Librarians Group. Chest is a member of Project COUNTER, and the UCISA Software Procurement Group.

You can find details of events here [www.chest.ac.uk/events](http://www.chest.ac.uk/events).

## Being a Chest Representative

Each university, each college, each organisation, that is eligible to license resources through Chest must nominate at least one Chest Rep (aka Site Contact). This is an important but not especially onerous role. These people are the first point of contact for Chest.

There are two types of Rep – software and library specialists:

### Software Contact

A Software Contact usually has a senior role in IT Services. This person needs a good understanding of software licensing and knowledge of the software licensed by their institution.

### Online Resource (Data) Contact

This Online Resources Contact is typically a senior librarian, an authority on online resources and the requirements of their organisation. They should have a good understanding of licensing.

More than one person can be nominated for each role; this is quite usual to ensure cover for holidays and other eventualities.

### What is their role?

Site Reps are usually responsible for making decisions to purchase Chest licences, and placing orders.

They receive the Chest Messenger newsletters and other information relating to Chest Agreements and events. It is their responsibility to circulate relevant news to their colleagues.

An important aspect of the role is to advise Chest about their institution's licence needs and if there are any licensing issues that are challenging their organisation; if we know about these things then we will do what we can to help.

Another is to review proposals for new and renewing Chest Agreements and send us any feedback.

### On the Chest website

As Chest Site Rep, once registered, you will:

- have access to restricted content – this is commercially sensitive and should not be shared with third parties
- be able to order online
- view the status of any orders
- view licence details of orders raised by yourself or colleagues
- print details of your licences
- approve other members of your organisation when they register on the Chest website – this will allow them to view restricted content and place orders

You can:

- edit your personal contact information and preferences
- change your password
- manage users at your organisation
- add users to attach to licences when you order
- remove users if they leave or change jobs
- upgrade another user to Chest Rep so that your organisation has more cover or if you need to resign as Chest Rep

It's now easy to update contact information and preferences and help Chest to keep your records up to date.

We advise that you read the Chest Privacy Notice at [www.chest.ac.uk/privacy-notice](http://www.chest.ac.uk/privacy-notice) to learn how we respect your personal information.

In addition, please read the Chest Data Processing Agreement at [www.chest.ac.uk/chest-data-processing-agreement](http://www.chest.ac.uk/chest-data-processing-agreement) which applies to universities, colleges and other organisations which are eligible to participate in Chest Agreements. This is required to ensure compliance with GDPR Regulations.

# Agreements A-Z

Agreement	Type	Purchase Type	Agreement End Date	Licence	Invoice source	Invoice Date	Page No.
<b>Adobe ETLA</b>	Software	Subscription	13/08/22	Adobe	Jisc	Varies	7
<b>Adobe Linked VIP</b>	Software	Subscription	Rolling	Adobe	n/a	n/a	7
<b>Adobe Master CLP</b>	Software	Perpetual	05/05/23	Adobe	n/a	n/a	7
<b>Adobe Student ETLA</b>	Software	Subscription	13/08/22	Adobe	Jisc	Varies	7
<b>AMS Journals</b>	Online Resource	Subscription	31/12/22	Chest	Jisc	01-Oct	17
<b>AMS MathSciNet</b>	Online Resource	Subscription	31/12/22	Chest	Jisc	01-Oct	17
<b>AMS Memoirs</b>	Online Resource	Perpetual	31/12/22	Chest	Jisc	n/a	17
<b>APA Books E-Collections and Handbooks</b>	Online Resource	Perpetual	31/07/23	APA	Jisc	01-May for access fee	18
<b>APA PsycArticles</b>	Online Resource	Subscription	31/07/23	APA	Jisc	01-May	18
<b>APA PsycBooks</b>	Online Resource	Subscription	31/07/23	APA	Jisc	01-May	18
<b>APA PsycExtra</b>	Online Resource	Subscription	31/07/23	APA	Jisc	01-May	19
<b>APA PsycInfo</b>	Online Resource	Subscription	31/07/23	APA	Jisc	01-May	19
<b>APA PsycTests</b>	Online Resource	Subscription	31/07/23	APA	Jisc	01-May	19
<b>APA PsycTherapy</b>	Online Resource	Subscription	31/07/23	APA	Jisc	01-May	19
<b>Brill Bespoke Packages</b>	Online Resource	Subscription	31/12/24	Chest	Jisc	01-Oct	20
<b>Brill eBook Collection</b>	Online Resource	Perpetual	31/12/24	Chest	Jisc	n/a	20
<b>Brill Hague Academy Collected Courses Online</b>	Online Resource	Subscription / Perpetual	31/12/24	Chest	Jisc	01-Oct	20
<b>Brill Online Reference Works and Databases</b>	Online Resource	Subscription	31/12/24	Chest	Jisc	01-Oct	20
<b>COBRA</b>	Online Resource	Subscription	31/12/23	Chest + special terms	Jisc	3 months before anniversary	21
<b>Compendex and EI Backfile</b>	Online Resource	Subscription / Perpetual	07/12/23	Chest	Jisc	08-Sep	21
<b>Emerald eBooks Select</b>	Online Resource	Subscription	31/12/23	Chest	Jisc	01-Oct	22
<b>Emerald eCase Collection</b>	Online Resource	Subscription	31/12/23	Chest	Jisc	01-Oct	22
<b>Emerald Emerging Market Case Studies</b>	Online Resource	Perpetual	31/12/23	Chest	Jisc	n/a	22
<b>Emerald Expert Briefings</b>	Online Resource	Subscription / Perpetual	31/12/23	Chest	Jisc	01-Oct	22
<b>Emerald Gold Open Access APC Bundles</b>	Online Resource	Purchase	31/12/23	Chest	Jisc	n/a	22
<b>Emerald Subject Collections FE</b>	Online Resource	Subscription	31/12/23	Chest	Jisc	01-Oct	22
<b>Emerald Subject Collections HE</b>	Online Resource	Subscription	31/12/23	Chest	Jisc	01-Oct	22
<b>ESDU</b>	Online Resource / Software	Subscription	31/10/22	Chest + special terms	Jisc	01-Aug	8/23
<b>Esri</b>	Software	Subscription	31/07/23	Esri + special terms	Jisc	01-May	8
<b>Euromonitor Passport for FE</b>	Online Resource	Subscription	31/03/25	Chest + special terms	Jisc	01-Jan	23
<b>Euromonitor Passport for HE</b>	Online Resource	Subscription	31/03/25	Chest + special terms	Jisc	01-Jan	23

Agreement	Type	Purchase Type	Agreement End Date	Licence	Invoice source	Invoice Date	Page No.
Examity	Software	Purchase	30/04/23	Chest	Jisc	n/a	9
Faculty Opinions	Other	Subscription	30/09/22	Chest	Jisc	01-July	23
Flexera	Software	Subscription	30/09/23	Flexera + special terms	Flexera	n/a	9
Hexagon Geospatial	Software	Subscription	31/07/24	Chest	Jisc	01-May	9
Isle of Man Map Data	Online Resource	Perpetual (FOC)	Rolling	Special	FOC	n/a	23
License Dashboard	Software	Subscription	31/12/24	Chest	Jisc	3 months before anniversary date	10
Maplesoft	Software	Subscription	30/04/23	Chest	Jisc and Maplesoft	1 month before anniversary date	10
Maple Learn for FE & Schools	Software	Subscription	30/04/23	Chest	Maplesoft	1 month before anniversary date	10
MarketLine	Online Resource	Subscription	31/07/22	Chest + special terms	Jisc	01-May	24
Microsoft EES EQU	Software	Subscription	31/12/23	Microsoft	Jisc for participation fee only	n/a	11
Microsoft Select Plus	Software	Subscription / Perpetual	31/12/23	Microsoft	n/a for Microsoft EES participants	n/a	11
MindGenius	Software	Subscription	31/10/23	Chest	Jisc	3 months before anniversary date	12
NAG	Software	Subscription	31/07/25	Chest	Jisc	01-May / 01-Feb (for Early Bird)	12
New Scientist Online	Online Resource	Subscription	30/09/24	Chest	Jisc	01-July	24
Nielsen BookData Online	Online Resource	Subscription	31/07/24	Chest	Jisc	01-May	24
Noteable	Software	Subscription	29/11/23	Chest	Jisc	3 months before anniversary date	12
OECD iLibrary	Online Resource	Subscription	31/01/25	Chest	Jisc	01-Nov	25
OpenText	Software	Subscription	31/07/26	Chest	Jisc	01-May	12
OxMetrics	Software	Subscription	31/01/24	Chest	Jisc	3 months before anniversary date	13
Practice Labs	Software	Subscription	31/01/24	Chest	Jisc	3 months before anniversary date	13
PressReader	Online Resource	Subscription	31/12/22	Chest	Jisc	3 months before anniversary date	25
Prolifiko	Other	Purchase	30/09/22	Chest	Jisc	n/a	13
ProWritingAid	Software	Subscription	31/01/24	Chest	Jisc	3 months before anniversary date	13
QSR Citavi	Software	Subscription	30/06/22	Chest + special terms	Jisc	3 months before anniversary date	14
QSR NVivo	Software	Subscription	30/06/22	Chest + special terms	Jisc	3 months before anniversary date	14
QSR Nvivo Collaboration Cloud	Software	Subscription	30/06/22	Chest + special terms	Jisc	n/a	14
QSR Nvivo Transcription	Software	Subscription	30/06/22	Chest + special terms	Jisc	n/a	14
SAS	Software	Subscription	31/07/23	SAS	Jisc	01-May	15
SciFinder	Online Resource	Subscription	30/09/22	CAS	CAS	n/a	25
SciWheel	Online Resource	Subscription	30/09/22	Chest	Jisc	01-Jul	25
Snow Software	Software	Subscription	31/10/24	Chest + special terms	Jisc	3 months before anniversary date	15
Verbit	Software	Subscription	31/12/24	Chest	Jisc	Upon receipt of order	15



## About Chest

Chest is a Jisc enterprise. The Team at Chest negotiate preferential licence agreements for software and online resources for the academic sector.

### Get in touch

Tel: **+44(0)300 121 0878**

Email: **[help@chest.ac.uk](mailto:help@chest.ac.uk)**

Postal address: **Chest,  
4 Portwall Lane, Bristol, BS1 6NB**

Twitter: **@ChestAgreements**

**[www.chest.ac.uk](http://www.chest.ac.uk)**

Jisc is a company limited by guarantee, registered in England (company number 5747339), and a registered charity (charity number 1149740), whose registered office is 4 Portwall Lane, Bristol, BS1 6NB. T: 0203 697 5860.

VAT No: GB 197 0632 86. OpenAthens and Chest are Jisc enterprises operating from 4 Portwall Lane, Bristol, BS1 6NB.