

Chest Agreements 2020

Software
Online Resources

Licences for Universities, Colleges
and the Research Sector in the UK
and the Republic of Ireland



Introduction

Welcome to the 2020 Chest Agreements Catalogue

Chest Agreements are contracts with suppliers of commercially available software and online resources. They guarantee licence pricing and terms and conditions. Education and research communities in the UK and the Republic of Ireland can take part.

Chest Agreements saved an estimated £79 million in licence fees and efficiency savings in 2018/19.

There are more than 70 Chest Agreements from around 40 vendors.

Software Agreements cover products widely used in teaching and research, as well as administrative functions, and can be used to benefit the entire institution. They include:

- software from Microsoft and Adobe
- software in specialist areas such as GIS, statistics and maths, qualitative data analysis, mind mapping and more
- tools for software asset management and security

Online Resource Agreements include all types of digital resources: from eJournals, eBooks, backfiles, databases, reference materials, standards, to videos... and more.

In 2019 we introduced 7 new Agreements:

- **De Gruyter Databases** of special collections of primary sources, text collections, reference works, and bibliographies in the sciences.
- **F1000Prime and F1000Workspace** solutions to support researchers in discovering content, organising their research and collaborating with others.

- **IET eBooks collections** offering titles across a range of engineering and technology disciplines.
- **MarketLine Chartbooks** which provide visual analysis of global company, city, company and industry data exclusively to FE colleges.
- **Prolifiko** which offers coaching and digital support tailored to developing the writing skills of academics and researchers.
- **NVivo Transcription** software which provides verbatim transcription of audio files releasing researchers to focus on analysis of their data.
- **World Trade Organisation's iLibrary** offering the WTO's key research material on global trade in one place.

Working for you, with you

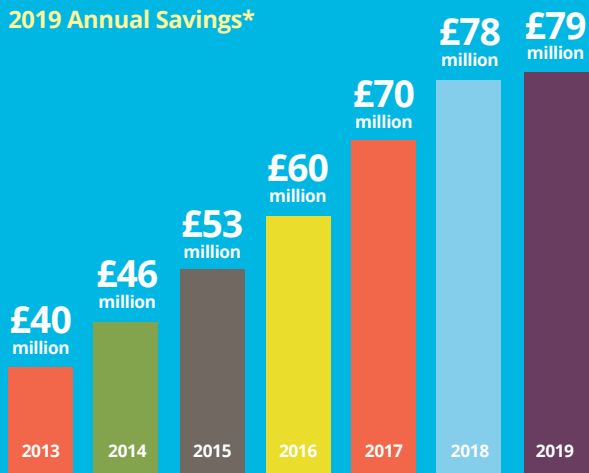
The continuing success of Chest relies on the support of our customers. They take the time to:

- provide constructive feedback on Agreement proposals,
- suggest new resources to investigate,
- attend meetings,
- complete surveys, and
- much more...

So a huge thank you to you all.

We look forward to working with and for you in 2020.

2019 Annual Savings*



*The method we use to calculate the savings compares the prices available under the Chest Agreements with the prices otherwise payable outside of them. Chest obtains the prices from the suppliers and other sources. Included in the savings is an estimate of the process time saved by institutions by not having to undertake negotiations themselves. The Higher Education Funding Council for England (HEFCE) approved the methodology some years ago and we continue to use the same approach today.

Getting in touch

Questions?

Please contact Chest Help:

Tel: **0300 121 0878**

(calls to 0300 numbers are charged at local rate)

Email: help@chest.ac.uk

Staying in touch

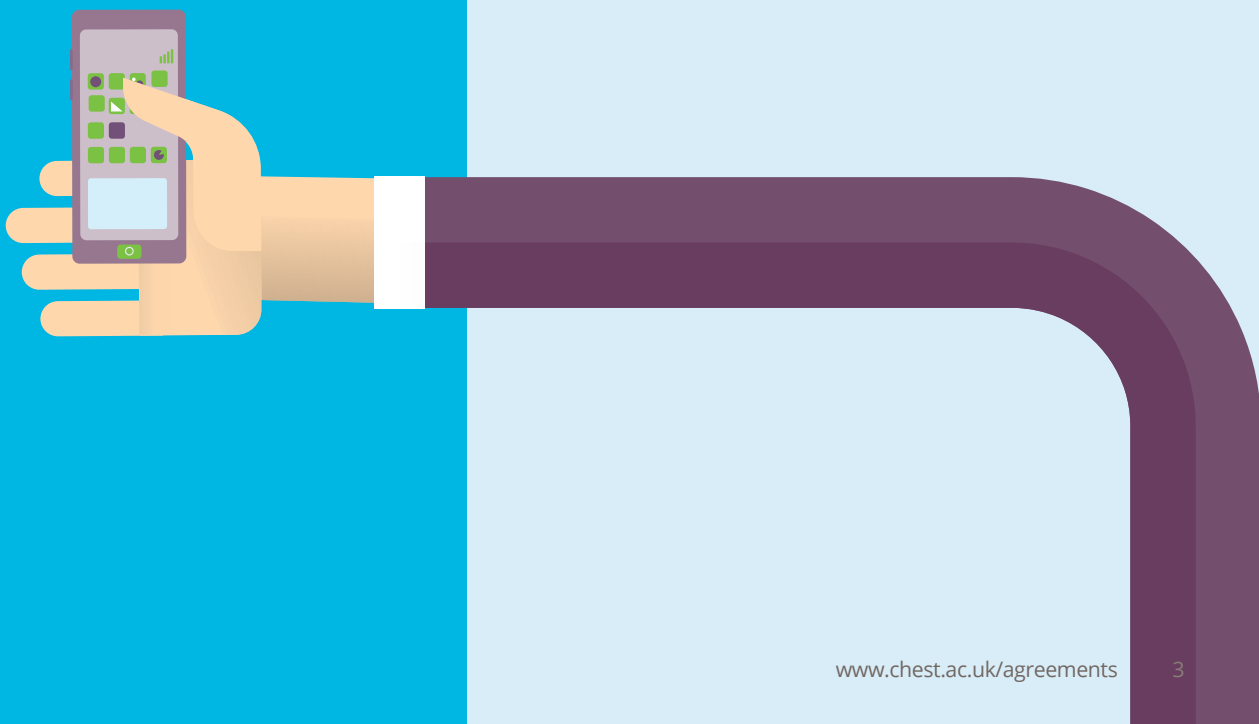
To join our mailing list for the latest news, event information and resources simply provide your email address in the form at the foot of the Chest website.

Request a Catalogue

If you would like additional copies of this catalogue to share with colleagues, please email: help@chest.ac.uk

Table of contents

Getting in touch	3
Other aspects of 2019	4
Keys to the Agreements	4
More about Chest Agreements	5
Software Agreements	6
Online Resource Agreements	16
Find out more about Chest	29
How to order	29
Collaboration	29
Being a Chest Representative	29
Agreements A-Z	30
(including type of purchase/subscription, Agreement end dates, Licence and Invoice details)	



Other aspects of 2019

Agreement renewals completed:

- Adobe Master CLP Framework
- Adobe Student ETLA renewal
- AMS MathSciNet, eJournals and Memoirs
- Commonwealth iLibrary
- ESDU
- Euromonitor
- License Dashboard
- MarketLine
- New Scientist
- OECD iLibrary
- Sustainable Organization Library
- Thieme Journals Backfile
- United Nations iLibrary

Coming soon – negotiations for these Agreements started in 2019:

- APA renewal
- Emerald: Expert Briefings Powered by Oxford Analytica – new!
- Esri renewal
- NAG renewal
- SAS Viya to be added to SAS Agreement
- Snow renewal
- Springer Nature Lecture Notes renewal

Key to the Agreements

Agreement categories

ArtsHum – Arts and Humanities

Bus – Business, Economics, Management and Law

Creative – Creative, Graphics, Media

GIS – Geographical Information Systems, geospatial data and maps

MedPsyc – Medicine, Health and Psychology

Research – Research and Analytic Tools and Reference Works

SocSci – Social Sciences

STEM – Science, Technology, Engineering, Maths including statistics and analysis

SysServ – Systems and Services

Licence terms

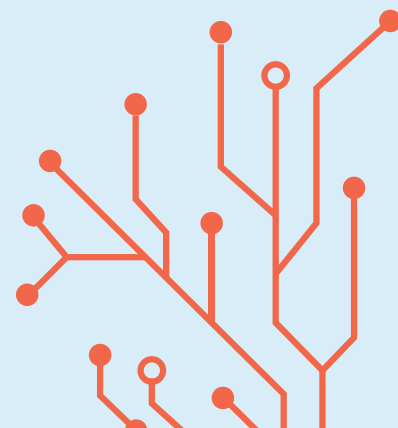
Subscription – multi-year subscriptions, usually paid annually, provide the right to use the products that you licence during the licence period. Software assurance/maintenance/product updates are usually included at no extra charge. Typically, you may not use the resources once your subscription expires unless the licence is renewed.

Perpetual – you purchase the resources outright and have perpetual use rights once the supported licence period ends. Most providers offer optional maintenance programmes to ensure that your resources are kept up to date or that you can continue to access the latest versions.

Maintenance – maintenance or software assurance, or ongoing access fees are available under the Chest Agreement.

Home use – this term is used usually for software that can be deployed on staff and/or students' personal computers. Check the website for specific details.

Alumni – remote access available for alumni – other restrictions or additional charges may apply. Check website for details.



More about Chest Agreements

What are Chest Agreements?

A Chest Agreement is a contract that guarantees licence pricing and terms and conditions for valuable software and online resources, negotiated on behalf of the education and research communities in the UK and the Republic of Ireland.

In 2018/19 Chest Agreements saved the academic community an estimated £79 million in licence fees and in efficiency savings.

Features of a typical Chest Agreement

Preferential terms and conditions	Guaranteed pricing	Licence
Standard licence	Transparent, fixed, banded	Between the institution and the vendor or service provider
Based on UK Law	Usually over 3-year term	Site licences cover use by all staff and students
Consistent and easy to understand language	Opt-out options or one year licences are common	Use for administration and management allowed

Other benefits:

- The guaranteed pricing simplifies budgeting.
- Pricing is often banded or tiered according to numbers of students or staff.
- Many agreements offer flexible licensing options to meet different requirements and budgets.
- Support is included in the price.
- All users have access to the latest version or the most up to date content.



Software





Adobe Creative Software

Adobe tools empower students to think creatively and communicate expressively and gain invaluable skills that will help set them apart in the job market. The Adobe Chest Agreements provide a range of cost-effective ways for universities and colleges to bring the technology and creativity to the classroom and provide teachers with what they need to teach digital media skills.

Adobe ETLA

Subscriptions and maintenance for Adobe's Creative Cloud Desktop Apps

This Enterprise Term Licence Agreement allows institutions to install Adobe Creative Cloud Desktop Apps on all the PCs/Macs that they own or operate. The software can be used by staff and students. Creative Cloud Enterprise Edition is available for staff to use on their own PCs/Macs. The cost is based on your staff FTE.

With enterprise level support directly from Adobe and an Admin portal, it's easy to deploy the right apps and services by user, group, or across the enterprise.

ETLA is the only agreement from Adobe that allows virtualisation and provides multiple language support.

The next opportunity to join is in May, with your licence starting in August.

www.chest.ac.uk/agreements/adobe-etla

Creative Subscription Maintenance Home use

Adobe Linked VIP

Flexible volume subscription licensing for the latest versions of Creative Cloud

The Value Incentive Plan (VIP) offers a cost-effective way to deploy the right tools to the right people. Licences can be:

- used for administrative purposes
- bought on an ad-hoc basis
- purchased for departmental or
- in limited quantities for students' labs.

Chest consolidates purchases to achieve the highest levels of discount available for all participants. The individual institutions maintain control of deployment and management of their licences under their own Value Incentive Plans. There are four levels of discount based on the number of licences purchased.

The annual fee to join the scheme is £0.

www.chest.ac.uk/agreements/adobe-vip

Creative Subscription

RENEWED

Adobe Master CLP

Perpetual Licences for Adobe's most popular desktop products

The Cumulative Licensing Program (CLP) is a two-year membership licensing program in which universities and colleges can purchase perpetual software licences and optional upgrade plans for some of Adobe's most popular desktop products. These include Acrobat Pro, Captivate, ColdFusion and Director. It doesn't matter how small your organisation or your order – through the Chest scheme everyone gets the highest level of discount from the start.

The annual fee to join is £0.

www.chest.ac.uk/agreements/adobe-clp

Creative Perpetual

RENEWED

Adobe Student ETLA

Bulk purchase Creative Cloud Licences for students' own machines

Universities, colleges and sixth form colleges can bulk purchase Adobe Creative Cloud Licences for their students to install on their own PCs/Macs and mobile devices. The licence includes Adobe Creative Cloud desktop applications, mobile applications and cloud services. Minimum purchase numbers apply.

The Agreement offers two entry points each year; the most recent being 14 February and the next expected on 14 August 2020.

www.chest.ac.uk/agreements/adobestudentetla

Creative Subscription Home use – for students

Savings

Institutions in the UK and Ireland will have saved over £110 million during the previous three years of our Adobe ETLA Agreement. The Agreement also gives many sites access to a site licence that they would normally be too small to obtain.

Adobe Focus Group

All participants in the Adobe Agreements are welcome to attend meetings. There are usually two per year. See Software Messenger and www.chest.ac.uk/events for details. For news join the mailing list – email chest-adobe@jiscmail.ac.uk including 'SUBSCRIBE forename surname' within the body of your message.

DigitalEd

DigitalEd

Improve student learning outcomes with Möbius online testing and assessment system designed especially for STEM

Möbius is an online testing and assessment system designed for courses involving mathematics. Powered by Maple™ software, it is ideal for assessing student understanding of maths-based concepts.

Teachers can create their own courses using the intuitive authoring tools or customise and deploy the content and lesson material included in Möbius. They will gain more insight into their students' understanding of maths concepts and more time to support individuals progress.

Interaction, immediate feedback, continuous testing and automatic grading all help students to gain deeper understanding.

www.chest.ac.uk/agreements/digited

STEM Subscription



ENVI

Provide your students and researchers with the tools they need to learn about geospatial imagery and complex numerical data

ENVI Image analysis software from L3Harris Geospatial is used by GIS professionals for geospatial analysis and spectral image processing.

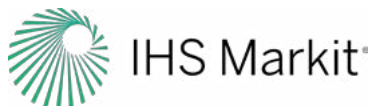
The Chest Agreement offers an unlimited site licence for ENVI, plus optional modules to extend its functionality and tools for programming and analysing SAR data. ENVI products are integrated with ArcGIS® from Esri.

Universities use ENVI for cutting-edge research and to prepare students for careers in commercial, government and defence industries. Tutorials and a robust help section are included.

www.chest.ac.uk/agreements/envi

GIS Subscription Home use

ESDU



The knowledge and experience of hundreds of engineers for your students

ESDU provides validated engineering design methods, empirical and theoretical data, worked examples and software tools that address a wide range of engineering disciplines. Much of the information is often only available through ESDU.

Many universities use ESDU in their curriculum to equip students with the necessary tools and knowledge used in industry by:

- including data into lecture notes, handouts, and visual aids
- setting coursework assignments that use ESDU data and/or software
- setting project work that uses the industrial methods.

www.chest.ac.uk/agreements/esdu

STEM Subscription Home use

Esri UK



Equip your students with GIS data visualisation and spatial analysis skills

Esri's ArcGIS desktop, web and mobile apps are used by staff and students for teaching, research, estate management and reducing operational costs.

ArcGIS is a fully integrated suite software for mapping, analysing, and sharing data.

Due for renewal in August 2020 negotiation for this popular agreement is already underway. There will be flexible options to suit all requirements.

Once equipped with data visualisation and spatial analysis skills, your students will qualify for occupations in countless fields.

www.chest.ac.uk/agreements/esri

GIS Subscription Home use – for staff and students within the UK and Ireland

Esri UK Annual Conference 2020

Tuesday 19 May 2020
QEII Conference Centre, London

See What Others Can't

Bringing together over 2,500 GIS enthusiasts, from a wide range of industries, to share knowledge and expertise at a sensational event you won't want to miss!



Hexagon Geospatial

Geospatial image processing, photogrammetry, GIS and server technologies

Hexagon Geospatial Essentials - image processing capability perfect for teaching vector and raster geospatial analysis at a basic level.

Hexagon Geospatial Desktop Imaging - an image processing suite including ERDAS IMAGINE and ER Mapper, for collecting, processing, analysing and understanding geospatial data. It integrates with other tools such as ArcGIS.

Hexagon Geospatial Desktop GIS - a complete GIS system for aggregating data from a variety of sources and analysis.

Hexagon Geospatial Enterprise offers huge capability for those wishing to teach and undertake research using industrial quality geospatial software.

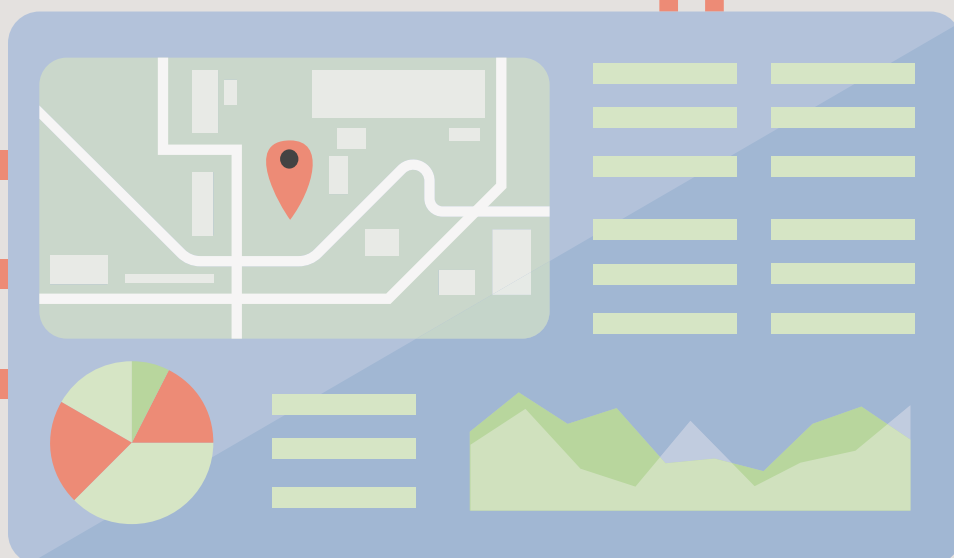
Smart M.Apps are simple to use, lightweight dynamic map applications that present analytic information in a visual and compelling way.

 www.chest.ac.uk/agreements/hexagon

[GIS](#) [Subscription](#) [Home use](#)

Discover Hexagon Geospatial U

Hexagon Geospatial U is an online community for all Hexagon Geospatial university educators, containing thousands of pages of curriculum including presentations for lectures, lecture notes, example data and step-by-step tutorials for students to follow for lab exercises. The curriculum materials are available to download and use as is or as a template with local datasets.



License Dashboard



Innovative and adaptive solutions that track and manage software assets

License Dashboard will help you establish, understand, optimise and manage your software licences. All of which can lead to savings of up to 30% in overall IT spend.

The License Dashboard Chest Agreement offers License Manager, LD Portal and LD ScanWin, plus optional extras, in a tiered proposition to suit institutions of all sizes.

License Manager is a powerful, easy-to-use platform which allows organisations to accurately manage software licences.

License Dashboard Portal helps organisations share software asset and usage information with people outside of the SAM team.

ScanWin is a utility used to check Windows devices without the need to deploy an agent.

www.chest.ac.uk/agreements/licensedashboard

SysServ Subscription

Maplesoft



High-performance software tools for engineering, science, and mathematics

Maple helps to make maths easier to learn, understand, and use. It combines the world's most powerful maths engine with an interface that makes it extremely easy to analyse, explore, visualise, and solve mathematical problems. It is an ideal tool for both education and research.

Maple Grid Computing Toolbox enables Maple computations in parallel, on all your hardware resources.

MapleSim is an advanced modelling tool for complex engineering design projects.

MapleSim Connector for FMI (Functional Mockup Interface) allows sharing of high-fidelity, multidomain models created in MapleSim with other modelling tools.

www.chest.ac.uk/agreements/maplesoft

STEM Subscription Home use



“Chest provides good value. Not just on pricing but on T&Cs. They are also an accepted route to market so they save on procurement effort.”

Kevin Hopkins, Software Licensing Manager, University of Nottingham



Microsoft Education Solutions



Easy, cost-effective licensing and software assurance on-premises, in cloud and hybrid IT environments such as Office, SharePoint, SQL Server and Exchange, operating systems such as Windows Server and Windows Desktop Upgrades. These programmes provide an EU compliant procurement route through a choice of resellers that are on the National Framework Agreement for Software Resellers.

Microsoft EES Education Qualified User

Affordable volume-based licensing for enterprise desktop products

Just one annual count of Education Qualified Users* avoids complex calculations of staff FTE numbers and makes licence compliance easier.

This agreement displays the benefits of aggregated purchasing as all institutions, with more than 100 EQUs, benefit from the preferential pricing usually only available to sites with more than 3,000 EQUs.

Participants can expect savings of around 7% for sites with more than 1,000 EQUs and 17% for sites with less than 1,000 EQUs.

* An Education Qualified User or EQU is any employee or contractor (not students) who accesses or uses Microsoft for the benefit of the institution.

[.../agreements/microsoft-ees-education-qualified-user](#)

Subscription

Home use

Microsoft Select Plus

Perpetual purchasing of desktop and server products

For academic customers who purchase software licences in quantity and manage software across multiple devices, this Agreement offers a cost-effective and efficient way to buy.

By enrolling in this scheme universities and colleges can purchase perpetual licences for Microsoft desktop products, in addition to server software such as SQL Server, SharePoint, Exchange and Windows Server.

Other benefits include:

- free to join for members of Chest Microsoft EES EQU Agreement
- ability to buy single licences – there's no need to commit to buy in volume
- availability of software assurance

[www.chest.ac.uk/agreements/microsoft-select-plus](#)

Perpetual

Maintenance

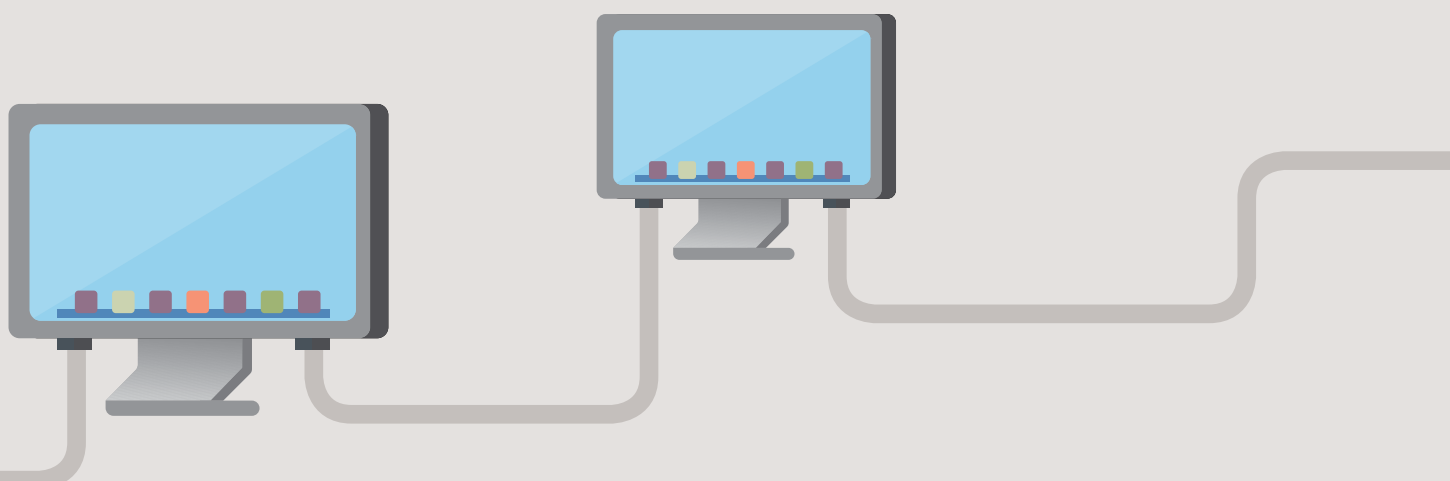
Microsoft Special Interest Group

All participants in the Chest Microsoft Agreements are welcome to attend meetings of this group. We hold one or two meetings per year. Check the events section on the Chest website for details.

www.chest.ac.uk/events

Microsoft EES Savings

The unique Chest Microsoft EES EQU Agreement saves UK universities and colleges in excess of £1.8 million per year.



MindGenius



Capture and visualise ideas and information, share and collaborate

MindGenius helps students and lecturers to improve their study and research techniques.

Visualising ideas helps all types of user to develop understanding of any topic as they build links between ideas and information.

Mind maps provide a good basis for essay writing, developing dissertations, preparation of class presentations and lesson planning.

MindGenius contains functionality to help with studying and managing tasks and projects.

www.chest.ac.uk/agreements/mindgenius

[Research](#) [Subscription](#) [Perpetual](#) [Maintenance](#) [Home use](#)

NAG



Enhancing learning and enabling cutting-edge research in maths and high-performance computing

NAG resources are used to solve complex mathematical problems in a diverse range of mathematical areas such as financial analysis, business analytics, science, engineering and research.

The NAG Library is a collection of high quality, robust, documented, tested and maintained mathematical and statistical algorithms. It is available for use with a variety of programming languages, platforms and operating systems.

NAG also produces the NAG Fortran Compiler which offers improved code portability and detailed error reporting.

www.chest.ac.uk/agreements/nag

[STEM](#) [Bus](#) [Subscription](#) [Home use](#)

NAG encourage students by sponsoring PhD candidates, offering student placements and internships and work experience positions. They recognise and reward exceptional talent through their NAG Student Award Programme.

OpenText



Fast, reliable access to a variety of enterprise applications

OpenText products provide access to a variety of enterprise applications, including host systems such as UNIX and Linux, Microsoft Windows, mainframes, network file systems and more.

OpenText Exceed – connects Windows desktops to graphical applications running X Window hosts.

OpenText Exceed 3D – provides remote access for 3D OpenGL Applications.

OpenText Exceed OnDemand – thin-client remote access to X Window applications and desktops.

OpenText HostExplorer – terminal emulator Windows software.

OpenText NFS Solo and Server – access NFS resources from Microsoft Windows PCs.

OpenText Secure Shell – security protocols to protect data traffic over open networks.

OpenText Business Intelligence – query and reporting solution.

www.chest.ac.uk/agreements/opentext

[SysServ](#) [Subscription](#)

NEW

Prolifiko

Prolifiko

Improving the writing and publishing productivity of academics and researchers

Writing and publishing is vital to scholarly success and institutional reputation.

Prolifiko offers coaching and online workshops for your academics that help to combat the blocks and barriers to writing.

Prolifiko Digital Productivity Package: six-months' access to the Prolifiko Digital productivity platform and an online writing productivity coaching course.

Prolifiko Digital plus Tailored Workshop: a six-month subscription to Prolifiko Digital, an online course, and a live expert-led workshop/webinar and Q&A tailored to the needs of Licensor's authors.

Writing Productivity Workshop: a face-to-face workshop delivered on-campus by productivity experts. Content is tailored and includes practical exercises and on-site advice.

Consultancy/White-labelled Content: Prolifiko designed and developed faculty and researcher development training, or bespoke productivity content such as email and/or video courses or webinars.

www.chest.ac.uk/agreements/prolifiko

Research

Subscription



"Chest has saved us significant amounts of money! Plus we get some additional benefits from the large purchasing power you have that we wouldn't get on our own."

Daniel Loughlin, IT Director, Esher College



QSR



QSR International is a qualitative research software developer with offices in North America, the UK, Japan and Australia. Their qualitative and mixed-methods data analysis software tools are used by academics and professional researchers globally, helping them to make sense of data – text, videos, social media and more.

NVivo



#1 software chosen by academics for qualitative research

NVivo is ideal for complex research projects, whether working solo or in a team.

Store and organise

Store and sort data in one platform, from quantifiable demographic information to qualitative open-ended questions and interviews.

Categorize and analyse data

Automatically sort sentiment, themes and attributes in seconds. Quickly exchange data with SPSS for further statistical analysis.

Visualize and discover

Cross tabulate mixed methods data and visualize the results to brainstorm and map ideas, explore connections between items and discover new paths of investigation.

There is a special classroom licence for FE Colleges.

www.chest.ac.uk/agreements/nvivo

- Research
- Subscription
- Home use

NEW



NVivo Transcription

Automated transcription assistant integrated into NVivo – quick, easy, precise

NVivo Transcription is offered as a pay-as-you-go service or an annual commitment paid quarterly.

60% of NVivo users are spending hours manually completing their own transcription, taking vital time away from data analysis and core research. Others may enlist the help of a research assistant which can be an overwhelming, time-consuming and expensive task.

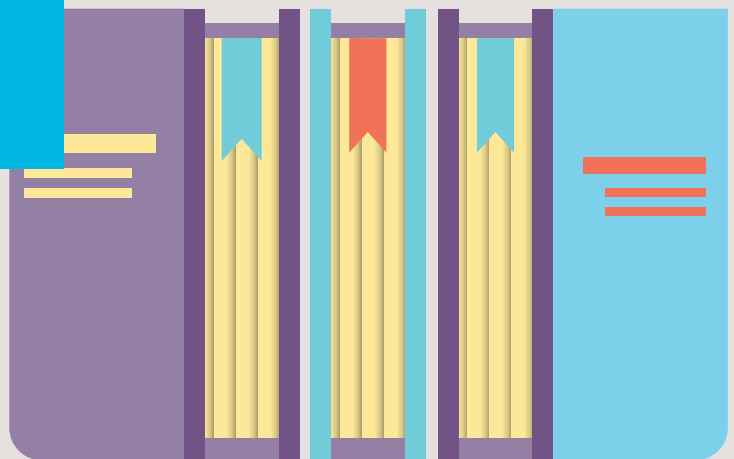
With NVivo Transcription researchers simply upload their audio file and let the software do the rest. With good quality audio, they can expect up to 90% accuracy and a file transcribed in a timespan of half the length of the audio. They can then make amendments, notes and tag speakers using the specialised editor and directly import transcribed files into NVivo 12.

www.chest.ac.uk/agreements/nvivo-transcription

- Research
- Perpetual
- Home use

Free NVivo Certification Training

Any institution signing up to or renewing their licence with QSR NVivo is entitled to two free credits per Licence Year to enable nominated staff members to train to become NVivo Certified Experts.



SAS



Prepare your students and researchers to meet the increased demand for advanced analytics skills

SAS Analytics skills are highly sought after in today's employment market.

The Education Analytical Suite for teaching and academic research integrates several commonly used SAS Analytics foundation software products in a bundle. There are options to add additional individual products from SAS's Advanced Analytics, and the Business Intelligence Technologies, Groups.

The flexible licensing options are designed to meet the distinct needs of departments, schools/faculties or an entire campus.

Users get free access to SAS' award-winning e-learning courses as part of their licence.

www.chest.ac.uk/agreements/sas

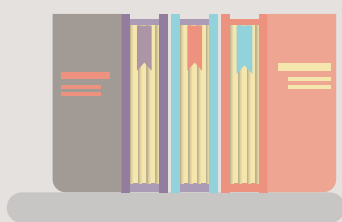
STEM

Bus

Subscription

Home use

With free access to the **SAS Joint Certificates Programme** included with their SAS licence universities can prepare their staff to support students who intend to research or work in a data-rich business environment and help bridge the analytic skills gap.



Snow



Drive down software costs and ensure licence compliance

Agreement renewing soon – keep an eye on the website and Messenger for updates.

Snow License Manager gives a unified view of hardware and software assets and usage metrics.

The current Chest Agreement offers a unique academic unlimited site licence with banded pricing for the core package consisting of five products:

- Snow License Manager
- Snow Automation Platform
- Snow Inventory
- Snow Software Recognition Service
- Snow Virtualization Management

It also extends a range of bolt-on options to provide a comprehensive and cost-effective SAM solution tailored specifically for universities, colleges and more.

www.chest.ac.uk/agreements/snow

SysServ

Subscription

TermSet



Data compliance and improving document discovery

Two products created by UK company TermSet, now part of CoreView, are helping organisations to manage their GDPR sensitive data compliance and automatically apply metadata and taxonomies to documents within Microsoft SharePoint

ScanR is used to discover and report on GDPR Personal Identifiable Information (PII) within structured and unstructured documents stored in multiple systems. It will produce reports and can be used to automate the process for responding to 'Right to be Forgotten' and Subject Access Requests.

TagR automatically applies metadata and taxonomies to documents stored within Microsoft SharePoint, so enriching searches and aiding large complex content migrations to SharePoint O365.

www.chest.ac.uk/agreements/termset

SysServ

Subscription

Online Resources





American Mathematical Society

The AMS, founded in 1888 to further the interests of mathematical research and scholarship, serves the mathematical community through its publications, meetings, advocacy, conferences and other programs.

AMS eJournals

RENEWED

Mathematics eJournal backfiles from 1891 covering a broad range of mathematics

AMS journals backfile titles include:

- The Journal of the AMS, Mathematics of Computation;
- Proceedings, Transactions, and Memoirs of the AMS;
- Transactions of the Moscow Mathematical Society;
- Theory of Probability and Mathematical Statistics;
- St. Petersburg Mathematical Journal and Sugaku Expositions.

The subscription price depends on the number of participants.

www.chest.ac.uk/agreements/ams-journals

STEM Subscription

AMS MathSciNet

RENEWED

Reviews, abstracts and bibliographic information for mathematical sciences literature

MathSciNet is a searchable database of reviews, abstracts and bibliographic information of mathematical sciences literature, dating back to the early 1800s. Over 125,000 new items are added each year, and most is classified according to the Mathematics Subject Classification.

New subscribers help to reduce the cost for all participants and benefit from lower charges in their first and second year.

Sign up after 1 March for 2020 and get free access from 1 July to 31 December.

www.chest.ac.uk/agreements/mathscinet

STEM Subscription

AMS Memoirs of the AMS

RENEWED

Purchase these pure and applied mathematics backfiles

This series is devoted to the publication of research in all areas of pure and applied mathematics. The Agreement offers the opportunity to purchase a moving backfile, dating from 1950, for a one-time fee and top-up on an annual basis.

www.chest.ac.uk/agreements/memoirs-of-ams

STEM Perpetual

"We know where we stand with Chest Agreements regarding licence terms. We know the pricing and it's clear and transparent."



Helen Rhodes, School of Management Librarian, University of Bath





American Psychological Association

Negotiations for the renewal of the Agreement with APA from August 2020 are well underway. All the following resources will continue to be available by subscription or to buy until 31 July 2020. Check the Messenger and website for news.

APA is a leading scientific and professional organisation whose mission is to advance the creation, communication and application of psychological knowledge to benefit society and improve people's lives. A range of publications and collections are available covering topics ranging from Addictions, Anxiety, Children, Depression, Ethics, Race, Sexuality, Stress, Therapy, Workplace Issues and more.

APA Books E-Collections

Annual collections of APA-published scholarly and professional books

Purchase individual copyright year collections of leading scholarly and professional American Psychological Association books. They provide in-depth coverage of sub-fields in psychology and related disciplines. Available from 2001 onwards and delivered exclusively on the APA PsycNET® platform.

www.chest.ac.uk/agreements/apa-ebooks

MedPsyc SocSci Perpetual

APA Handbooks in Psychology

Authoritative reference series detailing a wide variety of psychology sub-disciplines

These reference books provide a one-stop shop of essential knowledge and in-depth analyses of a variety of sub-fields within psychology. Three new titles were added in 2019: the APA Handbooks of Psychopharmacology, Sport and Exercise Psychology, and Contemporary Family Psychology. Another is scheduled in 2020.

www.chest.ac.uk/agreements/apa-ebooks

MedPsyc SocSci Perpetual

APA PsycARTICLES

Delve into the science of psychology and behavioural research

PsycARTICLES contains the full text of some of the most highly cited publications in psychology, including all APA journals, the Canadian Psychological Association, and the Hogrefe Publishing Group. With current coverage of 110 journals and historical content, in some cases dating back to 1894, the collection provides access to a wide range of research in the field.

www.chest.ac.uk/agreements/apa-psycarticles

MedPsyc SocSci Subscription

APA PsycBOOKS

Current and comprehensive library of APA-published scholarly and professional books

A subscription to PsycBOOKS offers access to the current library of APA published scholarly books, including all the reference titles in the APA Handbooks in Psychology® Series. Along with the expansive backfile that includes classic works dating back to the 17th century it provides an important research tool for the behavioural sciences.

33 new titles were added in 2019 and 36 scheduled in 2020.

www.chest.ac.uk/agreements/apa-psycbooks

MedPsyc SocSci Subscription



American Psychological Association



APA PsycEXTRA

New developments and research in psychology and the behavioral sciences

PsycEXTRA provides hard-to-find content from authoritative sources, beyond traditional peer-reviewed research materials; conference proceedings, newsletters, reports, patient-oriented factsheets and brochures, magazines, monographs, standards and guidelines, and more. PsycEXTRA complements PsycINFO and there is no overlap of records.

www.chest.ac.uk/agreements/apa-psycextra

MedPsyc Research SocSci Subscription

APA PsycINFO

Explore the breadth of research in the behavioural and social sciences

PsycINFO is a world-class resource for abstracts and citations of behavioural and social science research.

Focused on the interdisciplinary aspects of the behavioural and social science research and literature, PsycINFO is a perfect resource for locating scholarly research findings in psychology and related fields across a host of academic disciplines, from the historical to the cutting edge.

www.chest.ac.uk/agreements/apa-psycinfo

MedPsyc Research SocSci Subscription

APA PsycTESTS

A one-of-a-kind resource for psychological measurement and instrumentation tools

PsycTESTS is an extensive collection of psychological measures, scales, surveys, and other instruments essential to the research needs of professionals, students, and educators across the behavioural and social sciences. It provides an essential resource for researchers looking to conduct, create, or measure research in multiple fields of study.

www.chest.ac.uk/agreements/apa-psyc-tests

MedPsyc Research SocSci Subscription

APA PsycTHERAPY

Streaming videos for teaching and learning psychotherapy techniques

PsycTHERAPY provides academics, researchers and students the opportunity to observe candid psychotherapy videos. This proven counselling training method is an invaluable tool to remain abreast of the latest psychotherapy techniques.

Therapists cover more than 100 approaches, such as integrated behavioural health care, cognitive behaviour therapy, and acceptance and commitment therapy.

Available on the APA PsycNET and EBSCO platforms.

www.chest.ac.uk/agreements/apa-psyc-therapy

MedPsyc Research SocSci Subscription

Brill



Founded in 1683, Brill is a Dutch publishing house with a rich history and a strong international focus. Brill's publications focus on the humanities and social sciences, international law and selected areas in the sciences.

Brill E-Book Collections

Purchase collections of titles by subject and copyright year

The expanded e-Book collection offers multiple-purchase discounts. Many of the 2020 Collections, with subjects including Asian Studies, Classical Studies, History, Literature and Cultural Studies, and Social Sciences, are already released and are ready to order. You can also pre-order other 2020 collections now.

The eBooks are exclusively available from Brill.

www.chest.ac.uk/agreements/brill-ebooks

ArtsHum MedPsyc Research SocSci Perpetual

Brill Hague Academy Collected Courses Online

Nearly 100 years of scholarship of international law in French and English

Founded in 1923, The Hague Academy of International Law is a leading centre for teaching and research in public and private international law.

Experts from all over the world deliver courses and seminars to an international audience of young lawyers with a view to promote knowledge and contribute to the establishment of peace. The lectures are published in the Collected Course Online.

www.chest.ac.uk/agreements/brill-hacco

Bus Research Subscription Perpetual

Brill Online Reference Work and Databases

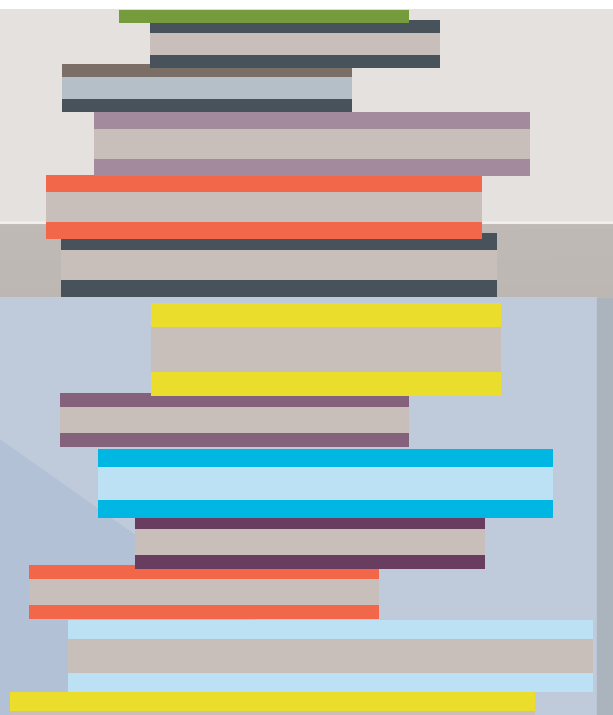
Subscriptions to prestigious reference works and primary source materials

Brill offers reference works and primary source materials, including prestigious publications such as the Encyclopedia of Islam, Brill's New Pauly. Packages include:

- Classical World Online Package comprising Pauly Online, Jacoby Online and Supplementum Epigraphicum Graecum
- Index Islamicus Online
- Encyclopaedia of Islam and Encyclopaedia of the Qur'an Online
- World Religion Database
- World Christian Database

www.chest.ac.uk/agreements/brill-online

ArtsHum Research Subscription



COBRA



Cobweb Information's range of factsheets, start-up guides and sector reports

The **Complete Business Reference Adviser**, offers reliable, practical content that explains regulations, trading issues, opportunities and developments in over 550 small business trades and sectors. The range of business start-up guides, regulatory factsheets, industry reports and updates, as well as a UK-wide directory of local business support schemes make it ideal for someone who is thinking of setting up their own small business.

COBRA is used in university and college libraries, careers services, enterprise centres, and in knowledge transfer activities.

www.chest.ac.uk/agreements/cobra

Bus Research Subscription

Commonwealth iLibrary



Insight and expertise to support member states

The Commonwealth Secretariat promotes peace, democracy, rule of law, human rights, good governance and social and economic development. They publish around 30 new titles on a range of topics each year. Find all their publications in a single repository that holds over 820 titles. Topics include globalisation and multilateral trade issues, export and enterprise development, education, gender, public service management and reform, law and human rights.

The Commonwealth iLibrary's wide ranging research and knowledge is appropriate to a variety of audiences.

.../agreements/commonwealthilibrary

Bus Research Subscription

Compendex and Ei Backfile



An holistic and global view of peer-reviewed engineering literature

Compendex, engineering bibliographic database with over 20 million records from 77 countries across 190 engineering disciplines, is indexed using the Engineering Index Thesaurus. Compendex covers these related areas:

- Applied Physics, including Optics
- Bioengineering and Biotechnology
- Food Science and Technology
- Materials Science
- Instrumentation, including Medical Devices
- Nanotechnology

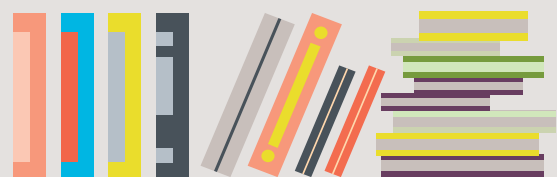
Engineering Index Backfile, a comprehensive, historical view of engineering developments and innovations described in literature from 1884-1969.

www.chest.ac.uk/agreements/ei-compindex

Research STEM Subscription Perpetual

“Chest staff are very knowledgeable and dedicated to the needs of their customers. Help and support is readily available and information about deals is clear and relevant.”

Claire Grace, Head of Content & Licensing, Library Services, The Open University



NEW

De Gruyter Databases



Specialised collections of primary sources, text collections, reference works, and bibliographies

The range of databases from de Gruyter:

Spark, an encyclopedia of chemistry, industrial chemistry, materials science and physics.

Enzymes Online covers a wide spectrum of topics relating to the function, analysis, and application of enzymes.

Energy Online covers energy topics as they relate to science, architecture, economics, and politics.

nano Online offers coverage of physics, chemistry and materials science at the Nanoscale.

IUPAC Standards Online from the International Union of Pure and Applied Chemistry.

www.chest.ac.uk/agreements/ei-compindex

Research STEM Subscription Perpetual Maintenance

Emerald

Emerald is a global publisher that champions new ideas that advance the research and practice of business and management and in applied fields including health and social care, education and engineering.

Access to Emerald content can be extended to education partners and alumni with optional licence extensions.

The following resources are available under subscription or to buy until 31 December 2020.

Coming soon from Emerald; Expert Briefings powered by Oxford Analytica. Expert Briefings are responses to macro-economic and geopolitical events, prepared for global political and business leaders to help them understand the implications. Check out the website and the Messenger for updates.

Emerald Alumni Toolkit

Help your alumni improve their performance and fast-track their career

The **Emerald Alumni Toolkit** is developed and curated by a team of experienced researchers, editors and learning professionals to support continued professional development.

It provides engaging and interactive resources in different formats to help improve performance, sharpen skills and provide support and advice on the business and personal challenges that your alumni will encounter every day.

www.chest.ac.uk/agreements/emerald-alumni-toolkit

Bus Subscription Alumni

Emerald Backfiles

A multidisciplinary collection from over 120 years of global research

Choose the entire Emerald Premier cross-disciplinary eJournal database or tailor your resources by picking specific collections - there are flexible options to suit your curriculum and every budget.

The backfiles offer insights into how thinking has changed on topics, world changing events, the progress of organisations and globalisation.

www.chest.ac.uk/agreements/emerald-backfiles

Bus MedPsc SocSci STEM Perpetual Alumni

Emerald Business Management and Economics eBooks

eBooks reflecting the latest emerging trends and fresh thinking

More than 1,600 titles in seven collections with subjects including accounting, marketing, HR, strategy, leisure and tourism, and more.

Access the archives and latest eBooks, monographs, edited collections, handbooks, professional texts and series titles in business management and economics.

Available as the full archive, five-year archives and the current year.

www.chest.ac.uk/agreements/emerald-bme

Bus Perpetual Alumni

Emerald eCase Collection

Global case materials to engage and inspire your students

A single, annual subscription to the Emerald eCase Collection provides unlimited access to a continuously developing digital library of more than 1,700 real-world case studies.

The collection features teaching material licensed from global case method advocates, that supports tailored discussion based on student experience, expectation and capability.

www.chest.ac.uk/agreements/emerald-ecases

Bus Subscription Alumni



Emerald



Emerald Emerging Market Case Studies

Authentic examples of organisational challenges within emerging markets

This peer-reviewed collection of case studies focusing on business decision making and management development throughout key global emerging markets provides a powerful teaching aid.

Each case is accompanied with teaching notes that have been compiled at some of the world's best business schools.

www.chest.ac.uk/agreements/emerald-emcs

Bus Perpetual Alumni

Emerald eJournal Subject Collections

Comprehensive coverage across key disciplines offering new perspectives

Universities and colleges can choose packages to fit their curriculum and budget selected from over 300 titles:

- Emerald Management eJournals Portfolio is divided over 9 management disciplines
- Four Emerald Subject Collections comprised of Education, Engineering, Health & Social Care and Library Studies.

[.../agreements/emerald-ejournals-for-he](http://www.chest.ac.uk/agreements/emerald-ejournals-for-he)

[.../agreements/emerald-ejournals-for-fe](http://www.chest.ac.uk/agreements/emerald-ejournals-for-fe)

Bus MedPsyc SocSci STEM Subscription Alumni

Emerald Social Sciences eBooks

Emerging trends and fresh thinking from leading academics and industry specialists

The Social Sciences portfolio delivers more than 900 eBooks packed with novel, cross-disciplinary research spanning the major topics of discussion in education and sociology.

The archives include ebooks, monographs, edited collections, handbooks, professional texts and series titles in Social Sciences.

Available as the full archive, five-year archives and the current year.

www.chest.ac.uk/agreements/emerald-social-sciences

SocSci Perpetual Alumni

Emerald Transport eBooks

Navigate the latest developments

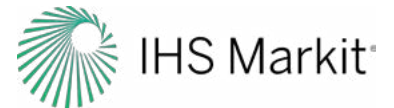
Emerald's Transport eBook Collection of 47 titles provides access to high quality, international research.

Research from leading experts spans a wide range of transport related disciplines, including modes of transport, transport safety, systems, logistics, transport planning and the environment.

www.chest.ac.uk/agreements/emerald-transport

STEM Perpetual Alumni

RENEWED



ESDU Validated Engineering Data

Prepare your engineering students with the latest tools, design methods and data

ESDU's methods, best practices, data and software tools that help solve complex Aerospace, Automotive, Mechanical, Structural and Process Engineering problems.

Representing the collective knowledge of hundreds of engineers, the data and information is often only available through ESDU.

Many major universities use ESDU data and software in teaching and graduate and postgraduate research projects.

www.chest.ac.uk/agreements/esdu

STEM Subscription

Euromonitor Passport



Data and insight on industries, economies and consumers worldwide

Offering internationally comparable market research Passport provides intelligence on the industry and economic landscape in more than 200 countries and territories

- **Students** gain experience using the same professional-level research database that successful companies rely on, increasing their employment prospects.
- **Academics and researchers** can leverage the intelligence for independent research projects and teaching across a range of disciplines.
- **Library staff** use the research to answer a broad range of enquiries.

Subscriptions can be extended to educational partners and wholly owned overseas campuses with optional licence extensions.

.../agreements/euromonitor-passport

Bus Subscription

NEW

F1000Prime and F1000Workspace

F1000

Solutions for how research is shared, used and reused

F1000Prime publishes literature recommendations of articles in biology, medicine, psychology and physics from a "faculty" of around 8,000 scientists and clinical researchers. The service covers 32 disciplines and around 3,700 journals.

F1000Workspace is an easy and intuitive way to discover, read, annotate, write and share scientific research. It assists users to organise their research; saving references on the go, add notes to web pages and PDFs, and work seamlessly across any computer, phone or tablet. Using shared projects collaborators can discuss and share new research more efficiently.

www.chest.ac.uk/agreements/f1000

Research STEM MedPsyc Subscription



The IET

The Institution of Engineering and Technology is a membership organisation. They provide a range of world-renowned publications and information services.

IET eBooks

NEW

Titles across a range of engineering and technology disciplines

The eBook collections cover an extensive range of subject areas from 1979 to the present day.

Cross-disciplinary collections of Front and Back lists from more than 600 titles are available as full-text or chapter-only downloads. In addition, there are subject collections covering these topics:

- Computing
- Control, Robotics & Sensors
- Electromagnetic Waves
- Energy Engineering
- Healthcare Technologies
- History of Technology
- Management of Technology
- Materials, Circuits & Devices
- Radar, Sonar & Navigation
- Sector Publications
- Security
- Telecommunications
- Transport

www.chest.ac.uk/agreements/iet-ebooks

Research STEM Perpetual

IET Inspec

More than 50 years of scientific discovery

IET Inspec is an interdisciplinary scientific and technical database containing over 18 million abstracts and specialised indexing of research literature.

Inspec focuses on four main subject areas:

- Physics
- Electrical engineering and electronics
- Computers and control
- Mechanical and production engineering.

Researchers use Inspec to alert them to new developments in their field, track new technology and products, search for patent novelty and analyse data by a wide variety of parameters. **Now also includes the highly-rated Inspec Analytics – see panel below.**

www.chest.ac.uk/agreements/inspec

Research STEM Subscription

IET Inspec Archive

Engineering breakthroughs from 1898 to 1968

The precursor to the Inspec database, this archive of the Science Abstracts series of journals complements Inspec.

Users can locate references to historic research or engineering breakthroughs from scientists and engineers such as Albert Einstein, Guglielmo Marconi, Max Planck, Ernest Rutherford and Marie Curie.

Much of the rich historic coverage of is very relevant to today's 'hot' topics such as: frugal innovation, fuel cells, regenerative braking, energy harvesting and wireless power transfer.

www.chest.ac.uk/agreements/inspec-archive

Research STEM Subscription Perpetual

IET Analytics

NEW

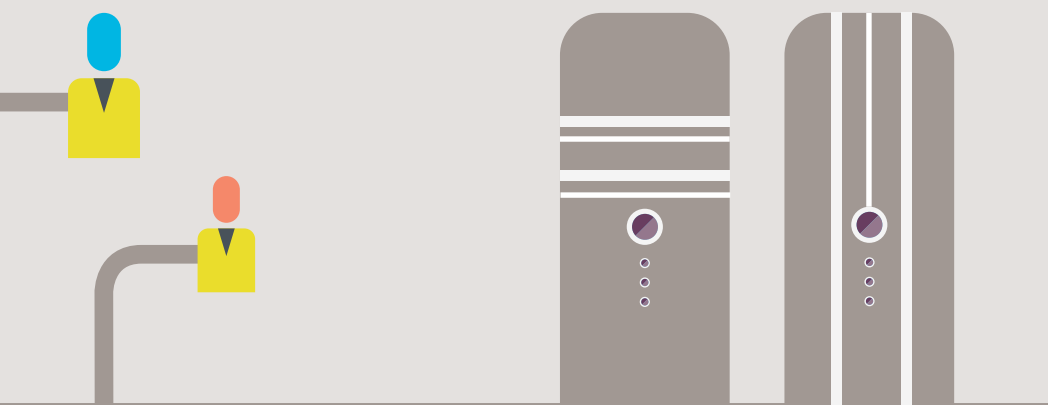
Now included as part of your Inspec

Inspec Analytics enables researchers to explore the interconnected data within Inspec to uncover trends and patterns across a wide range of physics and engineering disciplines at both local and global levels.

With these insights, researchers can set the direction for their research outputs and monitor their impact.

Winner: Best new product / service at The Charleston Advisor Eighteenth Annual Readers' Choice Awards:

"This is a wonderful analytics tool for multidisciplinary collaboration as well as those working in focused fields."





IGI Global

IGI Global is an international publisher of information science and technology research in 11 core subject areas including business and management, computer science and information technology, education, engineering, social sciences, medicine and healthcare, and more.

InfoSci eBooks

Emerging research across 350+ topics in 11 core subjects

InfoSci eBooks is a world-class database of over 5,300+ reference works, encyclopaedias, handbooks of research, and teaching cases focusing on innovative research and technological advancements.

The books are highly cited and currently recognised in prestigious indices such as Scopus and Web of Science.

Whole and individual subject collections are available by subscription or to buy.

www.chest.ac.uk/agreements/igi-global-ebooks

Bus MedPsc Research SocSci
STEM Subscription Perpetual

InfoSci eJournals

Information science and technology across all disciplines

InfoSci Journals database contains over 185 cutting-edge, interdisciplinary journals that have been managed since 1988. Covering emerging technology and innovative research trends, this research database is a strong investment for research-focused libraries.

The Journals are found in several prestigious indices, including Web of Science, Scopus, and Compendex.

Whole and individual subject collections are available.

www.chest.ac.uk/agreements/igi-global-journals

Bus Research SocSci STEM
Subscription Perpetual

IGI Global's Open Access (OA) Fee Waiver (Read and Publish) Initiative

For any library that invests in IGI Global's InfoSci-Books and/or InfoSci-Journals databases, IGI Global will match the library's investment with a fund of equal value to go toward subsidising the OA article processing charges (APCs) for their students, faculty, and staff at that institution when their work is submitted and accepted under OA into an IGI Global journal.

Isle of Man Map Data



Project licences for map and spatial data

The Isle of Man Government provides licences for academic projects to use their digital map data and spatial data.

In DXF or Esri compatible geodatabase formats, and other derived datasets, the data is free of charge, though users are required to declare the research or teaching project for which the data will be used.

www.chest.ac.uk/agreements/iom

FOC GIS

MarketLine



Company, industry, country and financial data

MarketLine is an interactive platform, providing access to a unique and exclusive mix of company, industry, country, city and financial data. It covers most major industries from aerospace and automotive to media, mining and textiles. News, financial deals, comment, and analyst insights complement this data.

- Market data and insights
- Competitor intelligence
- Macroeconomic indicators
- Real-time intelligence

www.chest.ac.uk/agreements/marketline

Bus Subscription

NEW

MarketLine Chartbooks

Visual analysis of global company, city, company and industry data

Exclusive to FE colleges.

- **Country Statistics** – an overview, analysis and peer comparisons for major countries, blocs, regions and economies.
- **City Statistics** – an instant view of key economics, demographics, employment, households, and education data for leading cities.
- **Company Statistics** – data, analysis and comparisons of the leading companies in major markets.
- **Industry Statistics** – overview, analysis and comparisons of top markets and industries.

[.../agreements/marketlinechartbooks](#)

Bus [Subscription](#)

RENEWED

New Scientist Online

Low cost subscriptions to this leading science and technology magazine

New Scientist is the world's most popular weekly science and technology magazine. It covers international news from a scientific standpoint, and asks the biggest-picture questions about life, the universe and what it means to be human.

Readers get access to current editions and the archive back to 1989.

"Extremely informative both for academics and people with no scientific background" – Reader, NPS survey, January 2016.

[www.chest.ac.uk/agreements/new-scientist](#)

STEM [Subscription](#)

Nielsen Bookdata Online

Comprehensive data for English-language titles published worldwide

BookData Online UK & Ireland and International are databases of books and related products.

As well as fast and efficient search and discovery of up to date, comprehensive and content-rich product information, this service also provides the facility to order from all UK book suppliers, track orders online, and obtain real-time price and stock information.

[www.chest.ac.uk/agreements/nielsen](#)

SysServ [Subscription](#)

OECD iLibrary

Wide ranging research and knowledge on international development from the OECD

The OECD iLibrary is the Organisation for Economic Co-operation and Development's library of books, papers and statistics plus analysis and data. It contains publications and datasets from other bodies such as the IEA, NEA, OECD Development Centre, PISA, and ITF.

All the content is presented so users can find - and cite - tables and databases as easily as articles or chapters.

The content from the OECD is widely used in universities and research organisations.

[www.chest.ac.uk/agreements/oecd](#)

Bus [Research](#) [STEM](#) [Subscription](#)

SciFinder

Research and discovery tool for delving into multiple STEM disciplines

SciFinder, from CAS, is a research discovery application that provides integrated access to the world's most comprehensive and authoritative source of references, substances and reactions in chemistry and related sciences. Many academic researchers rely on SciFinder to keep up to date on and leverage the latest advances in science.

This is a non-standard Chest Agreement – contact Chest Help for more information.

[www.chest.ac.uk/agreements/scifinder](#)

MedPsyc [Research](#) [STEM](#) [Subscription](#)

Online Resources

RENEWED

Springer Nature Lecture Notes



Latest developments in three research areas

The series cover:

- **Computer Science** - the latest results from all areas of computer science and information technology research, development, and education.
- **Mathematics** - new developments in all areas of mathematics and their applications.
- **Physics** - new developments in physics research and teaching presented in an accessible way.

Lecture Notes aim to summarise and communicate current knowledge at a high level.

The subject series are available individually.

[.../agreements/springer-nature-lecture-notes](https://www.chest.ac.uk/agreements/springer-nature-lecture-notes)

Research **STEM** **Subscription**

Sustainable Organisation Library



Sustainability, responsible business, ethics, corporate governance, development economics and the environment

The Sustainable Organization Library (SOL) contains more than 10,000 individually searchable chapters, case studies and journal papers drawn from over 800 book and journal volumes, published by the leading independent sustainability publisher, Greenleaf Publishing, and several partner organizations.

SOL gives instant access to leading thinkers on sustainability; hundreds of case studies on best practice from international organizations; and research to inspire the next generation of socially responsible leaders.

www.chest.ac.uk/agreements/sol

Bus **Perpetual**

Thieme Journals Backfiles



Latest advancements in medicine and chemistry

Thieme is an international medical and science publisher which has served health professionals and students for more than 125 years.

Purchase the backfiles of 30 titles in chemistry and medicine from Thieme's award winning journal collection. Thieme promotes the latest advancements in clinical practice, publishes the latest research findings, advocates medical education and is known for the high quality and educational nature of its books, journals, and electronic products.

www.chest.ac.uk/agreements/thieme

MedPsyc **STEM** **Perpetual**

United Nations iLibrary



UN Secretariat publications in an easily searchable research repository

The iLibrary is the comprehensive global search, discovery, and viewing source for content created by the United Nations.

It includes books, statistical databases, and other resources on international peace and security, human rights, gender issues, economic and social development, international trade, climate change, international law, governance, public health, transportation, and statistics.

www.chest.ac.uk/agreements/un-ilibrary

Bus **Research** **SocSci** **Subscription**

NEW

World Trade Organisation's iLibrary



The WTO's key research material on global trade in one place

Every year, the World Trade Organization publishes around 70 new titles on various trade issues. A wide range of topics are covered including:

- Agriculture and food safety
- Dispute settlement
- Economic research and trade policy analysis
- Environment
- Information technology and e-commerce
- Technical barriers to trade

www.chest.ac.uk/agreements/wtoilibrary

Bus **Research** **SocSci** **Subscription**

Find out more about Chest

For more background information, visit the FAQ page www.chest.ac.uk/frequently-asked-questions. You will find a wealth of information such as how we choose products for Chest Agreements, things that you need to know if you participate in an Agreement, the role of licence contacts, legal stuff such as the Chest Standard licences, what being a Chest Site Rep means, a section on jargon busting, and what you need to consider if you want to provide access to your partners.

How to order

All publicly funded Universities and Colleges of Further Education in the UK are eligible to subscribe to Chest Agreements. Other organisations, for example, universities and third-level colleges in Ireland, private universities and colleges and other training organisations, and not-for-profit organisations, can benefit, though this is usually at the discretion of the supplier. Contact help@chest.ac.uk if you would like to know if your organisation is eligible.

The first step to ordering is to register on the Chest website.

Why register?

- Once logged in you will be able to order online.
- Some content is only accessible once you are logged in.
- You won't need to enter your details next time.
- You can view details of the resources that your organisation is licensed for.
- You can administer your own account details and preferences.
- You can view suggestions that other people have made for new Chest Agreements, vote for them and suggest other products.

Who can register?

Members of staff at institutions and other organisations that are eligible to participate in Chest Agreements, and other people who hold an appropriate position at their organisation and are responsible for making decisions about purchasing online resources and software for use by their students and staff.

To find out more about registering see www.chest.ac.uk/registering-on-the-chest-website.

Ordering

The new order process outlined here www.chest.ac.uk/how-to-order. The precise steps vary depending on the Agreement.

The most efficient way is to order online. Alternatively, download a partially completed order form and fill in the rest of the details offline, or download a blank pdf order form, complete all the details offline, and return your form as an email attachment to Chest Help, help@chest.ac.uk, or by post to: Chest (a Jisc enterprise), 4 Portwall Lane, Bristol, BS1 6NB.

Collaboration

The success of Chest Agreements relies on collaboration between the academic community, suppliers and the Chest Team. Chest runs free to attend meetings, often in partnership with suppliers, collaborates with groups that represent the academic community such as the Academic Applications Forum, Alumni Library Forum, Business Librarians Association, National Acquisitions Group, sheriff, and the University Science and Technology Librarians Group. Chest is a member of Project COUNTER, and the UCISA Software Procurement Group.

You can find details of events here www.chest.ac.uk/events.

Being a Chest Representative

Each university, each college, each organisation, that is eligible to licence resources through Chest must nominate at least one Chest Rep (aka Site Contact). This is an important but not especially onerous role. These people are the first point of contact for Chest. There are two types of Rep – software and library specialists:

Software Contact

A Software Contact usually has a senior role in IT Services. This person needs a good understanding of software licensing and knowledge of the software licensed by their institution.

Online Resource (Data) Contact

This Online Resources Contact is typically a senior librarian, an authority on online resources and the requirements of their organisation. They should have a good understanding of licensing.

You can nominate more than one person for each role – this is quite usual to ensure cover for holidays and other things.

What is their role?

Site Reps are usually responsible for making decisions to purchase Chest licences and placing orders.

They receive the Chest Messenger newsletters and other information relating to Chest Agreements and events. It is their responsibility to circulate relevant news to their colleagues.

An important aspect of the role is to advise Chest about their institution's licence needs and if there are any licensing issues that are challenging their organisation; if we know about these things then we will do what we can to help.

Another is to review proposals for new and renewing Chest Agreements and send us any feedback.

On the Chest website

As Chest Site Rep, once registered, you will:

- have access to restricted content – this is commercially sensitive and should not be shared with third parties.
- be able to order online.
- view the status of any orders.
- view licence details of orders raised by yourself or colleagues.
- print details of your licences.
- approve other members of your organisation when they register on the Chest website. This will allow them to view restricted content and order.

You can:

- edit your personal contact information and preferences.
- change your password.
- manage users at your organisation;
- add users to attach to licences when you order.
- remove users if they leave or change jobs.
- upgrade another user to Chest Rep so that your organisation has more cover or if you need to resign as Chest Rep.

It's now easy to update contact information and preferences and help Chest to keep your records up to date.

We advise that you read the Chest Privacy Notice at www.chest.ac.uk/privacy-notice to learn how we respect your personal information.

In addition, please read the Chest Data Processing Agreement at www.chest.ac.uk/chest-data-processing-agreement which applies to universities, colleges and other organisations which are eligible to participate in Chest Agreements, and is required to ensure compliance with the GDPR Regulations.

Agreements A-Z

Agreement	Type	Purchase Type	Agreement End Date	Licence	Invoice source	Invoice Date	Page No.
Adobe ETLA	Software	Subscription	31/08/21	Adobe	Jisc	Varies	7
Adobe Linked VIP	Software	Subscription	Rolling	Adobe	n/a	n/a	7
Adobe Master CLP	Software	Perpetual	05/04/21	Adobe	n/a	n/a	7
Adobe Student ETLA	Software	Subscription	13/08/22	Adobe	Jisc	Varies	7
AMS Journals	Online Resource	Subscription	31/12/22	Chest	Jisc	01-Oct	17
AMS MathSciNet	Online Resource	Subscription	31/12/22	Chest	Jisc	01-Oct	17
AMS Memoirs	Online Resource	Perpetual	31/12/22	Chest	Jisc	n/a	17
APA Books E-Collections	Online Resource	Perpetual	31/07/20	APA	Jisc	1 May for access fee	18
APA Handbooks in Psychology	Online Resource	Perpetual	31/07/20	APA	Jisc	1 May for access fee	18
APA PsycARTICLES	Online Resource	Subscription	31/07/20	APA	Jisc	01-May	18
APA PsycBOOKS	Online Resource	Subscription	31/07/20	APA	Jisc	01-May	18
APA PsycEXTRA	Online Resource	Subscription	31/07/20	APA	Jisc	01-May	19
APA PsycINFO	Online Resource	Subscription	31/07/20	APA	Jisc	01-May	19
APA PsycTESTS	Online Resource	Subscription	31/07/20	APA	Jisc	01-May	19
APA PsycTHERAPY	Online Resource	Subscription	31/07/20	APA	Jisc	01-May	19
Brill E-Book Collections	Online Resource	Perpetual	31/12/21	Chest	Jisc	n/a	20
Brill Hague Academy Collected Courses Online	Online Resource	Subscription / Perpetual	31/12/21	Chest	Jisc	01-Oct	20
Brill Online Reference Works and Databases	Online Resource	Subscription / Perpetual	31/12/21	Chest	Jisc	01-Oct	20
COBRA	Online Resource	Subscription	31/12/20	Chest + special terms	Jisc	3 months before anniversary	21
Commonwealth iLibrary	Online Resource	Subscription	31/01/22	Chest + special terms	Jisc	01-Nov	21
Compendex and EI Backfile	Online Resource	Subscription / Perpetual	07/12/23	Chest	Jisc	08-Sep	21
De Gruyter Databases	Online Resource	Subscription / Perpetual	31/12/21	Chest	Jisc	01-Oct	21
DigitalEd	Software	Subscription	30/04/23	Chest	Jisc and Digital Education	1 month before anniversary date	8
Emerald Alumni Toolkit	Online Resource	Subscription	31/12/20	Chest	Jisc	01-Oct	22
Emerald Backfiles	Online Resource	Subscription	31/12/20	Chest	Jisc	01-Oct	22
Emerald Business Management and Economics eBooks	Online Resource	Perpetual	31/12/20	Chest	Jisc	n/a	22
Emerald eCase Collection	Online Resource	Subscription	31/12/20	Chest	Jisc	01-Oct	22
Emerald Emerging Market Case Studies	Online Resource	Subscription	31/12/20	Chest	Jisc	01-Oct	23
Emerald eJournal Subject Collections for FE	Online Resource	Subscription	31/12/20	Chest	Jisc	01-Oct	23
Emerald eJournal Subject Collections	Online Resource	Subscription	01/01/21	Chest	Jisc	02-Oct	23
Emerald Social Sciences eBooks	Online Resource	Perpetual	31/12/20	Chest	Jisc	n/a	23
Emerald Transport eBooks	Online Resource	Perpetual	31/12/20	Chest	Jisc	n/a	23
ENVI	Software	Subscription	30/06/21	Harris Geospatial + special terms	Jisc	3 months before anniversary date	8
ESDU	Online Resource / Software	Subscription	31/10/22	Chest + special terms	Jisc	01-Aug	8/24
Esri UK	Software	Subscription	31/07/20	Esri + special terms	Jisc	01-May	8

Agreement	Type	Purchase Type	Agreement End Date	Licence	Invoice source	Invoice Date	Page No.
Euromonitor Passport	Online Resource	Subscription	31/03/22	Chest + special terms	Jisc	01-Jan	24
F1000Prime and F1000Workspace	Other	Subscription	30/09/22	Chest	Jisc	3 months before anniversary	24
Hexagon Geospatial	Software	Subscription	31/07/21	Chest	Jisc	01-May	9
IET eBooks	Online Resource	Perpetual	31/08/21	Chest	Jisc	n/a	25
IET Inspec	Online Resource	Subscription / Perpetual	31/08/21	Chest	Jisc	01-Jun	25
IET Inspec Archive	Online Resource	Subscription / Perpetual	31/08/21	Chest	Jisc	01-Jun	25
IGI Global eBooks	Online Resource	Subscription / Perpetual	31/12/20	Chest	Jisc	01-Oct	26
IGI Global eJournals	Online Resource	Subscription / Perpetual	31/12/20	Chest	Jisc	01-Oct	26
Isle of Man Map Data	Online Resource	FOC	Rolling	Special	FOC	n/a	26
License Dashboard	Software	Subscription	31/12/21	Chest	Jisc	3 months before anniversary date	10
Maplesoft	Software	Subscription	30/04/23	Chest	Jisc and Maplesoft	1 month before anniversary date	10
MarketLine	Online Resource	Subscription	31/07/22	Chest + special terms	Jisc	01-May	26
MarketLine ChartBooks	Online Resource	Subscription	31/07/22	Chest + special terms	Jisc	01-May	27
Microsoft EES Qualified User	Software	Subscription	31/12/20	Microsoft	Jisc for participation fee only	In advance of anniversary	11
Microsoft Select Plus	Software	Subscription	31/10/19	Microsoft	n/a for Microsoft EES participants	n/a	11
MindGenius	Software	Subscription / Perpetual	Rolling	Chest	Jisc	3 months before anniversary date	12
NAG	Software	Subscription	31/07/20	Chest	Jisc	01-May	12
New Scientist Online	Online Resource	Subscription	30/09/20	Chest	Jisc	n/a	27
Nielsen BookData Online	Online Resource	Subscription	31/07/21	Chest	Jisc	01-May	27
OECD iLibrary	Online Resource	Subscription	31/01/22	Chest	Jisc	01-Nov	27
Open Text	Software	Subscription	31/07/21	Chest	Jisc	01-May	12
Prolifiko	Other	Purchase	30/09/22	Chest	Jisc	n/a	13
QSR NVivo	Software	Subscription	30/06/22	Chest + special terms	Jisc	3 months before anniversary date	14
QSR Nvivo Transcription	Software	Purchase	30/06/22	QSR	Jisc	n/a	14
SAS	Software	Subscription	31/07/20	SAS	Jisc	01-May	15
SciFinder	Online Resource	Subscription	30/09/22	CAS	CAS	n/a	27
Snow Software	Software	Subscription	31/03/20	Chest + special terms	Jisc	n/a	15
Springer Lecture Notes Series	Online Resource	Subscription / Perpetual	31/12/20	Chest	Jisc	n/a	28
Sustainable Organisation Library	Online Resource	Perpetual	31/12/21	Chest	Jisc	n/a	28
TermSet	Software	Subscription	31/01/21	Chest	Jisc	3 months before anniversary date	15
Thieme Journals Backfile	Online Resource	Perpetual	28/02/22	Chest	Jisc	n/a	28
United Nations iLibrary	Online Resource	Subscription	31/01/22	Chest	Jisc	01-Nov	28
World Trade Organisation iLibrary	Online Resource	Subscription	30/04/22	Chest + special terms	Jisc	01-Feb	28



About Chest

Chest is a Jisc enterprise. The Team at Chest negotiate preferential licence agreements for software and online resources for the academic sector.

Get in touch

Tel: +44(0)300 121 0878

Email: help@chest.ac.uk

Postal address: **Chest,
4 Portwall Lane, Bristol, BS1 6NB**

Twitter: [@ChestAgreements](https://twitter.com/ChestAgreements)

www.chest.ac.uk

Jisc is a company limited by guarantee, registered in England (company number 5747339), and a registered charity (charity number 1149740), whose registered office is 4 Portwall Lane, Bristol, BS1 6NB. T: 0203 697 5860.

VAT No: GB 197 0632 86. OpenAthens and Chest are Jisc enterprises operating from 4 Portwall Lane, Bristol, BS1 6NB.