



Maplesoft 2023

Maplesoft

Available to purchase until 30/04/2028

This agreement provides a site licence for the Maplesoft product family of advanced mathematical and analytical software. Using Maple's mathematical computation engine with integrated numerics and symbolics users can solve mathematical problems and create technical applications.

Key Facts

Benefits

- 3 year licence with fixed pricing
- Full range of Maplesoft products and add-ons
- Price banding based on institution size
- Remote access with student distribution extensions
- Overseas Campus options
- Annual opt out without penalty included for Maple Learn add-on by default
- Access from personal devices included for Maple Learn add-on by default

Important Dates

Agreement start: 1 May 2023

Agreement end: 30 April 2028

Subsequent invoice date: 1 month in advance of the licence anniversary date

Commitment Period

Institutions may participate at any time during the 5 year period; however, they will be bound by the terms and conditions, including payments for 3 years from their enrolment.

Licence Type

Site licence

There is the option to purchase Student and Staff Distribution/Virtualisation Extensions which allow students and staff to access the software on their personal computers, either by local installation or via virtualisation/remote access technology.

Eligible Institutions

This Agreement is available to Institutions of Higher and Further Education and Research Councils in the United Kingdom, and to Higher and Further Education Institutions (Third Level Colleges) in the Republic of Ireland.

Background Information

This is a renewal of an agreement first negotiated in 2008.

Product Information

Supplier Details

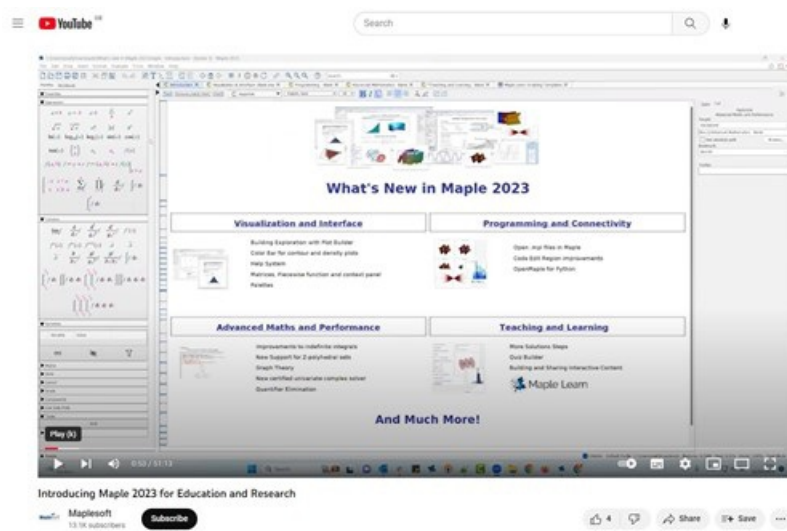
Licensors: Waterloo Maple Inc, acting through its Trading Division “Maplesoft”, an Ontario, Canada based company with offices at 615 Kumpf Drive, Waterloo, ON, N2V 1K8, Canada.

Product Description

- **Maple** - mathematics software tool providing a mathematical computation engine with integrated numerics and symbolics. Thousands of mathematical functions, hundreds of 2-D and 3-D plotting routines, and professional publishing tools. The Maple site licence also includes MapleNet. In addition Teaching Calculus with Maple and Maple Player are available free of charge via the MapleSoft website and Maple Player for iPad is available via the Apple App store. Maple Global Optimization Toolbox is also available as an optional product (pricing shall be provided by Maplesoft upon request).
- **Maple Flow** - an all-new whiteboard-style environment that allows engineers to easily brainstorm, develop, and document their design calculations. Specifically targeted at the simple to mid-range mathematics that make up the majority of engineering analysis, Maple Flow gives users a scratchpad-style environment that automatically keeps calculations live as they refine, reposition, and develop their work. For more information, watch the [Introducing Maple Flow](#) recorded webinar.
- **Maple Learn** - Maplesoft's online tool for teaching and learning mathematics that puts all the visualisation, solving tools, and interactivity you want at your fingertips, while also giving you the flexibility to work through steps like you would on paper. To see some of what Maple Learn can do, explore the [Maple Learn Example Gallery](#).
- **MapleSim** - an advanced system-level modelling and simulation tool that applies modern techniques to dramatically reduce model development time, provide greater insight into system behaviour, and produce fast, high-fidelity simulations. With MapleSim, educators have an industry-proven tool to help bridge the gap between theory and practice, engaging students with complex, real-world examples and preparing them for the challenges they will face in industry. The site licence also includes MapleSim Connector, MapleSim Control Design Toolbox and MapleSim Hydraulics Library from Modelon. MapleSim Battery Library, MapleSim CAD Toolbox and MapleSim Heat Transfer Library from CYBERNET are also available as optional products (pricing shall be provided by Maplesoft upon request).
- **Overseas Campus Options:** Expand your Maplesoft Chest licence to cover on-site use at your overseas campuses. One licence is required for each main product to be covered overseas. Prices are based on Home Campus size.
- **Student and Staff Distribution/Virtualisation Extension Options:** Allow institutions to do any and all of the following:
 - Distribution: You can distribute copies of the software to students and staff to install and use on their own, personally-owned computers. An internet connection is required to activate the software, but after that, the software can be used even when the user is off-line.
 - Virtualisation: You can deploy the software for home use by students and staff via remote access to institutionally-owned and controlled file servers, hosted server software servers, virtual desktops or virtualisation technologies.

Maple 2023

Click on the image below to watch the recording of the 'Introducing Maple 2023 for Education and Research' webinar held on 18 April 2023.



Maple Flow 2023

Click on the image below to watch the recording of the 'What's New in Maple Flow 2023' webinar held on 22 June 2023.



Service and Support

Trials

Click on the following links to access a free 15 day trial:

- [Maple Trial](#)
- [Maple Flow Trial](#)
- [Maple Learn Trial](#)
- [MapleSim Trial](#)

Product Documentation

Documentation is provided as PDFs and may be downloaded from the [Maplesoft Documentation Center](#).

Training and Training Materials

Free on-line training is available from [Maplesoft Training](#). In addition, a huge range of resource material is available on the [Maplesoft Welcome Center](#).

This agreement does not include the provision of training and training materials other than the built-in examples. Group training is available

from Maplesoft at normal rates.

Technical Support

Maplesoft will provide telephone advice and support to the nominated Technical and Deputy Technical Contacts at Licensed Institutions during normal business hours. Maplesoft support can be contacted at:

Phone: 01223 828989

Email: support@maplesoft.com

Supplier Web Address

Supplier home page: <https://www.maplesoft.com>

System Releases, New Versions and Functionality:

New releases, versions and functionality are included.

Platforms

Platform availability and system requirements are available here: www.maplesoft.com/products/system_requirements.aspx

Method of Delivery of Product

Electronic download

Maplesoft's Privacy Policy

<https://www.maplesoft.com/privacy>

Useful Resources

Maple Conference 2023 – Now Available On-Demand

Missed out on this year's Maple Conference? Now you can watch all the sessions on-demand, including a keynote from Dr. Tom Crawford of Oxford University on Using Pokémon (or Your Favourite Video Game) as a Teaching Tool, plus 40+ presentations and contributed talks from the Maple Community.

Click below to watch now



Resources for Instructors & Students

- [Teacher Resource Center](#)
- [Student Help Center](#)
- [Remote Learning Resources](#)
- [Exploring Engineering Fundamentals](#)
- [Teaching Concepts with Maple](#)
- [Recorded Webinars](#)

Using Maple Beyond the Maths Department

- **Physics**
- **Computer Science**
- **Statistics**
- **Data Science**
- **Life Sciences**
- **Finance**
- **Engineering**

Case Studies from UK Universities

Maple the ideal vehicle for algebra students at Bath University

Maplesoft's mathematics software, Maple, is being used at Bath University to provide a framework for the teaching of complex mathematics problem solving and for students to complete course work and assessment. Read more [here](#).

Maplesoft presents Awards of Excellence to two University of Birmingham Students

The scholarships provide monetary assistance for 3 years to each student for their graduate studies. They were selected from a group of students that was instrumental in encouraging and contributing to the use of technology in various undergraduate courses at the University. [Read the press release](#).

Advanced teaching benefits with control hardware and modeling software - University of Bristol

Use of a Quanser design control system is challenging students at Bristol University to look beyond the immediate project confines to find new solutions, whilst MapleSim modeling software is aiding postgraduate students in the development of robotic systems. Read on [here](#).

Experiences with Maple at the University of Derby

In this [short video](#), Dr. Ovidiu Bagdasar, Associate Professor in Mathematics at the School of Computing and Engineering, University of Derby, discusses his experiences with Maple, identifying areas in which he particularly finds it useful, including computer-grading, student engineering projects, and book authoring.

The University of Manchester Uses MapleSim in Robotics and Control Systems Courses

The Challenge: A professor at the University of Manchester was seeking the best modeling and simulation software solution to help students in his Robotics and Control Systems courses visualise the concepts they were learning. [Learn more...](#)

Terms and Conditions

Licensor: Waterloo Maple Inc, acting through its Trading Division "Maplesoft", an Ontario, Canada based company with offices at 615 Kumpf Drive, Waterloo, ON, N2V 1K8, Canada.

The Chest Order, together with the Licence Terms and Conditions, and any exceptions listed below, create a legally binding contract between your institution, organisation or company and the Licensor. Therefore please read the terms and conditions carefully and only submit a Chest Order if its terms and conditions are acceptable to your institution, organisation or company and you have the authority to make the financial commitment shown.

Licence Type

This Site licence is subject to the terms and conditions for the [Standard Chest Licence for Software \(June 2011\)](#).

Copying of the Software is allowed in accordance with the terms and conditions for the Standard Chest Licence for Software.

Payment Terms

On receipt of a completed order, Sites will be invoiced for the first year of their licence. For each subsequent year, Sites will be invoiced 1 month in advance of the anniversary date of their licence.

There is monthly pro-rata charging for Sites which become licensed for add-on products partway through a licence year.

There are two fees associated with this agreement (**this requires two Purchase Orders**):

- **Chest Fee** - Jisc will invoice you for this fee, a Purchase Order should be made out to Jisc Services Ltd, 4 Portwall Lane, Bristol, BS1 6NB. Chest is an Enterprise of Jisc.
- **Product Fee** - Maplesoft will invoice you for this fee, a Purchase Order should be made out to Maplesoft Europe Ltd., The Officers' Mess, Royston Road, Duxford, Cambridgeshire CB22 4QH.

All terms contained in a PO are expressly rejected and do not form part of the Licence or vary the Licence terms in any way.

Sites may, if they wish, pay a single charge to Maplesoft to cover their commitment period (3 years). Please advise [Chest Help](#) if you would like to do this.

Payments are due within 30 days of invoice dates; recipients of late payments are entitled to interest in accordance with **UK statutory provisions**.

Termination Clauses

For the Maple Learn add-on, Licensees may remove this product annually by giving notice not later than 2 months preceding the next subscription year.

At the end of the agreement period sites must remove Maple, along with any add-on products, from their systems.

Location and Use Permissions

The product(s) may be used by any Authorised User of the Licensee for Educational Purposes which includes the administration and management of the licensee's educational and research operations. These permissions are described in the terms and conditions for the Standard Chest Licence for Software.

Students	Yes
Academic Staff	Yes
Non-Academic Staff	Yes
Administration and management	Yes
Staff home use rights	No*
Student home use rights	No*
Installation on Hosted Servers / Virtualisation	Yes
Overseas Campus use	No**

With the exception of the Maple Learn add-on, which includes full home use provision, this Licence Agreement includes home use of the Software for 100 lecturers only. **Student and other staff home use of the Software is not included, unless the relevant Student & Staff Distribution/Virtualisation Extension has been purchased by the Licensee.*

***Overseas Campuses may use the Software only if they purchase the relevant Overseas Campus option. See the Products and Pricing tab for more information.*

Hosted Servers / Virtualisation

Other than for the exceptions listed above, this Licence Agreement excludes home use of the Software on personal computers so hosted installations, virtual desktops or virtualisation technologies cannot allow home use, unless the relevant Student & Staff Distribution/Virtualisation Extension has been purchased by the Licensee.

File Servers: You may install the Software on computer file server(s) within your internal network for use of the Software initiated by an individual from a computer within the same internal network only (that is, not VPN or remotely accessible). You cannot install or access (either directly or through commands, data or instructions) the Software from or to a computer that is not part of your internal network. Operations not initiated by an individual user (for example, automated server processing) are not allowed.

Hosted Server / Virtualisation Software: For example, Citrix, Remote Desktop/Terminal Services, AppsAnywhere etc. The Software may be

installed and used on a hosted server software server, virtual desktop or via a virtualisation technology, all intended for direct usage by users (no automated, programmatic, or scripted usage), providing the users are using the Software on a Licensee-owned or operated computer.

Personal Licences of Maple

Maple can be accessed from personal computers by students, either by local installation or via virtualisation / remote access technology, only if the **Maple & MapleSim Student and Staff Distribution/Virtualisation Extension** has been purchased.

If the Maple & MapleSim Student and Staff Distribution/Virtualisation Extension has not been purchased then students may purchase a Personal Licence for £87 (excluding delivery and VAT) directly from Maplesoft.

Academic staff can apply for a free home use licence for Maple and the Maple Toolboxes by applying to Maplesoft who will issue a single user Purchase Code.

Products and Pricing

Licence Term

Institutions commit for 3 years from when they start their licence. Pricing is in UK Pounds (£s) and excludes VAT which shall apply at the appropriate rate.

There are two fees associated with this agreement:

- **Chest Fee** - there are no price bands and **Jisc will invoice you for this fee**
- **Product Fee** - pricing is banded and **Maplesoft will invoice you for this fee**

In the UK prices are based on the size of institutions using **Jisc Bands**:

Site Size	Jisc Band
Large	1-4 and all Research Councils
Medium	5A, 5B, 6
Small	7-8
Very Small	9-10
Associate Sites	Variable on request

In the Republic of Ireland institutions, who do not have a Jisc Band allocated, have been placed in similar bands based on their full time equivalent student numbers. See **Ireland Price Bands** for a list of all Irish HE institutions.

Payment terms are shown on the Terms and Conditions Tab.

How to Order

Making a selection in the pricing tables will pass through to the online order form when you click on **Order now** (having logged in to the Chest website).

Please select both the appropriate Chest Fee and the Maplesoft product(s) you require when you order. Please also have your 2 Purchase Order numbers to hand, one made out to Jisc and one made out to Maplesoft, as these will be required as part of the online order process.

Note that, if you are ordering add-on products partway through a licence year, you only need to raise a Purchase Order made out to Maplesoft (there is no additional Chest Fee).

If you have any questions, please contact **Chest Help**.

Chest Fee

Product	Term	Price per year
Chest Fee Annual Payments	3 Years	£300
Chest Fee Upfront Single Payment	N/A	£810

Core Products

Product	Term	Band	Price per year
Maple	3 Years	Large	£9,062
Maple	3 Years	Medium	£8,412
Maple	3 Years	Small	£6,331
Maple	3 Years	Very Small	£4,531
Maple Flow	3 Years	Large	£9,062
Maple Flow	3 Years	Medium	£8,412
Maple Flow	3 Years	Small	£6,331
Maple Flow	3 Years	Very Small	£4,531

Add-on Products

Use the filters, where necessary, to reduce the length of the list.

Product	Term	Band	Price per year
Maple	3 Years	Large	£2,726
Maple	3 Years	Medium	£2,507
Maple	3 Years	Small	£1,892
Maple	3 Years	Very Small	£1,363
Maple Flow	3 Years	Large	£2,726
Maple Flow	3 Years	Medium	£2,507
Maple Flow	3 Years	Small	£1,892
Maple Flow	3 Years	Very Small	£1,363
Maple Learn	3 Years	All	£600
MapleSim	3 Years	Large	£9,062
MapleSim	3 Years	Medium	£8,412
MapleSim	3 Years	Small	£6,331
MapleSim	3 Years	Very Small	£4,531
Maple Overseas Campus	3 Years	Large	£3,627
Maple Overseas Campus	3 Years	Medium	£3,366
Maple Overseas Campus	3 Years	Small	£2,535

Product	Term	Band	Price per year
Maple Overseas Campus	3 Years	Very Small	£1,814
Maple Flow Overseas Campus	3 Years	Large	£3,627
Maple Flow Overseas Campus	3 Years	Medium	£3,366
Maple Flow Overseas Campus	3 Years	Small	£2,535
Maple Flow Overseas Campus	3 Years	Very Small	£1,814
MapleSim Overseas Campus	3 Years	Large	£3,627
MapleSim Overseas Campus	3 Years	Medium	£3,366
MapleSim Overseas Campus	3 Years	Small	£2,535
MapleSim Overseas Campus	3 Years	Very Small	£1,814
Maple & MapleSim Student and Staff Distribution/Virtualisation Extension	3 Years	Large	£2,726
Maple & MapleSim Student and Staff Distribution/Virtualisation Extension	3 Years	Medium	£2,507
Maple & MapleSim Student and Staff Distribution/Virtualisation Extension	3 Years	Small	£1,892
Maple & MapleSim Student and Staff Distribution/Virtualisation Extension	3 Years	Very Small	£1,363
Maple Flow Student and Staff Distribution/Virtualisation Extension	3 Years	Large	£2,726
Maple Flow Student and Staff Distribution/Virtualisation Extension	3 Years	Medium	£2,507
Maple Flow Student and Staff Distribution/Virtualisation Extension	3 Years	Small	£1,892
Maple Flow Student and Staff Distribution/Virtualisation Extension	3 Years	Very Small	£1,363